

FIELDKING

Compact Model Disc Harrow



➤ [Operator Manual](#) ➤ [Service Manual](#) ➤ [Part Catalogue](#)

CONGRATULATIONS!

You have invested in one of the best implements of its type in the market today.

The care you give your “FIELDKING” implement will greatly determine your satisfaction with its performance and its service life. A careful study of this manual will give you a thorough understanding of your new implement before operating.

If your manual is lost or destroyed, “FIELDKING” will be glad to provide you a new copy. Visit to nearest dealership & get a copy. Most of our manuals can also be downloaded from our website at www.fieldking.com.

As an authorized “FIELDKING” dealer, we stock genuine “FIELDKING” parts which are manufactured with the same precision and skill as our original equipment. Our trained service persons are well informed on methods required to service “FIELDKING” equipments and are ready to help you.

Should you require additional information or assistance, please contact us.

YOUR AUTHORIZED

FIELDKING DEALER

BECAUSE “FIELDKING” MAINTAINS AN ONGOING PROGRAMME OF PRODUCT IMPROVEMENT, WE RESERVE THE RIGHT TO MAKE IMPROVEMENTS IN DESIGN OR CHANGES IN SPECIFICATION WITHOUT INCURRING ANY OBLIGATION TO INSTALL THEM ON UNITS PREVIOUSLY SOLD. BECAUSE OF THE POSSIBILITY THAT SOME PHOTOGRAPHS IN THIS MANUAL WERE TAKEN OF PROTOTYPE MODELS, PRODUCTION MODELS MAY VARY IN SOME DETAIL. IN ADDITION, SOME PHOTOGRAPHS MAY SHOW SHIELDS REMOVED FOR THE PURPOSE OF CLARITY. NEVER OPERATE THIS IMPLEMENT WITHOUT ALL SHIELDS IN PLACE.

TO THE PURCHASER

This manual contains valuable information about your new “FIELDKING” compact model disc harrow. It has been carefully prepared to give you helpful suggestions for operating, adjusting, servicing and ordering spare parts.

Keep this manual in a convenient place for quick and easy reference. Study it carefully. You have purchased a dependable and sturdy compact model disc harrow but only by proper care and operation you can expect to receive the service and long life designed and built into it.

Sometime in the future your compact model disc harrow may need new parts to replace those that are worn or broken. If so, go to your dealer and provide him with equipment’s detail like model and part number.

CUSTOMER INFORMATION

Name _____

Purchased From _____

Date of Purchase _____

Model No. _____

Serial No. _____

PURCHASER / OPERATOR'S RESPONSIBILITY

1. Read and understand the information contained in this manual.
2. Operate, lubricate, assemble and maintain the equipment in accordance with all instructions and safety procedures in this manual.
3. Inspect the equipment and replace or repair any parts that are damaged or worn out which under continued operation would cause damage, wear to other parts, or cause a safety hazard.
4. Return the equipment or parts to the authorized "FIELDKING" dealer from where it was purchased for service or replacement of defective parts that are covered by warranty. (The "FIELDKING" Factory may inspect equipment or parts before warranty claims are honored.)
5. All costs incurred by the dealer for traveling to or transporting the equipment for warranty inspection and claims will be borne by the customer.

INDEX

1. TECHNICAL DATA

- 1.1 Introduction
- 1.2 Warranty
- 1.3 When the warranty becomes void
- 1.4 Warning

2. USAGE INSTRUCTIONS

- 2.1 Before Use & Adjustments
- 2.2 Attaching Harrow to the tractor
- 2.3 Warning for driver
- 2.4 Safety

3. MAINTENANCE

- 3.1 Maintenance Instructions
- 3.2 Storage of machine after work
- 3.3 Lubrication
- 3.4 Instructions for driver

4. OPERATIONAL GUIDELINES FOR HARROW

5. TROUBLE SHOOTING CHART

6. FIGURES & CODES FOR THE OPERATOR/DRIVER

1. TECHNICAL DATA

1.1 INTRODUCTION

This handbook contains the use and maintenance instructions with a list of the spare parts of the Disc Harrow.

This Disc harrow is equipped with heavy-duty square pipe box frame specially designed for harrowing / land preparation of rough soil (Secondary finer operation).

Regular and satisfactory operation together with economic and long lasting use of the implement depends on the compliance with instructions given in this handbook.

Compliance with the instructions in this handbook is also important since manufacturer declines all and every responsibility for damage to persons or property caused by negligence and failure to comply with these instructions.

1.2 WARRANTY

When the machine is delivered, check that it has not been subjected to damage during transport and that the accessories are in a perfect condition and complete.

Any claims following the receipt of damaged goods shall be presented in writing within 8 days from the receipt of the goods.

The purchaser may only make the claims under warranty when he has complied with the warranty conditions in the supply contract.

1.3 WHEN THE WARRANTY BECOMES VOID

Besides the cases specified in the supply agreement, the warranty shall in any case become void. When the implement has been used beyond the specified power limit like (Tractor Horse Power) When repairs made by the customer without authorization from the manufacturer or owing to installation of spurious spare parts, the machine is subjected to variations and the damage can be ascribed to these variations. When the user has failed to comply with the instructions in this handbook. If the implement is used in very hard/stony soil no warranty of discs will be given. No warranty will be given if the service and greasing is not done on time.

1.4 WARNING

Thoroughly read the instruction manual before proceeding with the various operations.

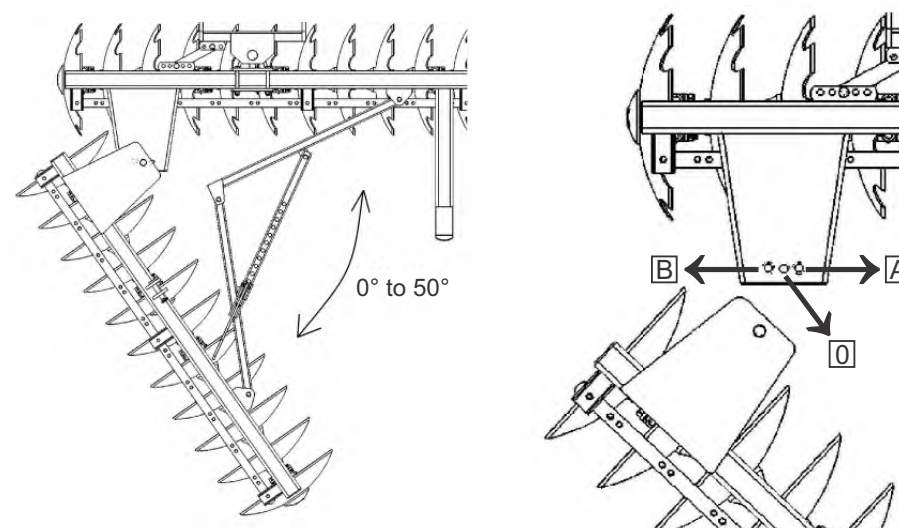
Maintain the harrow as per the instructions of this handbook to be entitled for warranty.

2. USAGE INSTRUCTIONS

2.1 ADJUSTMENTS BEFORE USE

1. Before mounting of disc harrow make sure that all nuts & bolts are properly secured.
2. Also determine soil and trash conditions of the field and make the preliminary adjustments. e.g.

a) Disc gang angle & width of cut adjustment



Disc gang angle adjustment 0° to 50°

Cutting width 0 to A increasing
Cutting width 0 to B decreasing

Fig. 2.1 (a)

Gang angle (Angle between two gangs) ranges from 0° to 50° . The angle can be increased for better penetration in dry soil while it should be reduced to avoid clogging in wet soil as shown in fig. 2.1(a)

b) Disc harrow offset adjustment

Disc harrow can be offset by shifting locking position of drawbar as shown in fig. 2.1(b)

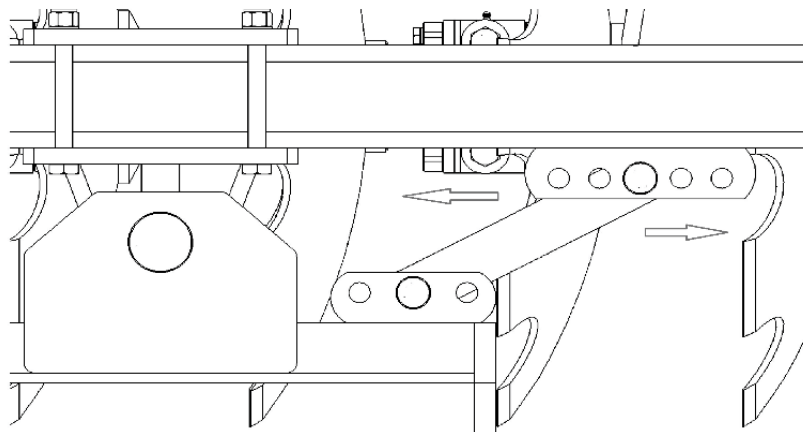


Fig. 2.1(b)

c) Disc harrow leveling

To eliminate uneven penetration and side draft, leveling is done by means of top link. While tractor pulls to right the rear gang should be lowered a little. When the tractor pulls to the left the rear gang should be raised.

d) Scraper adjustment

The scraper can be adjusted by loosening the bolts at the scrapers clamp.

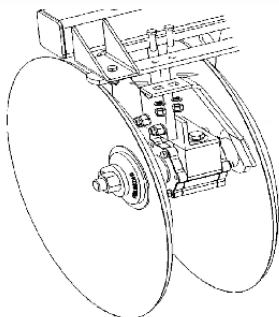


Fig. 2.1(d)

e) Depth control

The depth can be controlled by increasing or decreasing the gang angle of the implement.

f) Drawbar angle adjustment

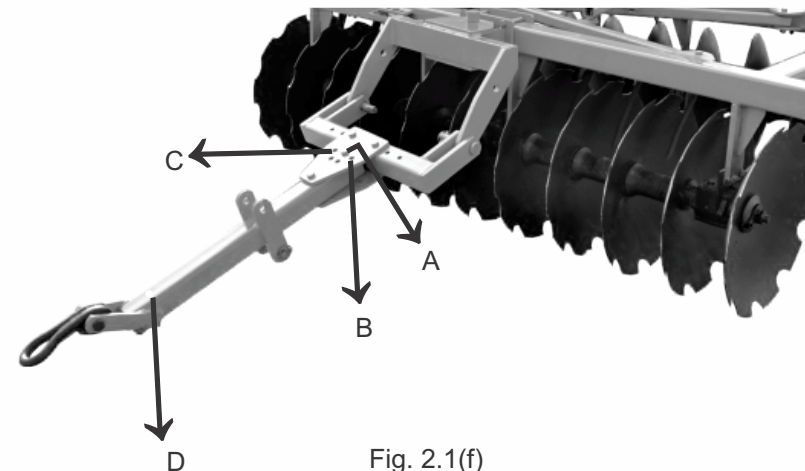


Fig. 2.1(f)

1. For medium hard soil, the drawbar can be utilized in the central position (A) of upper and lower plates.
2. The hole in the upper and lower plates are used to change the working angle of the front disc gang carrier.
3. The hole (B) is used for increasing penetration & hole (C) is used for decreasing penetration.
4. Hole (D) is used for tractor hitching point.

g) Drawbar vertical adjustment

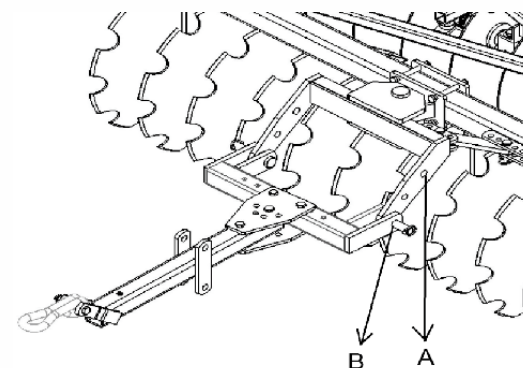


Fig. 2.1(g)

1. The centre joint assembly frame have two holes for vertical adjustment of drawbar, this assembly is used for better fit in different tractor models.
2. This adjustment also slightly changes the depth of cut. Choose the hole that better fits your tractor drawbar. The upper hole (A) allows a deeper penetration than the lower (B) hole of the centre joint assembly frame.

h) Maneuver direction

Never maneuver to the right hand side, because the angle formed by the disc angle, transmits great effort to the implement, overloading mainly the pulling components i.e. offset bar, drawbar etc.

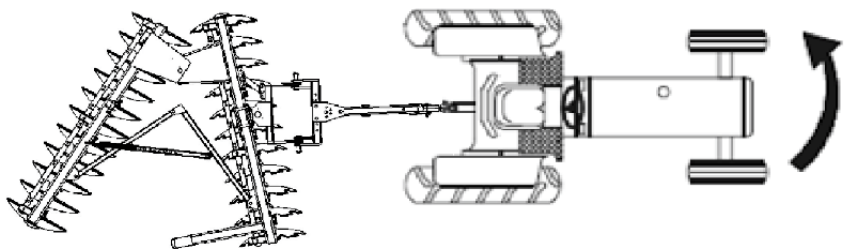


Fig. 2.1(h)

I) Tyre attachment assembly

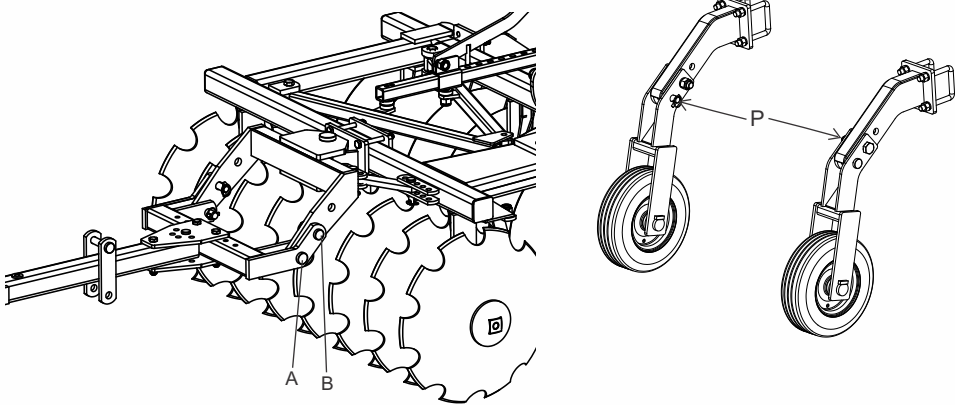


Fig. 2.1(i)

1. During transportation drawbar should be locked at point (A, B) and tyre assembly at point (P) with the help of pin.

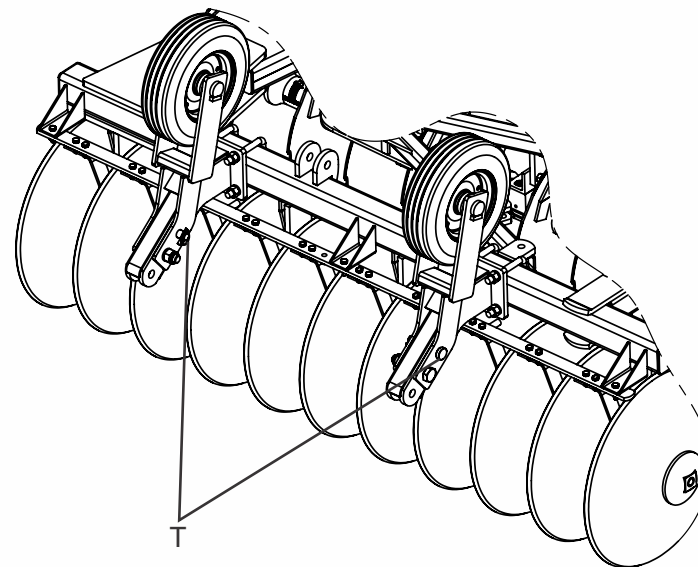


Fig. 2.1(g)

2. During harrow working tyre can be locked at point (T)

g) Disc harrow penetration

Factors affecting disc harrow penetration are

1. Angle of the gang
2. Weight of the harrow
3. Disc diameter
4. Disc sharpness (Blunt disc increases the draft considerably, check the disc sharpness)
5. Angle of hitch

2.2 ATTACHING THE HARROW TO THE TRACTOR

1. Place the harrow duly leveled on the flat piece of land.
2. Reverse the tractor to the harrow (Do not drag the harrow up the tractor)
3. Attach the left arm of the tractor to the harrow first.
4. Attach the central arm to the harrow. To attach, turn the screws on both sides to an equal length. If the arm is too short or too long, turn the screw to adjust both at the same time until aligned with the hole on the central arm.

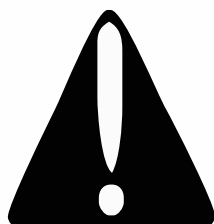
5. Attach the lower right arm; turn the screw until the mounting pin is at the same level the hole on the tractor arm. If the gap between the hole and mounting pin is too close or too distant.
6. Turn the control arm in or pull it away to an appropriate distance. You may have to adjust both height and distance at the same time. When the hole at tractor arm and mounting pin are even, insert the pin in the hole and lock it with the lynch pin.
7. After attaching the harrow, lift it and adjust the control arm parallel to the ground. When you look from both rear or sideways, the discs should all be touching the ground uniformly.

2.3 WARNING FOR THE DRIVER

1. Before harrowing check all nuts & bolts of the disc harrow.
2. Be vigilant about the tree roots and stones. Don't harrow on stony soil.
3. Tractor should be in first high or fourth low gear.
4. Don't allow anyone to come across the harrow.
5. Lift the harrow before approaching the road.

2.4 DANGER

Before harrowing with Disc harrow, ensure that nobody stands near it.
Understanding the Machine Safety Labels



Safety-Alert Symbol

The machine safety labels shown in this section are placed in important areas on your machine to draw attention to potential safety hazards.

On your machine safety labels, the words DANGER, WARNING, and CAUTION are used with this safety-alert symbol. DANGER identifies the most serious hazards. The operator's manual also explains any potential safety hazards whenever necessary in special safety messages that are identified with the word CAUTION and the safety alert symbol.

⚡ Before harrowing with Disc harrow take care that nobody stands near it.



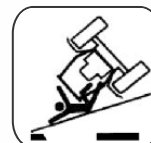
In order to protect yourself always wear adequate clothes and shoes during the operations.



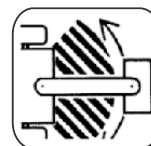
Never use your hands to check hydraulic leaks. Escaping hydraulic oil under pressure may have sufficient force to penetrate the skin causing personal injury.



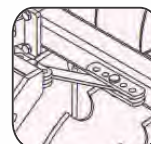
Never allow riders on the tractor or implement unless on additional seat is available.



Be careful when moving around steep gradient to avoid sharp turn.



Never transport the implement on rough roads during the night. When operating, avoid to make sharp turns that may interfere with the implement.



Never use the implement without drawbar link strip; it will cause damage to tractor tyre while turning

3. MAINTENANCE

3.1 MAINTENANCE INSTRUCTIONS

If you have to work on the stony land then maintenance of the Disc harrow also increases.

1. If the soil has entered the grease nipple, then change the nipple.
2. If disc harrow is new then after initial working of first two hours, tighten all nuts & bolts.
3. After every fifty hours grease all greasing points with grease gun and tighten all nuts & bolts.
4. After fifty hours, open the bearing hub assembly of disc harrow & clean with diesel oil & pump in new grease.

3.2 STORAGE OF MACHINE AFTER WORK

1. Wash the disc harrow after work.
2. Replace the worn out nuts & bolts.
3. If disc harrow has to remain unused for long time then clean it & apply a layer of used oil for rust prevention.

These steps will enhance the life of your Compact Model harrow.

3.3 LUBRICATION

Please take care that high quality grease is used in bearing hub assembly.

3.4 INSTRUCTIONS FOR DRIVER

1. When Disc harrow is ready for use don't stand between disc harrow & the tractor.
2. Properly fit the linkage as mentioned above & lock with lynch pin.
3. In case of scraper touching the discs, loosen the scraper bolt and readjusts the scraper.
4. Never turn the tractor to the right or left when the harrow is engaged in the soil.
5. Never reverse the tractor when the harrow is engaged in the soil.
6. To get good results from the harrow, disc should be replaced when its diameter is reduced by 5" /125mm from its original size.

4. OPERATIONAL GUIDELINES FOR HARROW

1. No need to lift the harrow on turning.
2. Adjust internal /external check tractor chains to obtain implement swing range within 50 mm (2") when raised.
3. Always maintain the correct tyre pressure to avoid wheel slippage.
4. Adding of wheel weights/water ballasting or combination of both is recommended when excessive rear wheel slippage is experienced.
5. Always set hydraulic levers correctly for draft and position control operation.

The following setting is necessary to ensure that uniform working depth is maintained

a.) SIDE DRAFT

The disc harrow will trail correctly behind the tractor provided the side thrust of the front gang is equal to that of rear. In case it is different there will be side draft. To set it correctly, the gang angle should be changed.

Precautions during transportation

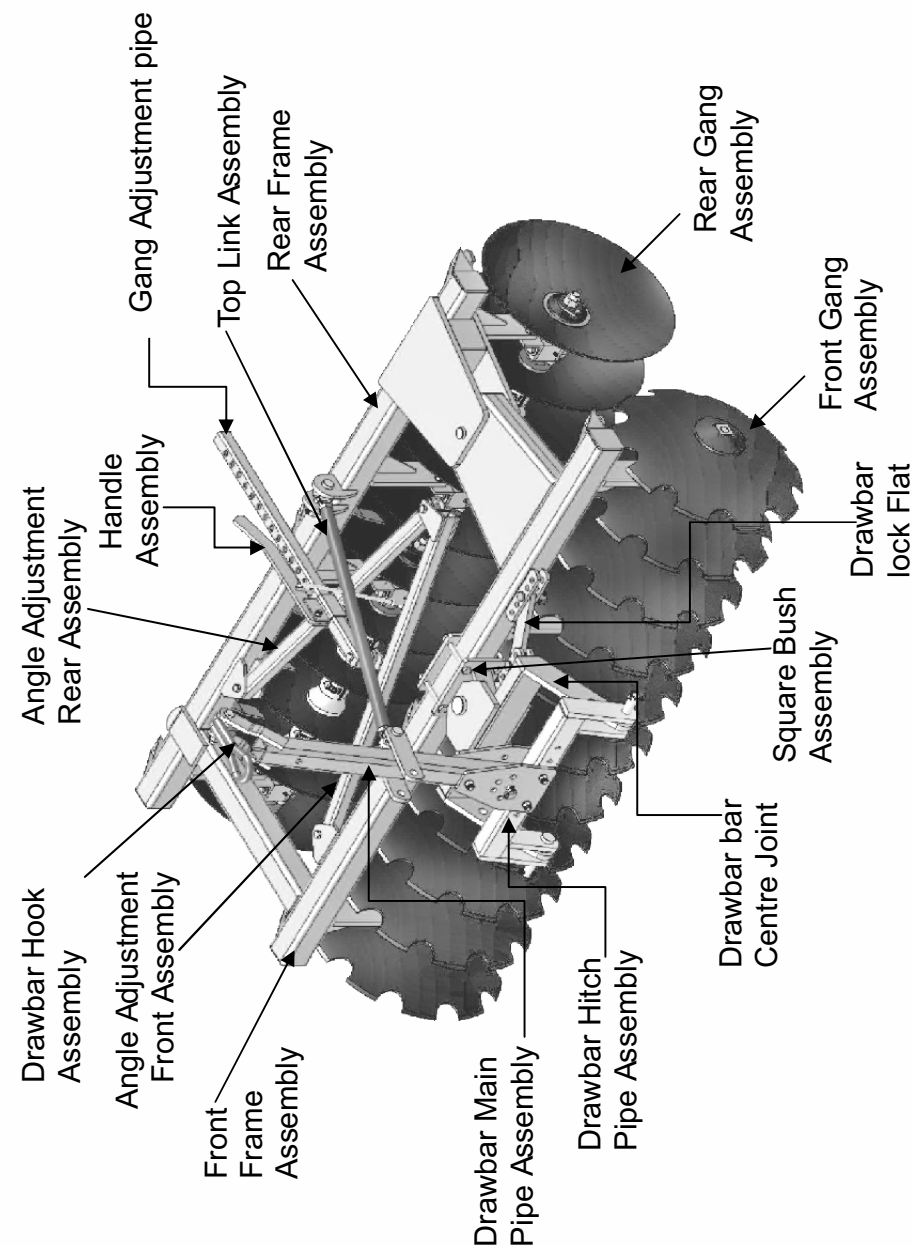
1. When transporting the harrow, shorten up top link to minimum length.
2. Set hydraulic levers in top raised position and lock levers.
3. Maintain the speed to avoid jumps.
4. Watch while overtaking on road.
5. Always use SMV (Slow Moving Vehicles) symbols.



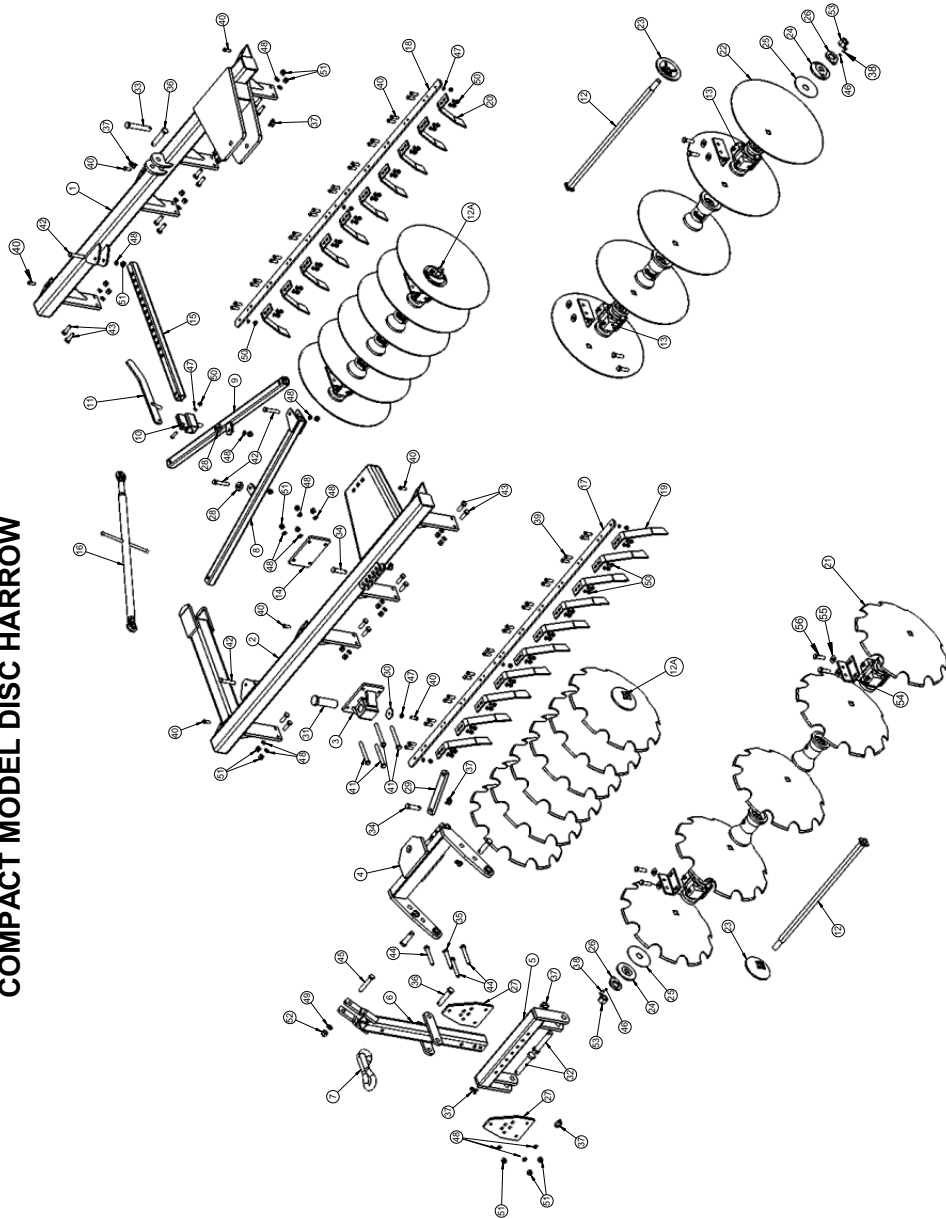
Dear user!
Respect the Ecology.
Do not throw the trash away.
This gesture helps to protect our Environment.

5. TROUBLE SHOOTING CHART

SR. No.	POSSIBLE CAUSES	POSSIBLE REMIDIES
1. Side Draft		
1.1	Disc not running level	Adjust using leveling lever
1.2	Gangs improperly angled	Set the gangs
1.3	Too much left hand offset	Swing the hitch to the left
2. Excessive field slippage		
2.1	Tractor overloaded	Reduce angle, reduce depth
2.2	Not enough tractor ballast	Add wheel weight or liquid
3. Uneven tillage		
3.1	Too much left hand offset	Swing hitch to the left
3.2	Tractor wheel running in furrow enlarging it	Drive the tractor in unworked ground
3.3	Disc too far from furrow (tillage)	Keep the left front discs in furrow (tillage)
3.4	Gang wrong fitment	The concave face of front discs should be fitted in the right hand side direction of tractor. And rear discs should be fitted in opposite direction of front discs.
4. Poor penetration		
4.1	Hard ground	Swing hitch to the right. Increase angle in front and rear gang.
5. Disc unsteady		
5.1	Too much angle in gang	Reduce the gang angle
6. Gang clogging		
6.1	Field too wet.	Disc at shallow depth for first pass to speed up drying process.
6.2	Gang set in maximum angle.	Reduce the angle
6.3	Not using scrapers	Install scrapers.
6.4	Scrapers worn out or not set properly.	Replace worn ones. Adjust scrapers close to the disc
6.5	Disc too deep in damp soil	Reduce penetration



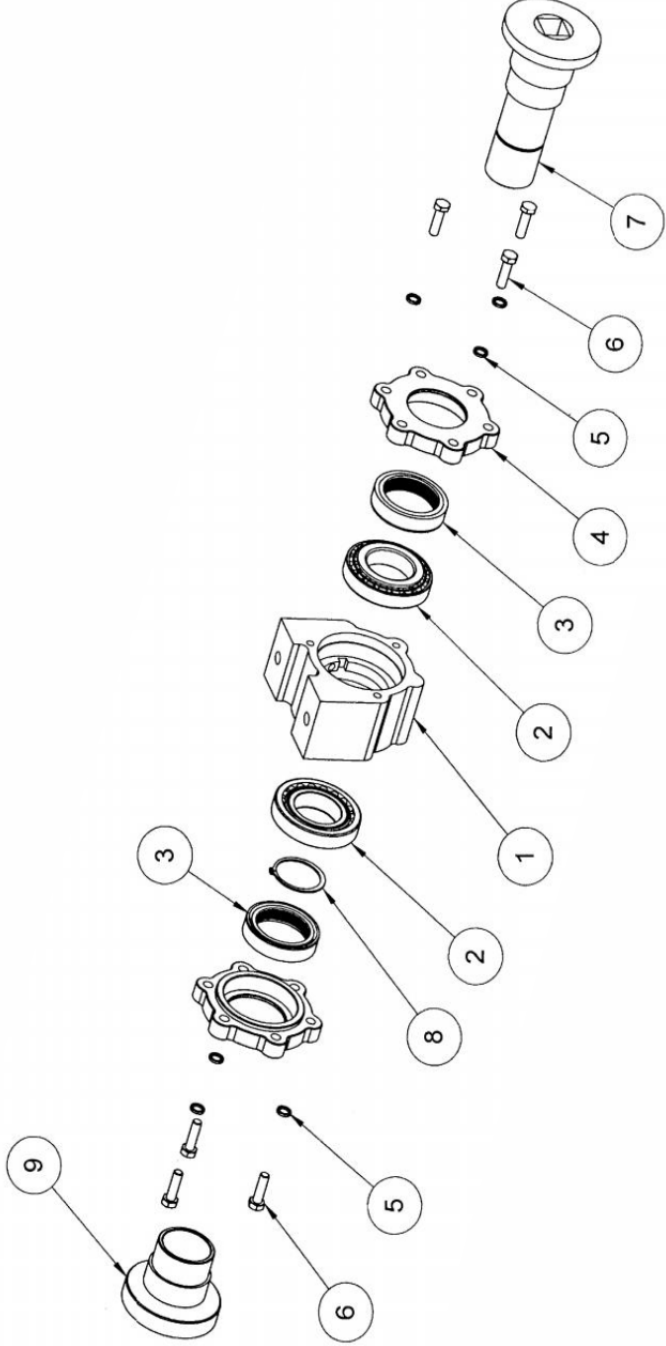
COMPACT MODEL DISC HARROW



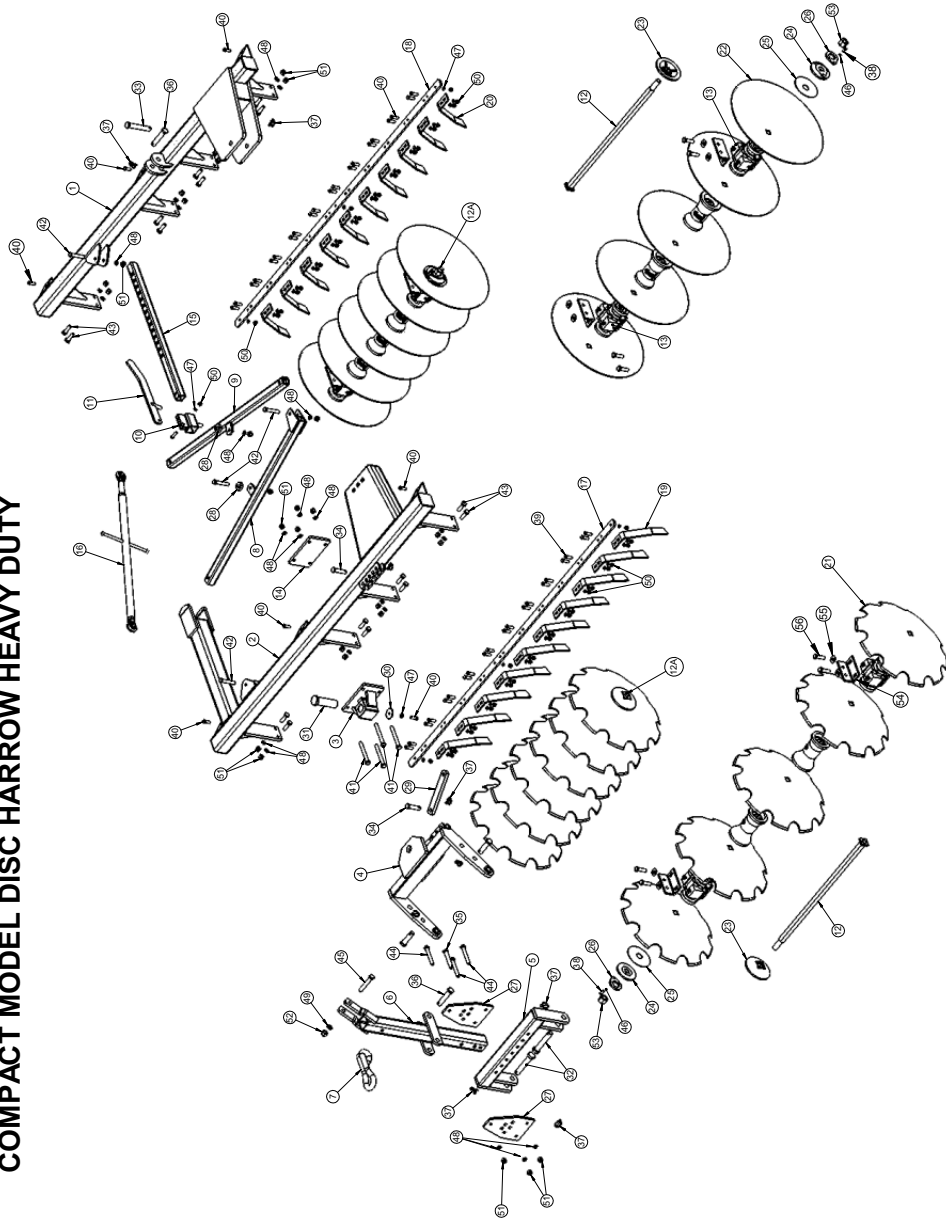
COMPACT MODEL DISC HARROW (8X8 TO 12X12)

SR. NO.	DESCRIPTION	PART NO.					QTY.				
		8X8	9X9	10X10	11X11	12X12	8X8	9X9	10X10	11X11	12X12
1	COMPACT MODEL FRONT FRAME ASSY.	74090001	74130001	74160001	74210001	76440001					1
2	COMPACT MODEL REAR FRAME ASSY.	74100001	74140001	74170001	74220001	76450001					1
3	SQUARE BUSH ASSY.	73990001		74180001							1
4	DRAW BAR CENTER JOINT ASSY.			74010001							1
5	DRAWBAR HITCH PIPE ASSY.			74020001 (Without Tyre) / 76750001 (With Tyre)							1
6	DRAWBAR MAIN PIPE ASSY.			74030001							1
7	DRAWBAR HOOK ASSY.			76680001							1
8	ANGLE ADJUSTMENT FRONT ASSY.	74110001 / 76880001		74190001 / 76880003							1
9	ANGLE ADJUSTMENT REAR ASSY.	74120001 / 76880002		74200001 / 76880004							1
10	GANG ADJUSTMENT PIPE HOLDER ASSY.			74070001							1
11	HANDLE ASSY.			74080001							1
12	AXLE ROD ASSY.	71110002	71130003	71130003	74080001	71090002	2	2	4	2	4
12 (A)			72850001		71090002			2		2	
13	BEARING HUB ASSY.			72060001			6				8
14	RECTANGULAR PLATE 4 HOLE	73990004		74150002			1				1
15	GANG ADJUSTMENT PIPE			74070003							1
16	TOP LINK COMLEAT SET			73970023							1
17	SCRAPER HOLDING FLAT FRONT	74090003	74130007	74160003	74240003	74210003					1
18	SCRAPER HOLDING FLAT REAR	74070004	74130008	74160004	74210004	76450002					1
19	SCRAPER FRONT			73970016, 73970017			7	8	9	10	11
20	SCRAPER REAR			73970017			7	8	9	10	11
21	NOTCHED DISC 26"x6T, (24"x4.5T)			10240015, 10240072			8	9	10	11	12
22	PLAIN DISC 26"x6T, (24"x4.5T)			10240003, 10240071			8	9	10	11	12
23	CHAPPEN BIG			74050004			2				4
24	CHAPPEN SMALL			74070002			2				4
25	DISC WASHER			71060002			2				4
26	GANG LOCK PLATE			71050009			2				4
27	DRAWBAR JOINT PLATE			73970020							2
28	PACKING WASHER			73970019							2
29	DRAW BAR LOCK FLAT			73970018							1
30	PACKING WASHER			73970022							1
31	PIN Ø 45X150L WITH THREAD HOLE			73970021							1
32	PIN Ø 28x165L			10020110							2
33	PIN Ø 25x165L			10020037							1
34	PIN Ø 19x90L			10020026							2
35	PIN Ø 19x140L			10020120							1
36	PIN Ø 25x130L			10020036							2
37	LINCH PIN 10MM			10020022							8
38	HEX BOLT M10X1.5PX25L			10260158			2				4
39	HEX BOLT M12X1.75PX40L			10260008			35	39	43	47	51
40	HEX BOLT M12X1.75PX45L			10260129							1
41	HEX BOLT M16X2PX150L / M16X2PX160L	10260155		10260044			4				4
42	HEX BOLT M16x100L			10260403							4
43	HEX BOLT M16x60L			10260380			12				16
44	HEX BOLT M16X2.5PX130L			10260404							3
45	HEX BOLT M20X2.5PX130L			10260398							1
46	SPRING WASHER 10MM			10270002			2				4
47	SPRING WASHER 12MM			10270003			36	40	44	48	52
48	SPRING WASHER 16MM			10270005			24				28
49	SPRING WASHER 20MM			10270016							1
50	NYLOCK NUT M12X1.75P			10280025			35	39	43	47	51
51	NYLOCK NUT M16X2P			10280005			24				28
52	NYLOCK NUT M20X2.5P			10280021							1
53	PLAIN NUT 28 MM 7G BSW			10280014			2				4
54	HUB ANGLE			74050002			6				8
55	PLAIN WASHER M16			10270020			12				16
56	HEX HEAD BOLT M16X2PX40L			10260374			12				16

BEARING HUB ASSY. (FKMODH-509)

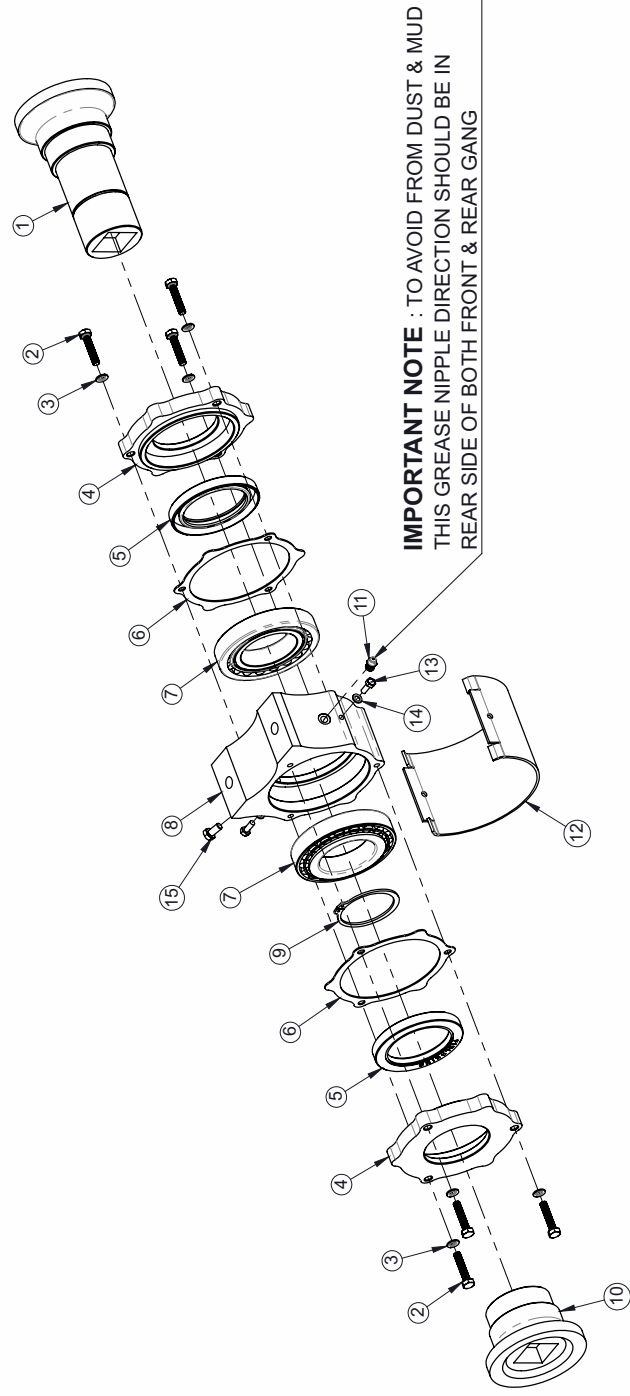


BEARING HUB ASSY.			
SR. NO.	DESCRIPTION	PART NO.	QTY.
1	BEARING HUB	10090008	1
2	BEARING 30211	10050004	2
3	OIL SEAL 65X85X18T	10010003	2
4	BEARING HUB COVER	10180010	2
5	SPRING WASHER 10MM	10270002	6
6	HEX BOLT M10X35X1.5P	10260053	6
7	BEARING SPOOL	10340003	1
8	CIRCLIP 55MM (EXTERNAL)	10390001	1
9	BEARING SPOOL CAP	10180007	1



COMPACT MODEL DISC HARROW (8X8 TO 12X12) HEAVY DUTY

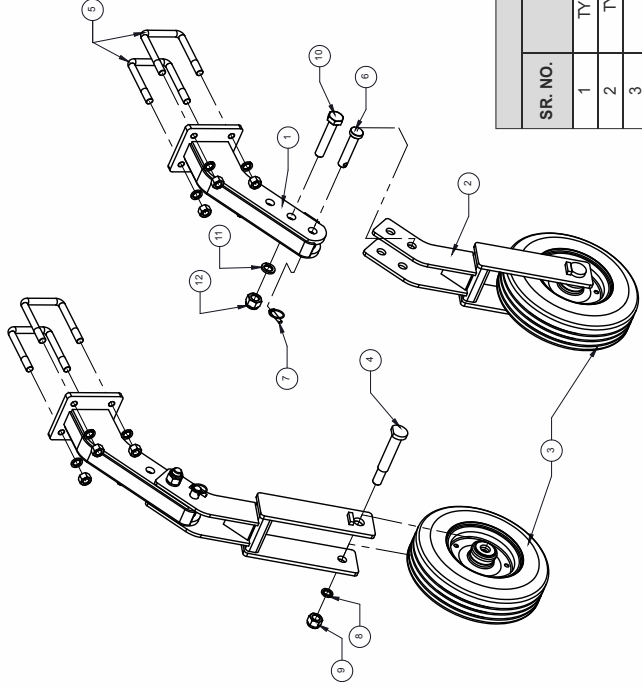
SR. NO.	DESCRIPTION	PART NO.					QTY.				
		8X8	9X9	10X10	11X11	12X12	8X8	9X9	10X10	11X11	12X12
1	COMPACT MODEL FRONT FRAME ASSY.	74090001	74130001	74160001	74210001	76440001					1
2	COMPACT MODEL REAR FRAME ASSY.	74100001	74140001	74170001	74220001	76450001					1
3	SQUARE BUSH ASSY.	73990001		74180001							1
4	DRAW BAR CENTER JOINT ASSY.			74010001							1
5	DRAWBAR HITCH PIPE ASSY.			74020001 (Without Tyre) / 76750001 (With Tyre)							1
6	DRAWBAR MAIN PIPE ASSY.			74030001							1
7	DRAWBAR HOOK ASSY.			76680001							1
8	ANGLE ADJUSTMENT FRONT ASSY.	74110001 / 76880001		74190001 / 76880003							1
9	ANGLE ADJUSTMENT REAR ASSY.	74120001 / 76880002		74200001 / 76880004							1
10	GANG ADJUSTMENT PIPE HOLDER ASSY.			74070001							1
11	HANDLE ASSY.			74080001							1
12	AXLE ROD ASSY.	71050008	79940004	74890001	74920001 / 74890001	74920001	2	2	4	2	4
12(A)	BEARING HUB ASSY.			72060001			6	2			
13	RECTANGULAR PLATE 4 HOLE	73990004		74150002			1				1
14	GANG ADJUSTMENT PIPE			74070003							1
15	TOP LINK COMEAT SET			73970023							1
16	SCRAPER HOLDING FLAT FRONT	74090003	74130007	74160003	74240003	74210003					1
17	SCRAPER HOLDING FLAT REAR	74070004	74130008	74160004	74210004	76450002					1
18	SCRAPER FRONT			73970016, 73970017			7	8	9	10	11
19	SCRAPER REAR			73970017			7	8	9	10	11
20	NOTCHED DISC 26"x6T, (24"x4.5T)			10240015, 10240072			8	9	10	11	12
21	PLAIN DISC 26"x6T, (24"x4.5T)			10240003, 10240071			8	9	10	11	12
22	CHAPPEN BIG			10360006			2				4
23	CHAPPEN SMALL			10360008			2				4
24	DISC WASHER			10270022			2				4
25	GANG LOCK PLATE			74830003			2				4
26	DRAWBAR JOINT PLATE			73970020							2
27	PACKING WASHER			73970019							2
28	DRAW BAR LOCK FLAT			73970018							1
29	PACKING WASHER			73970022							1
30	PIN Ø 45X150L WITH THREAD HOLE			73970021							1
31	PIN Ø 28x165L			10020110							2
32	PIN Ø 25x165L			10020037							1
33	PIN Ø 19x90L			10020026							2
34	PIN Ø 19x140L			10020120							1
35	PIN Ø 25x130L			10020036							2
36	LINCH PIN 10MM			10020022							8
37	HEX BOLT M10X1.5PX25L			10260158			2				4
38	HEX BOLT M12X1.75PX40L			10260008			35	39	43	47	51
39	HEX BOLT M12X1.75PX45L			10260129							1
40	HEX BOLT M16X2PX150L / M16X2PX160L	10260155		10260044			4				4
41	HEX BOLT M16x100L			10260403							4
42	HEX BOLT M16x60L			10260380			12				16
43	HEX BOLT M16X2.5PX130L			10260404							3
44	HEX BOLT M20X2.5PX130L			10260398							1
45	SPRING WASHER 10MM			10270002			2				4
46	SPRING WASHER 12MM			10270003			36	40	44	48	52
47	SPRING WASHER 16MM			10270005			24				28
48	SPRING WASHER 20MM			10270016							1
49	NYLOCK NUT M12X1.75P			10280025			35	39	43	47	51
50	NYLOCK NUT M16X2P			10280005			24				28
51	NYLOCK NUT M20X2.5P			10280021							1
52	PLAIN NUT 28 MM 7G BSW			10280014			2				4
53	HUB ANGLE			74530007			6				8
54	PLAIN WASHER M16			10270020			12				16
55	HEX HEAD BOLT M16X2PX40L			10260374			12				16



BEARING HUB ASSEMBLY

ITEM NO.	DESCRIPTION	PART NO.	QTY.
1	BEARING SPOOL SQ. 41MM	10340017	1
2	HEX BOLT M8x1.25x40L	10260373	6
3	SPRING WASHER 8MM	10270001	6
4	BEARING HUB COVER	10150016	2
5	OIL SEAL 80x110x13T	10010020	2
6	BEARING HUB GASKET	10040048	2
7	BEARING-30214	10050040	2
8	BEARING HUB	10090031	1
9	CIRCLIP EXTERNAL 70A	10390012	1
10	BEARING SPOOL CAP SQ. 41MM	10180021	1
11	GREASE NIPPLE 10MM	10300089	1
12	HUB SAFETY COVER	79590001	1
13	ALLEN BOLT M6X12	10260178	2
14	SPRING WASHER 6MM	10270033	2
15	HEX HEAD BOLT M8x16x1.25P	10260779	1

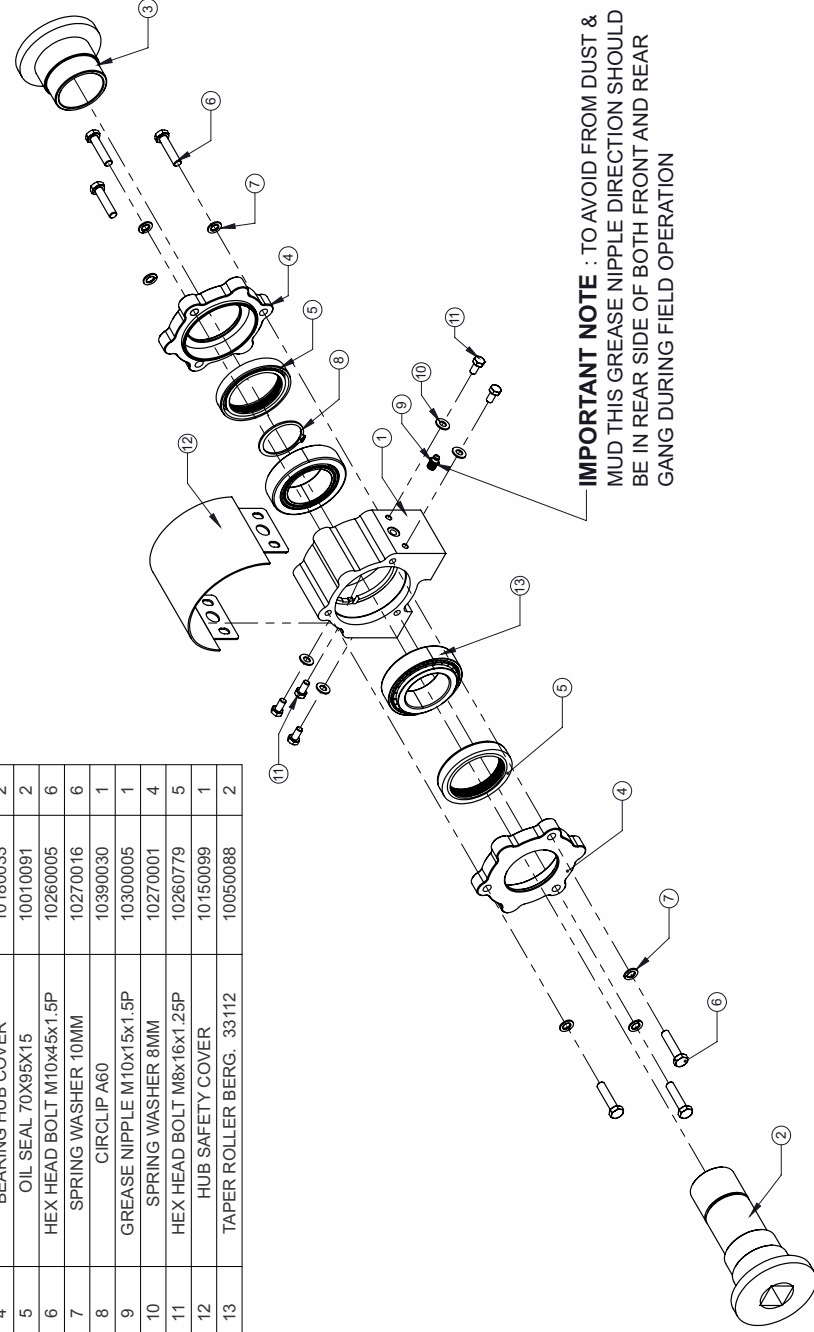
TYRE ASSEMBLY (8X8 TO 12X12)



TYRE SET ASSEMBLY (8x8 To 12x12)												
SR. NO.	DESCRIPTION	8X8	9X9	10X10	11X11	12X12	8X8	9X9	10X10	11X11	12X12	
		76530001		76770001						2		
1	TYRE HOLDING ASSY.											
2	TYRE CLAMP ASSY.		76540001								2	
3	TYRE ASSY.		70900006								2	
4	TYRE AXLE PIN ASSY.		76520001								2	
5	U-CLAMP SET	10220037		10220009							4	
6	PIN Ø25x130L		10020036								2	
7	LINCH PIN 10MM		10020022								2	
8	SPRING WASHER 25MM		10270007								2	
9	NYLOCK NUT 25MM		10280008								2	
10	HEX HEAD BOLT M24x130x3P		10260416								2	
11	SPRING WASHER 24MM		10270027								2	
12	NYLOCK NUT M24x3P		10280075								2	

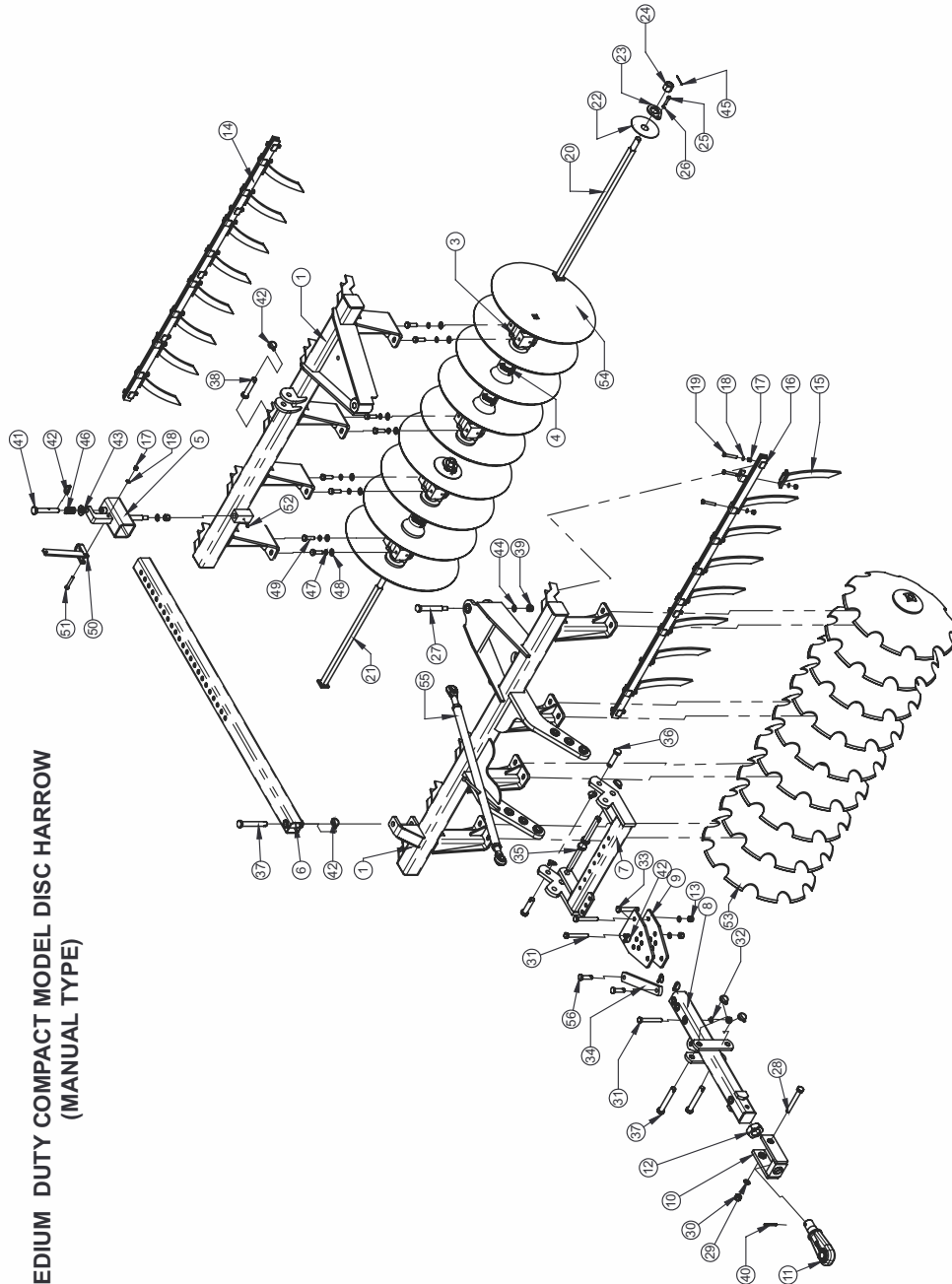
BEARING HUB (FOR 32 MM AXLE)

ITEM NO.	DESCRIPTION	PART NO.	QTY.
1	BEARING HUB	10090048	1
2	BEARING SPOOL	10340023	1
3	BEARING SPOOL CAP	10180034	1
4	BEARING HUB COVER	10180033	2
5	OIL SEAL 70X95X15	10010091	2
6	HEX HEAD BOLT M10x45x1.5P	10260005	6
7	SPRING WASHER 10MM	10270016	6
8	CIRCLIP A60	10390030	1
9	GREASE NIPPLE M10x15x1.5P	10300005	1
10	SPRING WASHER 8MM	10270001	4
11	HEX HEAD BOLT M8x16x1.25P	10260779	5
12	HUB SAFETY COVER	10150099	1
13	TAPER ROLLER BERG. 33112	10050088	2



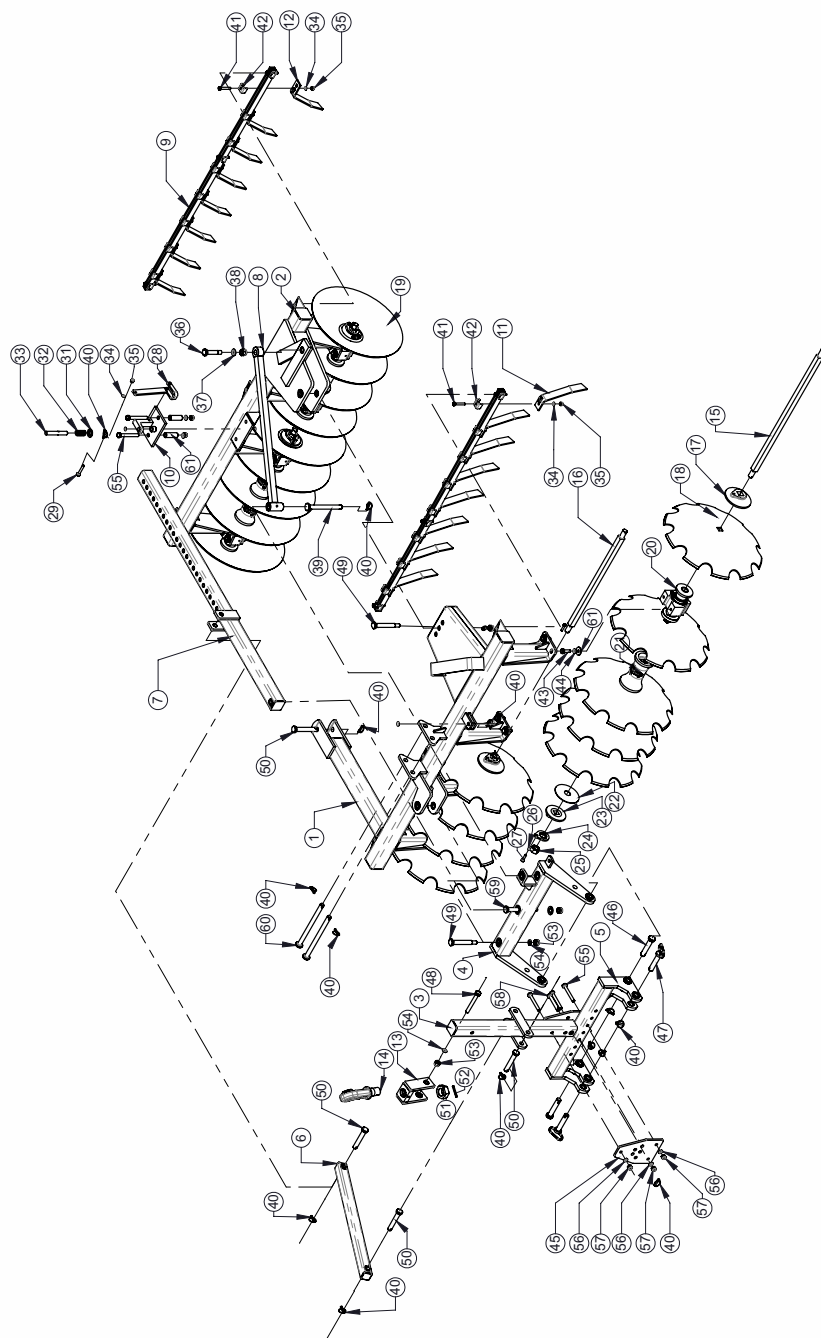
IMPORTANT NOTE : TO AVOID FROM DUST & MUD THIS GREASE NIPPLE DIRECTION SHOULD BE IN REAR SIDE OF BOTH FRONT AND REAR GANG DURING FIELD OPERATION

MEDIUM DUTY COMPACT MODEL DISC HARROW
(MANUAL TYPE)



MEDIUM DUTY COMPACT MODEL DISC HARROW (MANUAL TYPE)

ITEM NO.	PART DESCRIPTION	PART NO.	QTY.
		9X9	
1	FRONT FRAME ASSEMBLY	74130010	1
2	REAR FRAME ASSEMBLY	74130011	1
3	BEARING HUB ASSEMBLY (34MM)	72060002	8
4	PLAIN SPOOL (34MM)	10340037	6
5	GANG ADJUSTMENT PIPE HOLDER ASSEMBLY	74070007	1
6	GANG ADJUSTMENT PIPE ASSY.	74060003	1
7	HITCH PIPE ASSEMBLY	74020005	1
8	DRAWBAR PIPE ASSY	74030011	1
9	DRAWBAR JOINT PLATE	73970020	2
10	HOOK BRACKET ASSY.	74030010	1
11	HOOK ASSEMBLY (HYDRAULIC HARROW)	79480018	1
12	NUT HYDRAULIC HARROW HOOK	10280270	1
13	NYLOCK NUT M18x2.5P	10280020	3
14	SCRAPER HOLDING FLAT ASSEMBLY (FRONT & REAR)	79930006	2
15	SCRAPER ASSEMBLY	74130032	18
16	SCRAPER HOLDING CLAMP	77840003	28
17	NYLOCK NUT M12x1.75P	10280025	29
18	SPRING WASHER 12MM	10270003	29
19	HEX HEAD BOLT M12x70x1.75P	10260407	28
20	AXLE ROD ASSY. 5-DISC	71130005	2
21	AXLE ROD ASSY. 4-DISC	72850003	2
22	DISC WASHER	71060002	4
23	GANG LOCK PLATE	71050009	4
24	PLAIN NUT 28MM 7G BSW	10280014	4
25	HEX HEAD BOLT M10X25X1.5MM	10260361	4
26	SPRING WASHER 10MM	10270002	4
27	PIN 25X194L	10020141	1
28	BOLT M20x150x2.5P	10260397	1
29	SPRING WASHER 20MM	10270016	1
30	NYLOCK NUT M20x2.5P	10280021	1
31	HEX HEAD BOLT M18X135X2.5MM	10260437	3
32	SPRING WASHER 18MM	10270006	3
33	PIN Ø19x125L	10020009	1
34	DRAWBAR ADJUSTMENT FLAT	73970018	1
35	PIN Ø28x165L	10020110	2
36	PIN Ø25x100L	10020069	2
37	PINØ25x165L	10020037	3
38	PINØ25x120L	10020035	3
39	NYLOCK NUT M25x3P	10280008	1
40	SPRING DOWEL PIN 10x65L	10210028	1
41	PIN Ø22x150L	10020320	1
42	LINCH PIN 10MM	10020022	4
43	PLAIN WASHER 25MM	10270024	1
44	SPRING WASHER 25MM	10270007	1
45	SPLIT PIN 4MMx55MM	10020054	4
46	COMPRESSION SPRING	10210041	1
47	SPRING WASHER 16MM	10270005	16
48	PLAIN WASHER 16MM	10270020	16
49	HEX HEAD BOLT M16X40X2MM (8.8 GRADE)	10260374	16
50	HANDLE ASSEMBLY	74080006	1
51	HEX HEAD BOLT M12x80x1.75P	10260118	1
52	GREASE NIPPLE M10X6X1.5MM	10300095	1
53	BORON STEEL NOTCHED DISC 26\"X6MM / 24\"X4.5MM (34MM)	10240150/10240152	9
54	BORON STEEL PLAIN DISC 26\"X6MM / 24\"X4.5MM (34MM)	10240151/10240153	9
55	TOP LINK ASSEMBLY (COMPACT HARROW)	73970023	1
56	PIN Ø19x70L	10020130	2



COMPACT HARROW WITH AUTO ANGLE ADJUSTMENT

Sr. NO	PART DESCRIPTION	PART NO.		QTY.	
		9X9	10X10	9X9	10X10
1	"FRONT FRAME ASSEMBLY"	74130052	74160005	1	
2	REAR FRAME ASSEMBLY	74140022	74170002	1	
3	DRAWBAR PIPE ASSEMBLY	74030001		1	
4	CENTER JOINT ASSEMBLY	74010007		1	
5	HITCH PIPE ASSEMBLY	74020007		1	
6	LEVER PIPE ASSEMBLY	74140028		1	
7	GANG ADJUSTMENT PIPE ASSEMBLY	74050007		1	
8	ADJUSTMENT ROD ASSEMBLY	74020008		1	
9	SCRAPPER HOLDING FLAT ASSEMBLY	79930002	79930003	2	
10	HOLDER ASSEMBLY	74070007		1	
11	SCRAPPER ASSEMBLY (FRONT)	73970025		8	9
12	SCRAPPER ASSEMBLY (REAR)	79940002		8	9
13	HOOK BRACKET ASSEMBLY	74030010		1	
14	HOOK ASSEMBLY	79480018		1	
15	AXLE ROD ASSEMBLY -5 DISC	71130005		2	4
16	AXLE ROD ASSEMBLY -4 DISC	72850003		2	----
17	BIG CHAPPEN	10360013		4	
18	NOTCHED DISC 26x6 / NOTCHED DISC 24X4.5	10240150/10240152		9	10
19	PLAIN DISC 26X6 / PLAIN DISC 24X4.5	10240151/10240153		9	10
20	BEARING HUB ASSEMBLY	72060004		8	
21	PLAIN SPOOL	10340037		6	8
22	DISC WASHER	71060002		4	
23	SMALL CHAPPEN	10360014		4	
24	GANG LOCK	71050009		4	
25	AXLE NUT	10280014		4	
26	SPRING WASHER 10MM	10270002		4	
27	HEX HEAD BOLT M10x25x1.5P	10260361		4	
28	HANDLE ASSEMBLY	74080006		1	
29	HEX HEAD BOLT M12x80x1.75P	10260447		1	
30	PIN 19X70L	10020130		1	
31	PLAIN WASHER 25MM	10270024		1	
32	COMPRESSION SPRING	10210041		1	
33	PIN Ø22MM	10020320		1	
34	SPRING WASHER 12MM	10270003		23	27
35	NYLOCK NUT 12MM	10280025		23	27
36	HEX HEAD BOLT M24X90X3P	10260469		1	
37	SPRING WASHER 24MM	10270027		1	
38	NYLOCK NUT M24X3P	10280075		1	
39	PIN 25X250L	10020348		1	
40	LINCH PIN 10MM	10020022		11	11
41	HEX HEAD BOLT M12x70x1.75P	10260407		22	26
42	SCRAPPER HOLDING CLAMP	77840003		22	26
43	HEX HEAD BOLT M16X40X2P	10260374		16	16
44	NYLOCK NUT M16X2P	10280005		16	16
45	DRAWBAR JOINT PLATE	73970020		1	
46	PIN 28X155L	10020134		2	
47	HANDLE PIN Ø28X145L	10020047		2	
48	HEX HEAD BOLT M20x170L	10260319		1	
49	SPECIAL PIN Ø25x194L	10020141		2	
50	PIN Ø25x165L	10020037		4	
51	HEX NUT (M48X5P)	10280270		1	
52	SPRING DOWEL PIN 10X65	10210028		1	
53	NYLOCK NUT M20	10280021		1	
54	SPRING WASHER 20MM	10270016		1	
55	HEX HEAD BOLT M18x135L	10260437		5	
56	SPRING WASHER 18MM	10270006		5	
57	NYLOCK NUT M18	10280020		5	
58	PIN Ø19x125L	10020009		1	
59	PIN Ø25x225L	10020349		1	
60	PIN Ø25x355L	10020021		2	
61	PLAIN WASHER 16MM	10270020		16	
62	SPRING ATTACHMENT BOLT HOLDING BUSH	10070194		2	

DELIVERY CHECKLIST

Dealer Pre-Delivery (Please Tick)	Please Complete all Dealer information Below
1. Dealer Pre-Delivery Checklist <ol style="list-style-type: none"> The customer or person responsible has been given the operator's manual. The customer undertakes to read the complete operator's manual and understands all aspects of the manual before operation of the machine. All safety, operational and maintenance information have been explained and demonstrated. All greasing and oil points, stickers, guarding and ID plate have been identified and physically pointed out. The customer agrees that it is his responsibility to read and carry out the safety, maintenance and operation as per this operator's manual. 	Dealer Information <p>Dealer's Name.....</p> <p>Address.....</p> <p>State..... Postcode.....</p> <p>Phone..... Fax.....</p> <p>Email.....</p> <p>Service Person.....</p> <p>I confirm that the pre-delivery service was performed on this machine.</p> <p>Signature.....</p> <p>Date.....</p> <p>Comments.....</p>
Customer Delivery (Please Tick)	Please Complete all Customer Information Below
2. Customer Delivery Checklist <ol style="list-style-type: none"> The customer or person responsible has been given the operator's manual. The customer undertakes to read the complete operator's manual and understands all aspects of the manual before operation of the machine. All safety, operational and maintenance information have been explained and demonstrated. All greasing and oil points, stickers, guarding and ID plate have been identified and physically pointed out. The customer agrees that it is his responsibility to read and carry out the safety, maintenance and operation as per this operator's manual. 	Customer Information <p>Customer's Name.....</p> <p>Address.....</p> <p>State..... Postcode.....</p> <p>Phone..... Fax.....</p> <p>Email.....</p> <p>Delivery Person.....</p> <p>I confirm that all of the delivery checks were explained and performed.</p> <p>Signature.....</p> <p>Delivery Date.....</p> <p>Comments.....</p>

FIELDKING

WARRANTY CARD Customer Copy

CUSTOMER NAME Mr./ Mrs :

ADDRESS :

MOBILE NO. :

Email :

NAME OF IMPLEMENT :

MODEL NO. :

YEAR OF Mfg. :

SERIAL NO. :

REGISTRATION NO. :

DATE OF PURCHASING :

NAME OF DEALER :

Customer's Signature

Dealer's Signature



Beri Udyog Pvt. Ltd.

Corporate Office : Plot No. 235-236 & 238-240, Sec-3, HSIIDC,
Karnal- 132001 (Haryana), India ☎ +91-184-2221571/ 72/ 73
✉ marketing@fieldking.com, exports@fieldking.com, 🌐 www.fieldking.com

FIELDKING

WARRANTY CARD Company Copy

CUSTOMER NAME Mr./ Mrs :

ADDRESS :

MOBILE NO. :

Email :

NAME OF IMPLEMENT :

MODEL NO. :

YEAR OF Mfg. :

SERIAL NO. :

REGISTRATION NO. :

DATE OF PURCHASING :

NAME OF DEALER :

Customer's Signature

Dealer's Signature



Beri Udyog Pvt. Ltd.

Corporate Office : Plot No. 235-236 & 238-240, Sec-3, HSIIDC,
Karnal- 132001 (Haryana), India 📞 +91-184-2221571/ 72/ 73

✉️ marketing@fieldking.com, exports@fieldking.com, 🌐 www.fieldking.com

FIELDKING

WARRANTY CARD

Dealer Copy

CUSTOMER NAME Mr./ Mrs :

ADDRESS :

MOBILE NO. :

Email :

NAME OF IMPLEMENT :

MODEL NO. :

YEAR OF Mfg. :

SERIAL NO. :

REGISTRATION NO. :

DATE OF PURCHASING :

NAME OF DEALER :

Customer's Signature

Dealer's Signature



Beri Udyog Pvt. Ltd.

Corporate Office : Plot No. 235-236 & 238-240, Sec-3, HSIIDC,

Karnal- 132001 (Haryana), India ☎ +91-184-2221571/ 72/ 73

✉ marketing@fieldking.com, exports@fieldking.com, 🌐 www.fieldking.com