

# FIELDKING

## Hydraulic Harrow Heavy Series



➤ [Operator Manual](#) ➤ [Service Manual](#) ➤ [Part Catalogue](#)

## CONGRATULATIONS!

You have invested in one of the best implements of its type in the market today.

The care you give your "FIELDKING" implement will greatly determine your satisfaction with its performance and its service life. A careful study of this manual will give you a thorough understanding of your new implement before operating.

If your manual is lost or destroyed, "FIELDKING" will be glad to provide you a new copy. Visit to nearest dealership & get a copy. Most of our manuals can also be downloaded from our website at [www.fieldking.com](http://www.fieldking.com).

As an authorized "FIELDKING" dealer, we stock genuine "FIELDKING" parts which are manufactured with the same precision and skill as our original equipment. Our trained service persons are well informed on methods required to service "FIELDKING" equipments and are ready to help you.

Should you require additional information or assistance, please contact us.

YOUR AUTHORIZED  
FIELDKING DEALER

BECAUSE "FIELDKING" MAINTAINS AN ONGOING PROGRAMME OF PRODUCT IMPROVEMENT, WE RESERVE THE RIGHT TO MAKE IMPROVEMENTS IN DESIGN OR CHANGE IN SPECIFICATION WITHOUT INCURRING ANY OBLIGATION TO INSTALL THEM ON UNITS PREVIOUSLY SOLD. BECAUSE OF THE POSSIBILITY THAT SOME PHOTOGRAPHS IN THIS MANUAL WERE TAKEN OF PROTOTYPE MODELS, PRODUCTION MODELS MAY VARY IN SOME DETAIL. IN ADDITION, SOME PHOTOGRAPHS MAY SHOW SHIELDS REMOVED FOR THE PURPOSE OF CLARITY. NEVER OPERATE THIS IMPLEMENT WITHOUT ALL SHIELDS IN PLACE.

## TO THE PURCHASER

This manual contains valuable information about your new "FIELDKING" hydraulic harrow heavy series. It has been carefully prepared to give you helpful suggestions for operating, adjusting, servicing and ordering spare parts.

Keep this manual in a convenient place for quick and easy reference. Study it carefully. You have purchased a dependable and sturdy hydraulic harrow heavy series but only by proper care and operation you can expect to receive the service and long life designed and built into it.

Sometime in the future your hydraulic harrow heavy series may need new parts to replace those that are worn or broken. If so, go to your dealer and provide him with the model and part number.

### CUSTOMER INFORMATION

Name \_\_\_\_\_

Purchased From \_\_\_\_\_

Date of Purchase \_\_\_\_\_

Model No. \_\_\_\_\_

Serial No. \_\_\_\_\_

## PURCHASER / OPERATOR'S RESPONSIBILITY

1. Read and understand the information contained in this manual.
2. Operate, lubricate, assemble and maintain the equipment in accordance with all instructions and safety procedures in this manual.
3. Inspect the equipment and replace or repair any parts that are damaged or worn out which under continued operation would cause damage, wear to other parts, or cause a safety hazard.
4. Return the equipment or parts to the authorized "FIELDKING" dealer, from where it was purchased, for service or replacement of defective parts that are covered by warranty. (The "FIELDKING" Factory may inspect equipment or parts before warranty claims are honored.)
5. All costs incurred by the dealer for traveling to or transporting the equipment for warranty inspection and claims will be borne by the customer.

## INDEX

### 1. TECHNICAL DATA

- 1.1 Introduction
- 1.2 Warranty
- 1.3 When the warranty becomes void
- 1.4 Warning

### 2. USAGE INSTRUCTIONS

- 2.1 Before Use & Adjustments
- 2.2 Attaching Harrow to the tractor
- 2.3 Warning for driver
- 2.4 Safety

### 3. MAINTENANCE

- 3.1 Maintenance Instructions
- 3.2 Storage of machine after work
- 3.3 Lubrication
- 3.4 Instruction for driver

### 4. OPERATIONAL GUIDELINES FOR HARROW

### 5. TROUBLE SHOOTING CHART

## 1. TECHNICAL DATA

### 1.1 INTRODUCTION

This handbook contains the use and maintenance instructions with a list of the spare parts of the hydraulic harrow heavy series.

This disc harrow is equipped with heavy-duty box frame specially designed for harrowing / land preparation of rough soil (Secondary finer operation).

Regular and satisfactory operation together with economic and long lasting use of the implement depends on the compliance with instructions given in this handbook.

Compliance with the instructions in this handbook is also important since manufacturer declines all and every responsibility for damage to persons or property caused by negligence and failure to comply with these instructions.

### 1.2 WARRANTY

When the machine is delivered, check that it has not been subjected to damage during transport and that the accessories are in a perfect condition and complete.

Any claims following the receipt of damaged goods shall be presented in writing within 8 days from the receipt of the goods.

The purchaser may only make the claims under warranty when he has complied with the warranty conditions in the supply contract.

### 1.3 WHEN THE WARRANTY BECOMES VOID

Besides the cases specified in the supply agreement, the warranty shall in any case become void.

1. When the implement has been used beyond the specified power limit like (Tractor horse power).
2. When repairs made by the customer without authorization from the manufacturer or owing to installation of spurious spare parts, the machine is subjected to variations and the damage can be ascribed to these variations.
3. When the user has failed to comply with the instructions in this handbook.
4. If the implement is used in very hard/stony soil no warranty of discs will be given.
5. No warranty will be given if the service and greasing is not done on time.

### 1.4 WARNING

1. Thoroughly read the instruction manual before proceeding with the various operations.
2. Maintain the harrow as per the instructions of this handbook to be entitled for warranty.

## 2. USAGE INSTRUCTIONS

### 2.1 BEFORE USE & ADJUSTMENTS

1. Before mounting of disc harrow make sure that all nuts & bolts are properly secured.
2. Also determine soil and trash conditions of the field and make the preliminary adjustments. e.g.

#### a) Disc gang angle adjustment

Gang angle (Angle between two gangs) ranges between 0° to 50°. The angle can be increased for better penetration in dry soil while it should be reduced to avoid clogging in wet soil.

#### b) Disc harrow leveling

To eliminate uneven penetration and side draft, leveling is done by means of drawbar adjustment. While tractor pulls to right the rear gang should be lowered a little. When the tractor pulls to the left the rear gang should be raised.

#### c) Scraper adjustment

The scraper can be adjusted by loosening the bolts at the scraper clamp.

#### d) Depth control

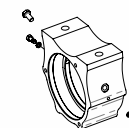
The depth at which the implement is required to work is controlled hydraulically by raising or lowering the control lever on the tractor.

#### e) Disc harrow penetration

Factors affecting disc harrow penetration are

1. Angle of the gang
2. Weight of the harrow
3. Disc diameter
4. Disc sharpness
5. Blunt disc increases the draft considerably, check the disc sharpness
6. Angle of hitch

#### f) Greasing nipple position during operation should be as shown in figure.



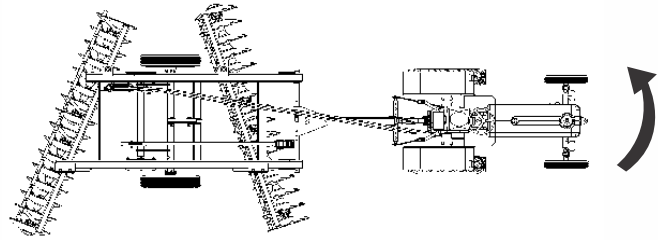
**IMPORTANT NOTE** : TO AVOID FROM DUST & MUD THIS GREASE NIPPLE DIRECTION SHOULD BE IN REAR SIDE OF BOTH FRONT AND REAR GANG DURING FIELD OPERATION

## 2.2 ATTACHING THE HARROW TO THE TRACTOR

1. Place the harrow duly leveled on the flat piece of land.
2. Reverse the tractor to the harrow (Do not drag the harrow up the tractor).
3. Attach tongue (Hook) of harrow securely to the towing tractor using drawbar pin.
4. Connect cleaned hydraulic couplers (Q.R.C value) of harrow to tractor.

### a) Maneuver direction

Never maneuver to the right hand side, because the angle formed by the disc angle, transmits great effort to the implement, overloading mainly the pulling components i.e. offset bar, drawbar etc.



## 2.3 WARNING FOR THE DRIVER

1. Before harrowing check all nuts & bolts of the disc harrow.
2. Be vigilant about the tree roots and stones. Don't harrow on stony soil.
3. Tractor should be in first high or fourth low gear.
4. Don't allow anyone to come across the harrow.
5. Before lifting the hydraulic harrow heavy series check the hydraulic couplers (Q.R.C value) & pressure flow properly.
6. Lift the hydraulic harrow heavy series with the help of hydraulic pressure before approaching the road.

## 1.4 SAFETY

Understanding the machine safety labels



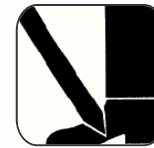
**Safety-Alert Symbol**

The machine safety labels shown in this section are placed in important areas on your machine to draw attention to potential safety hazards

On your machine the words DANGER, WARNING, and CAUTION are used with this safety-alert symbol. DANGER identifies the most serious hazards.

The operator's manual also explains any potential safety hazards whenever necessary.

- Before harrowing with disc harrow take care that nobody stands near it.



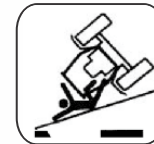
In order to protect yourself always wear adequate clothes and shoes during the operations.



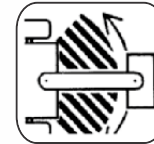
Never use your hands to check hydraulic leaks. Escaping hydraulic oil under pressure may have sufficient force to penetrate the skin causing injury.



Never allow riders on the tractor or implement unless an additional seat is available.



Be careful when moving around steep gradient to avoid sharp turn.



Never transport the implement on rough roads during the night. When operating, avoid sharp turns that may cause tractor colliding with the implement.

## 3. MAINTENANCE

### 3.1 MAINTENANCE INSTRUCTIONS

If you work the hydraulic harrow heavy series on stony land then maintenance also increases.

1. If the soil has entered the grease nipple, then change the nipple.
2. If disc harrow is new after initial working of first two hours, tighten all nuts & bolts.
3. After every fifty hours grease all greasing points with grease gun and tighten all nuts & bolts.
4. After fifty hours, open the bearing hub/bearing spool of hydraulic harrow heavy series & cleanse with diesel oil & pump in new grease.
5. Check hydraulic cylinder oil leakage occasionally.

### 3.2 STORAGE OF MACHINE AFTER WORK

1. Wash the hydraulic harrow heavy series after work.
2. Replace the worn out nuts & bolts.
3. If hydraulic harrow heavy series has to remain unused for long time then clean it & apply a layer of used oil for rust prevention.

These steps will enhance the life of your disc harrow.

### 3.3 LUBRICATION

1. Please take care that the high quality grease is used in the greasing points.
2. Please take care that the high quality hydraulic oil is used in the hydraulic cylinder.



Be careful with the environment. Do not spill combustible oil, battery and filter residues in the soil. These trashes in contact with the soil reach sub layer which directly damage the environment. Look for the information to recycle or re-use them.

### 3.4 INSTRUCTIONS FOR DRIVER

1. In case of scraper touching the discs, loosen the scraper bolt and readjust the scraper.
2. Never reverse the tractor when the harrow is engaged in the soil.
3. Never turn the tractor to the right or left when the harrow is engaged in the soil.
4. Properly fit the drawbar hook duly locked with lynch pin.
5. To get good results from the harrow, disc should be replaced when its diameter is reduced by 5" from its original size.
6. When hydraulic harrow heavy series is ready for use don't stand between harrow & the tractor.

### 4. OPERATIONAL GUIDELINES FOR HARROW

1. Adding of wheel weights/water ballasting or combination of both is recommended when excessive rear wheel slippage is experienced.
2. Adjust internal /external check chains to obtain implement swing range within 50 mm (2") when raised.
3. Always maintain the correct tyre pressure to avoid wheel slippage.
4. Always set hydraulic levers correctly for draft and position control operation.

**The following settings are necessary to ensure that uniform working depth is maintained**

#### a.) Side Draft

The hydraulic harrow heavy series will trail correctly behind the tractor provided the side thrust of the front gang is equal to that of rear. In case it is different there will be side draft. To set it correctly, the gang angle should be changed.

#### b.) Severe Side Draft

In case of severe side draft the cutting depth of rear disc gang should be increased or decreased.

#### Precautions during transportation

1. When transporting lift the harrow on tyres.
2. Set hydraulic levers in top raised position and lock levers.
3. Maintain the speed to avoid jumps.
4. Watch while over taking on road.
5. Always use SMV (Slow Moving Vehicles) symbols.



**Dear user!**  
**Respect the Ecology.**  
**Do not throw the trash away.**  
**This gesture helps to protect our Environment.**

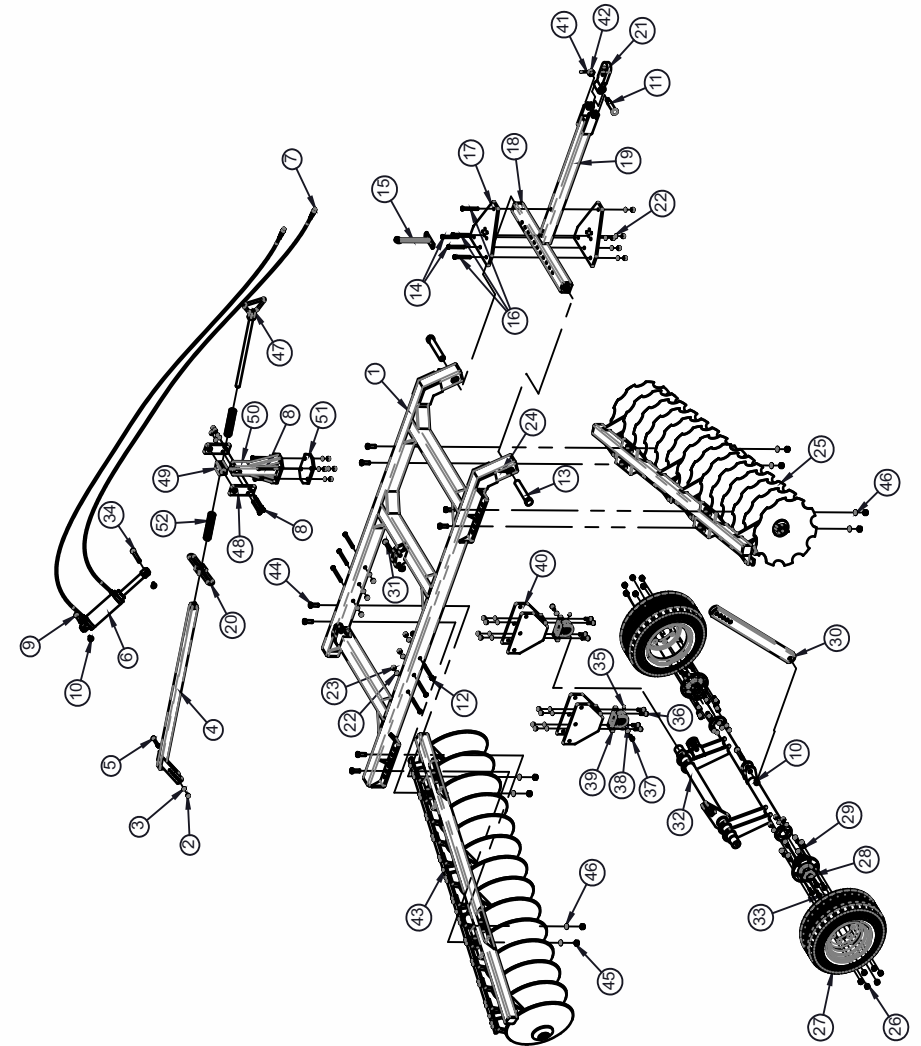
## 5. TROUBLE SHOOTING CHART

SR. NO.	POSSIBLE CAUSES	POSSIBLE REMEDIES
<b>A. Side Draft</b>		
1.	Disc not running level	Adjust using leveling lever
2.	Gangs improperly angled	Set the gangs
3.	Too much left hand offset.	By adjusting the drawbar plate bolt
<b>B. Excessive field slippage</b>		
1.	Tractor overloaded	Reduce angle, reduce depth.
2.	Not enough tractor ballast	Add wheel weight or liquid
<b>C. Not filling the furrow</b>		
1.	Too much left hand offset	By adjusting the drawbar
2.	Tractor wheel running in furrow enlarging it	Drive the tractor in un worked ground
3.	Disc too far from furrow	Keep the left front discs in furrow
4.	Rear gang set wrong, laterally.	By adjustment of gang box angle
<b>D. Poor penetration</b>		
1.	Hard ground	Increase angle between front and rear gang.
<b>E. Disc unsteady</b>		
1.	Too much angle in gang	Reduce the gang angle
<b>F. Gang clogging</b>		
1.	Field too wet.	Disc at shallow depth for first pass to speed up drying process.
2.	Gang set in maximum angle.	Reduce the angle
3.	Not using scrapers	Install scrapers.
4.	Scrapers worn out or not set properly.	Replace worn ones. Adjust scrapers close to the disc
5.	Disc is too deep in damp soil	Reduce penetration

## 6. PARTS CATALOGUE

1. Hydraulic Harrow Heavy Series
2. Hydraulic Harrow Heavy Series With Crumbler

Hydraulic Harrow Heavy Series												
SrNo.	Description	Part Code					Quantity					
		9X9	10X10	11X11	12X12	14X14	16X16	9X9	10X10	11X11	12X12	14X14
1	HYDRAULIC HARROW FRAME ASSEMBLY	74800002			74430001		1					
2	NYLOCK NUT M16x2P	10280005					24					
3	SPRING WASHER 16MM	10270005					26					
4	REAR GANG ASS. WITH GANG BOX & SCRAPER	76070008					1					
5	HEX HEAD BOLT M16X120X2MM	10260455					1					
6	HYDRAULIC CYLINDER ASSY	10450001					10450012	1				
7	HOSE PIPE ASSEMBLY	74600001					2					
8	HEX HEAD BOLT 16X160X2MM	10260406					7					
9	PIN 25X100MM	10020069					1					
10	LINCH PIN 10MM	10020022					4					
11	PIN	79480006					1					
12	HEX HEAD BOLT M18X180X2.5MM	10260156					6					
13	PIN 50X280MM	10020053					2					
14	HEX HEAD BOLT 18X170X2.5MM	10260226					2					
15	SPRING MOUNTING PIPE ASSY.	79220011					1					
16	HEX HEAD BOLT 18X160X2.5MM	10260207					3					
17	BEARING HUB ASSEMBLY	74520001					2					
18	CENTER LINK PIPE ASSEMBLY	74810001					74440001	1				
19	DRAWBAR ASSEMBLY	74450001					1					
20	THREADED BUSH ASSY.	79220008					1					
21	HOOK ASSEMBLY + BRACKET ASSY.	10560001 + 74450013					1					
22	SPRING WASHER 18MM	10270006					11					
23	NYLOCK NUT M18X2.5MM	10280020					11					
24	SPRING PIN M10X75MM	10020082					2					
25	FRONT GANG ASS. WITH GANG BOX & SCRAPER	76070006	76070005	76070004	72070007	76070003	74610001	1				
26	HUB NUT 22X11G 5/8	10280061					12					
27	TYRE WITH RIM ASSEMBLY	11030024 / 11030028 / 11030026					2					
28	TYRE HUB ASSEMBLY	74500001					2					
29	HUB BOLT 22X11G 5/8 X 70MM	10260227					12					
30	TYRE SYSTEM LOCKING ASSEMBLY	75580001					1					
31	PIN 25X125MM	10020070					2					
32	TYRE SYSTEM ASSEMBLY	74820001					74490001	1				
33	HEX HEAD BOLT M16X55X2MM	10260204					8					
34	PIN 25X152MM	10020088					1					
35	GREASE NIPPLE M10X15X1.5MM	10300005					12					
36	HEX HEAD BOLT 16X65X2MM	10260017					8					
37	HEX HEAD BOLT M16X40X2MM	10260120					2					
38	CENTER SUPPORT HUB AXLE LOCK PLATE	74530004					2					
39	AXLE HUB	10090035					2					
40	AXLE HUB MOUNTING ASSEMBLY	74480001					2					
41	SPLIT PIN 4MMX55MM	10020054					1					
42	CASTLE NUT M30X3.5M	10280019					1					
43	REAR GANG ASS. WITH GANG BOX & SCRAPER	76070011	76070010	76070009	76070008	76070007	76070002	1				
44	HEX HEAD BOLT M24X90X3MM	10260469					8					
45	HEX HEAD BOLT 16X160X2MM	10260075					8					
46	SPRING WASHER 24MM	10270027					8					
47	THREADED ROD ASSY.	79220022					1					
48	SPRING MOUNTING FLAT	79220005					2					
49	THREAD ROD BUSH	79220021					1					
50	COIL SPRING BRACKET ASSY	79220001					1					
51	BASE PLATE SPRING ATTACHMENT	79220002					1					
52	SPRING	10210025					2					

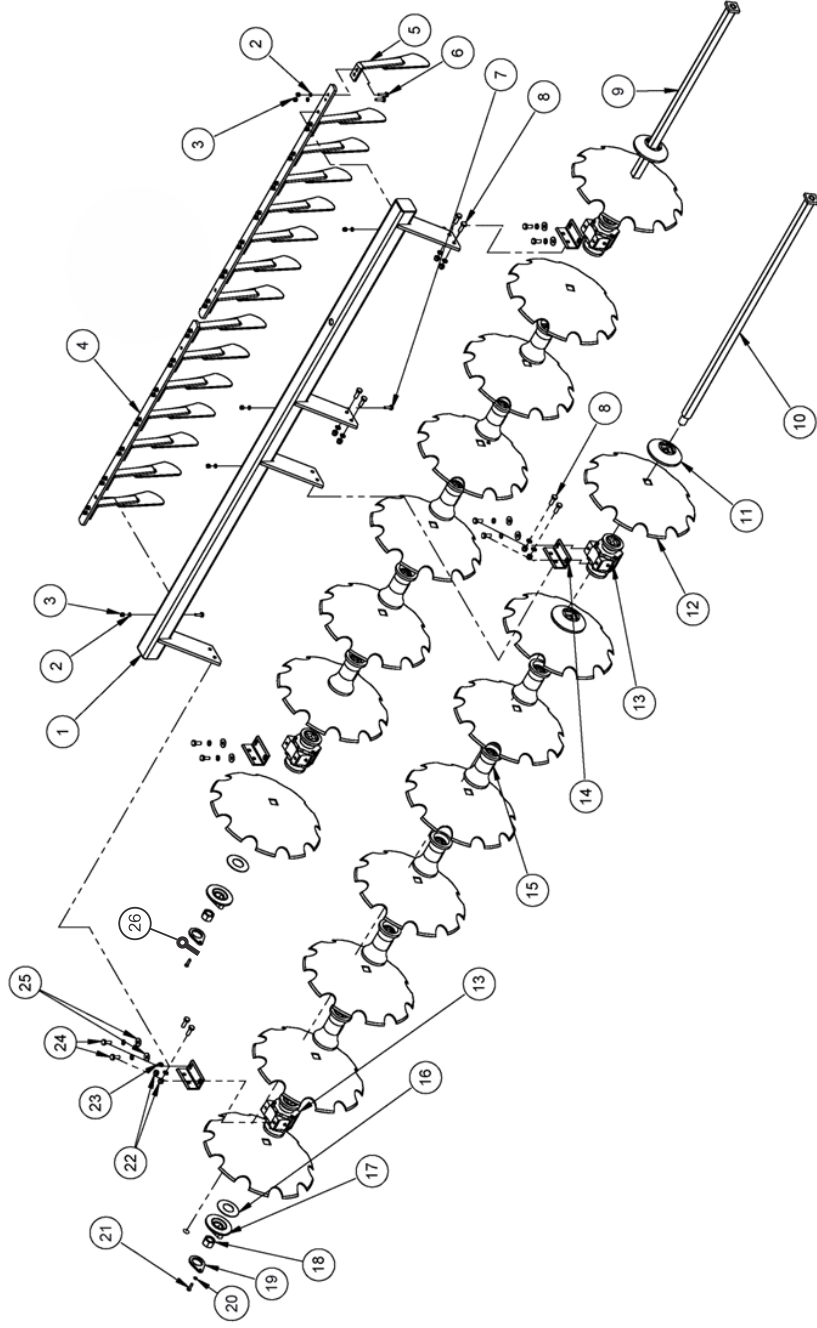


HYDRAULIC HARROW HEAVY SERIES



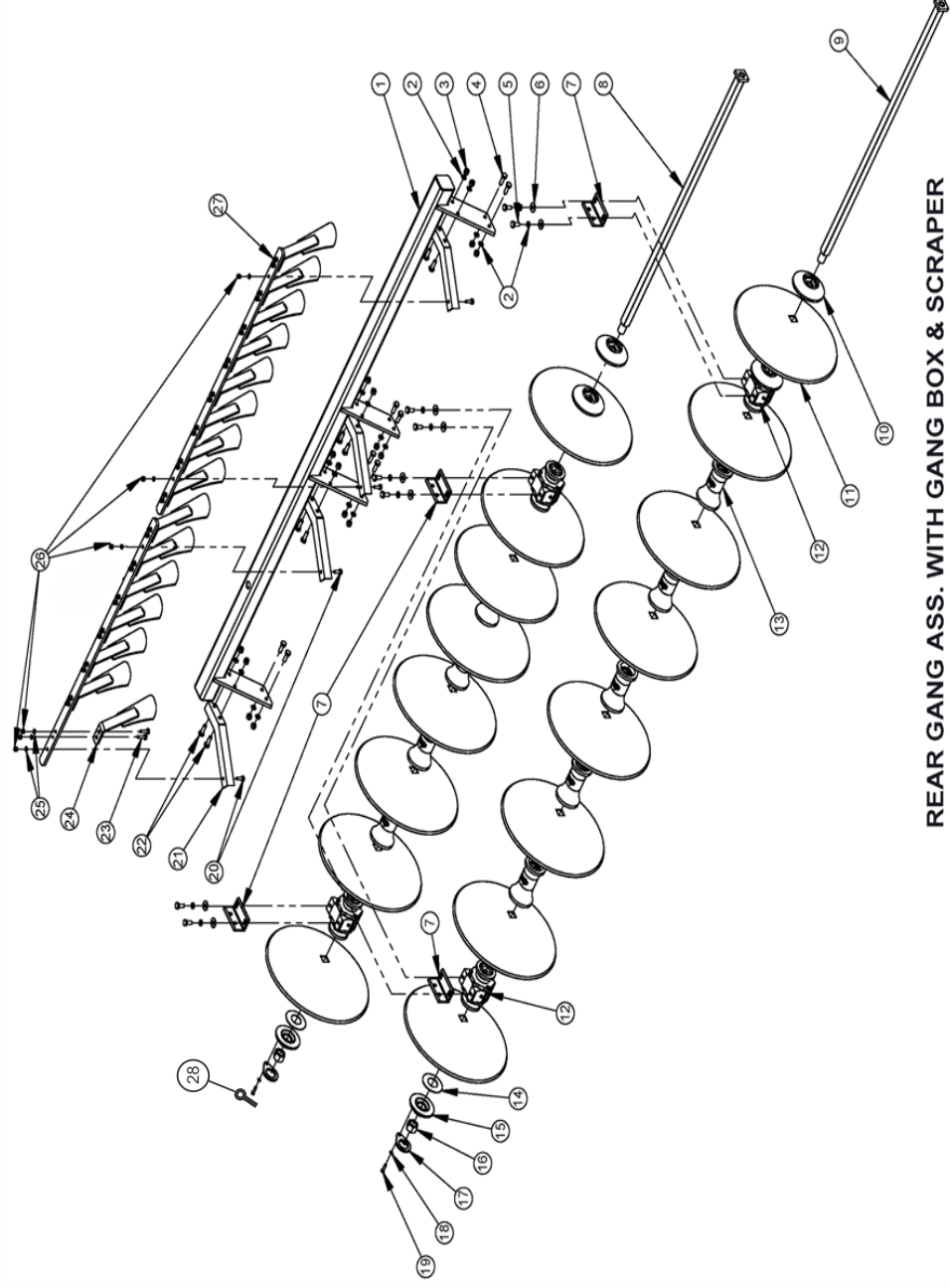
FRONT GANG ASS WITH GANG BOX SCRAPER

Sr No.	Description	Part Code						Quantity						
		9X9	10X10	11X11	12X12	14X14	16X16	9X9	10X10	11X11	12X12	14X14	16X16	
1	GANG BOX FRONT ASSEMBLY	74840001	74870001	74900001	74930001	75000001	74460001							
2	SPRING WASHER 12MM			10270003				11	13	14	15	17	19	
3	NYLOCK NUT M12X1.75			10280025				11	13	14	15	17	19	
4	SCRAPER HOLDING FLAT ASSY.	74860022	74860023	74860024	74860025	74860026	74860027							
5	SCRAPPER ASSEMBLY FRONT			74540001				8	9	10	11	13	15	
6	HEX HEAD BOLT M12X80X1.75MM			10260447				5	6	6	8	11	11	
7	HEX HEAD BOLT M12X70X1.75MM			10260064				8	9	10	11	13	15	
8	HEX HEAD BOLT M16X50X2MM			10260358				6						
9	HEX HEAD BOLT M16X55X2MM			10260454				6						
10	SQ. AXLE ASSEMBLY	74830001	74890001	74920001	74920001	75080001	74530001	1	2	1	2	2	2	
11	BIG CHAPPAN 40MM SQUARE			10360006				1						
12	NOTCHED DISC 26"X6MM			10240041				9	10	11	12	14	16	
13	BEARING HUB ASSEMBLY			74520001				3						
14	HUB ANGLE			74530007				3						
15	PLAIN SPOOL 42 SQ. (9")			10340018				5	4	5	6	8	10	
16	DISC WASHER 127X3MM (T)			10270022				1						
17	SMALL CHAPPAN			10360007				1						
18	PLAIN NUT 40MM			10280050				1						
19	GANG LOCK PLATE			74830003				1						
20	SPRING WASHER 10MM			10270002				1						
21	HEX HEAD BOLT 10X35X1.5 MM			10260053				1						
22	NYLOCK NUT M16X2MM			10280005				6						
23	SPRING WASHER 16MM			10270005				14						
24	HEX HEAD BOLT M16X40X2MM			10260120				6						
25	PLAIN WASHER 16MM			10270020				6						
26	SPLIT PIN 4MMX65MM (L)			10020055				1						



FRONT GANG ASS. WITH GANG BOX & SCRAPER

REAR GANG ASS. WITH GANG BOX SCRAPER													
Sr. No.	Description	Part Code								Quantity			
		9X9	10X10	11X11	12X12	14X14	16X16	9X9	10X10	11X11	12X12	14X14	16X16
1	GANG BOX REAR ASS.	74850001	74870001	74910001	74940001	75070001	74470001					1	
2	SPRING WASHER 16MM			10270005				22				24	
3	NYLOCK NUT M16x2P			10280005				14				16	
4	HEX BOLT M16x55x2P			10260204				6				8	
5	HEX BOLT M16x40x2P			10260120				6				8	
6	PLAIN WASHER 16MM			10270020				6				8	
7	HUB ANGLE			74530007				3				4	
8	SQ. AXLE ASSEMBLY	74830001	74890001	74530001	74530001	75080001	74530001	2	2	1	2	2	2
9			74890001						1	1			
10	BIG CHAPPEN			10360006							2		
11	PLAIN DISC 26" (SQ. HOLE-42MM)			10240034				9	10	11	12	14	16
12	BEARING HUB ASSEMBLY			74520001				3				4	
13	PLAIN SPOOL 42 SQ. (9")			10340018				5	4	5	6	8	10
14	DISC WASHER			10270022				1				2	
15	SMALL CHAPPEN			10360007				1				2	
16	PLAIN NUT 40XGG1 3/8 1 1/2 P. (BSW THREAD)			10280050				1				4	
17	GANG LOCK PLATE			74830003				1				2	
18	SPRING WASHER 10MM			10270002				1				2	
19	HEX HEAD BOLT M10x35x1.5P			10260053				1				2	
20	HEX BOLT M12x80x1.75P			10260447				3				4	
21	REAR SUPPORT HOLDING BEND ANGLE			74550004				3				4	
22	HEX BOLT M16X50X2P			10260358				3				4	
23	HEX BOLT M12X70X1.75P			10260407				8	9	10	11	13	15
24	SCRAPER ASSY. REAR			74550001				8	9	10	11	13	15
25	SPRING WASHER 12MM			10270003				11	13	14	15	17	19
26	NYLOCK NUT M12x1.75P			10280025				11	13	14	15	17	19
27	SCRAPER HOLDING FLAT ASSY.	74860022	74860023	74860024	74860025	74860026	74860027					1	
28	SPLIT PIN Ø4x65L			10020055								1	

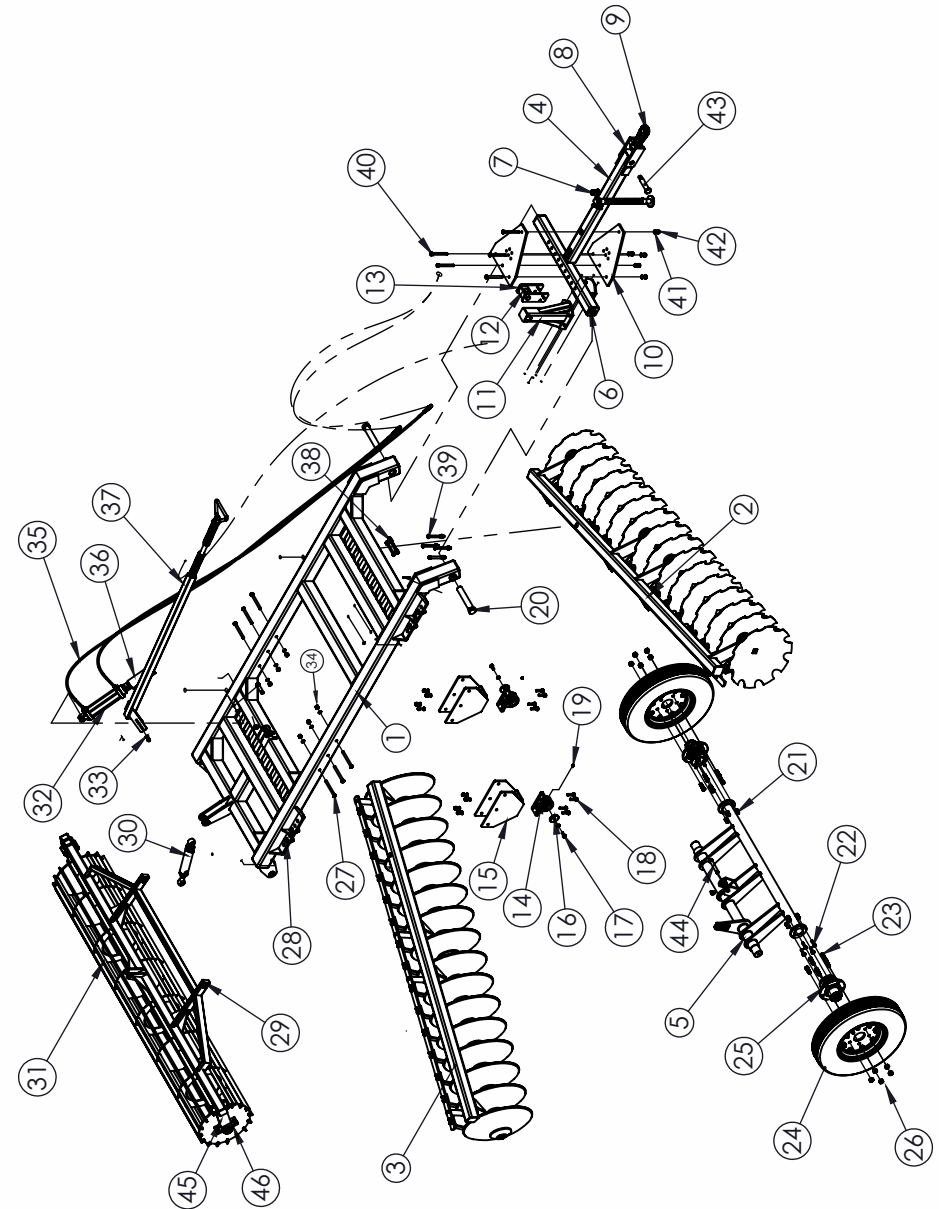


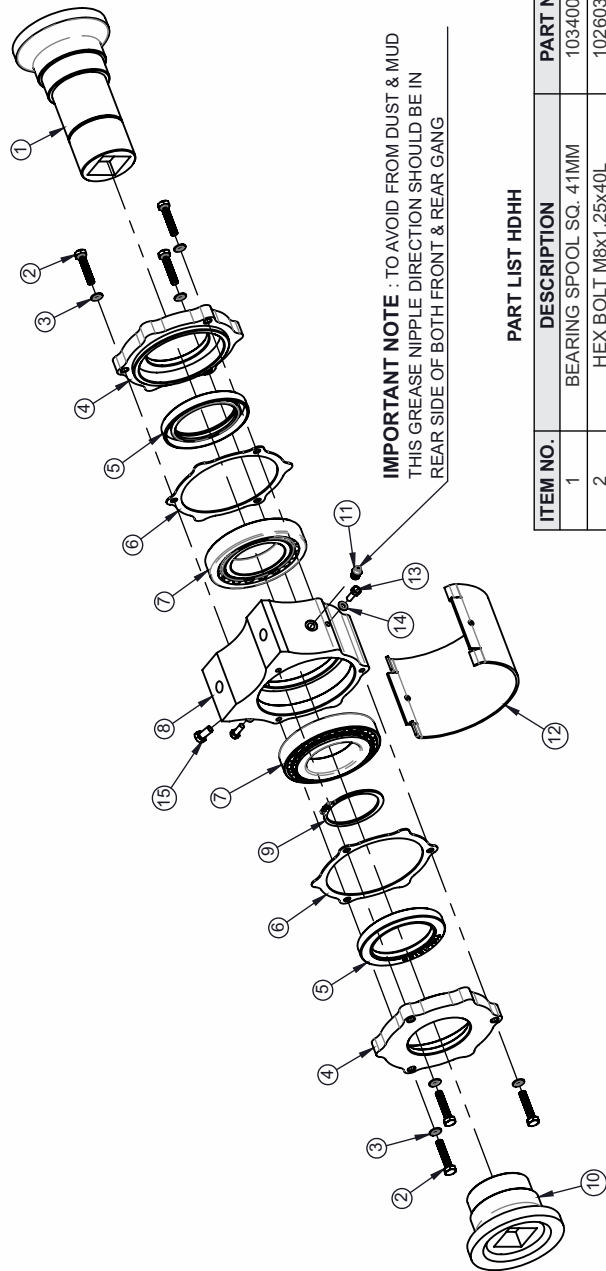
REAR GANG ASS. WITH GANG BOX & SCRAPER

### HYDRAULIC HARROW HEAVY SERIES WITH CRUMBLER

ITEM NO.	DESCRIPTION	PART NUMBER			QTY.		
		9x9	11x11	14x14	9x9	11x11	14x14
1	MAIN FRAME ASSEMBLY	74800004		74800005	1		
2	FRONT GANG BOX ASSEMBLY	74840001	74900001	75000001	1		
3	REAR GANG BOX ASSEMBLY	74850001	74910001	75070001	1		
4	DRAWBAR ASSEMBLY	74450001			1		
5	TYRE SET ASSEMBLY	74820001		74490001	1		
6	CENTER LINK PIPE ASSEMBLY	74810001		74440001	1		
7	PARKING STAND ASSEMBLY	75890002			1		
8	HOOK BKT ASSEMBLY	74450013			1		
9	HOOK ASSEMBLY	79480018			1		
10	DRAWBAR JOINT PLATE	74810003		74530005	2		
11	COIL SPRING BKT ASSEMBLY	79220001			1		
12	COIL SPRING BKT BUSH	79220026			1		
13	COIL SPRING BKT ASSEMBLY SIDE PLATE	79220005			2		
14	AXLE TYRE HUB	10090035			2		
15	AXLE HUB MOUNTING ASSEMBLY	74480001		74480005	2		
16	HUB AXLE LOCK PLATE	74530004			2		
17	HEX HEAD BOLT M16X40X2MM	10260374			2		
18	HEX HEAD BOLT M16x65x2P	10260378			8		
19	GREASE NIPPLE M10x1.25P	10300005			2		
20	PIN 50X280L	10020053			1		
21	NYLOCK NUT M16x2P	10280005			19		
22	HEX HEAD BOLT M16x55	10260454			8		
23	HUB BOLT	10260277			12		
24	TYRE ASSEMBLY	11030024/11030028/11030026			1		
25	TYRE HUB ASSEMBLY	74500001			2		
26	HUB NUT	10280061			12		
27	HEX HEAD BOLT M18x190L	10260156			6		
28	HEX HEAD BOLT M24x90x3P	10260469			8		
29	CRUMBLER HOLDING PIPE ASSEMBLY	79740038	79740040	79740027	1		
30	HYDRAULIC CYLINDER	10450015			1		
31	MAIN CRUMBLER ASSEMBLY	79740039	79740049	79740026	1		
32	MAIN HYDRAULIC CYLINDER	10450040		10450042	1		
33	SPRING WASHER 16MM	10270005			19		
34	NYLOCK NUT M18x2P	10280020			6		
35	HOSE PIPE ASSEMBLY	74600006			1		
36	CYLINDER STROKE CONTROL SEGMENTS	10301131			1		
37	SPRING MOUNTING PIPE ASSEMBLY	79220011			1		
38	HEX HEAD BOLT M16x160x2P	10260406			3		
39	HEX HEAD BOLT M20x170x2.5P	10260319			4		
40	HEX HEAD BOLT M20x160x2.5P	10260402			5		
41	SPRING WASHER 20MM	10270016			9		
42	NYLOCK NUT M20x2.5P	10280021			9		
43	PIN (HYDRAULIC HARROW)	79480006			1		
44	PIN Ø25x130L	10020036			6		
45	CRUMBLER MOUNTING SIDE PLATE ASSY.	79740035			2		
46	UCP BEARING 210	10050143			2		

HYDRAULIC HARROW HEAVY SERIES WITH CRUMBLER

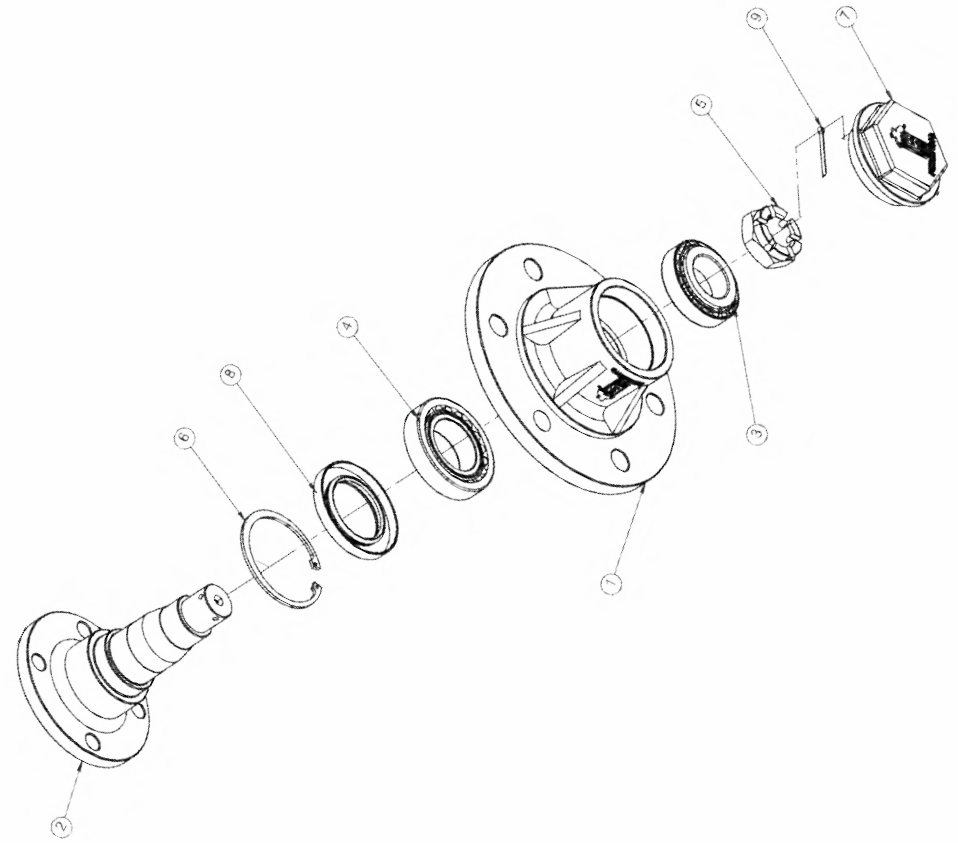




**PART LIST HDHH**

ITEM NO.	DESCRIPTION	PART NO.	QTY.
1	BEARING SPOOL SQ. 41MM	10340017	1
2	HEX BOLT M8x1.25x40L	10260373	6
3	SPRING WASHER 8MM	10270001	6
4	BEARING HUB COVER	10150016	2
5	OIL SEAL 80x110x13T	10010020	2
6	BEARING HUB GASKET	10040048	2
7	BEARING-30214	10050040	2
8	BEARING HUB	10090031	1
9	CIRCLIP EXTERNAL 70A	10390012	1
10	BEARING SPOOL CAP SQ. 41MM	10180021	1
11	GREASE NIPPLE 10MM	10300089	1
12	HUB SAFETY COVER	79590001	1
13	ALLEN BOLT M6X12	10260178	2
14	SPRING WASHER 6MM	10270033	2
15	HEX HEAD BOLT M8x16x1.25P	10260779	1

**BEARING HUB ASSEMBLY**



**TYRE BEARING HUB ASSEMBLY**

Sr. No.	Description	Part No.	Quantity
1	TYRE BEARING HUB	10090019	1
2	TYRE AXLE SHAFT	10290041	1
3	BEARING 32209	10050013	1
4	BEARING 32211	10050009	1
5	CASTLE NUT M36X2P	10280071	1
6	INTERNAL CIRCLIP B100 4 MM THK.	10390007	1
7	TYRE BEARING HUB CAP	10180020	1
8	OIL SEAL 65X100X12	10010027	1
9	SPLIT PIN 4MMX55MM (L)	10020054	1

## DELIVERY CHECKLIST

Dealer Pre-Delivery (Please Tick)	Please Complete all Dealer information Below
<p><b>1. Dealer Pre-Delivery Checklist</b></p> <ol style="list-style-type: none"> <li>1. The customer or person responsible has been given the operator's manual.</li> <li>2. The customer undertakes to read the complete operator's manual and understands all aspects of the manual before operation of the machine.</li> <li>3. All safety, operational and maintenance information have been explained and demonstrated.</li> <li>4. All greasing and oil points, stickers, guarding and ID plate have been identified and physically pointed out.</li> <li>5. The customer agrees that it is his responsibility to read and carry out the safety, maintenance and operation as per this operator's manual.</li> </ol>	<p><b>Dealer Information</b></p> <p>Dealer's Name.....</p> <p>Address.....</p> <p>State..... Postcode.....</p> <p>Phone..... Fax.....</p> <p>Email.....</p> <p>Service Person.....</p> <p>I confirm that the pre-delivery service was performed on this machine.</p> <p>Signature.....</p> <p>Date.....</p> <p>Comments.....</p>
Customer Delivery (Please Tick)	Please Complete all Customer Information Below
<p><b>2. Customer Delivery Checklist</b></p> <ol style="list-style-type: none"> <li>1. The customer or person responsible has been given the operator's manual.</li> <li>2. The customer undertakes to read the complete operator's manual and understands all aspects of the manual before operation of the machine.</li> <li>3. All safety, operational and maintenance information have been explained and demonstrated.</li> <li>4. All greasing and oil points, stickers, guarding and ID plate have been identified and physically pointed out.</li> <li>5. The customer agrees that it is his responsibility to read and carry out the safety, maintenance and operation as per this operator's manual.</li> </ol>	<p><b>Customer Information</b></p> <p>Customer's Name.....</p> <p>Address.....</p> <p>State..... Postcode.....</p> <p>Phone..... Fax.....</p> <p>Email.....</p> <p>Delivery Person.....</p> <p>I confirm that all of the delivery checks were explained and performed.</p> <p>Signature.....</p> <p>Delivery Date.....</p> <p>Comments.....</p>

# FIELDKING

## WARRANTY CARD Customer Copy

CUSTOMER NAME Mr./ Mrs. :

ADDRESS :

MOBILE NO. :

Email :

NAME OF IMPLEMENT :

MODEL NO. :

YEAR OF Mfg. :

SERIAL NO. :

REGISTRATION NO. :

DATE OF PURCHASING :

NAME OF DEALER :

Customer's Signature

Dealer's Signature



**Beri Udyog Pvt. Ltd.**

**Corporate Office** : Plot No. 235-236 & 238-240, Sec-3, HSIIDC,  
 Karnal- 132001 (Haryana), India ☎ +91-184-2221571/ 72/ 73  
 ✉ marketing@fieldking.com, exports@fieldking.com, 🌐 www.fieldking.com

# FIELDKING

## WARRANTY CARD Company Copy

CUSTOMER NAME Mr./ Mrs :

ADDRESS :

MOBILE NO. :

Email :

NAME OF IMPLEMENT :

MODEL NO. :

YEAR OF Mfg. :

SERIAL NO. :

REGISTRATION NO. :

DATE OF PURCHASING :

NAME OF DEALER :

Customer's Signature

Dealer's Signature



**Beri Udyog Pvt. Ltd.**

**Corporate Office :** Plot No. 235-236 & 238-240, Sec-3, HSIIDC,  
Karnal- 132001 (Haryana), India ☎ +91-184-2221571/ 72/ 73

✉ marketing@fieldking.com, exports@fieldking.com, 🌐 www.fieldking.com

# FIELDKING

## WARRANTY CARD

Dealer Copy

CUSTOMER NAME Mr./ Mrs :

ADDRESS :

MOBILE NO. :

Email :

NAME OF IMPLEMENT :

MODEL NO. :

YEAR OF Mfg. :

SERIAL NO. :

REGISTRATION NO. :

DATE OF PURCHASING :

NAME OF DEALER :

Customer's Signature

Dealer's Signature



**Beri Udyog Pvt. Ltd.**

**Corporate Office :** Plot No. 235-236 & 238-240, Sec-3, HSIIDC,  
Karnal- 132001 (Haryana), India

☎ +91-184-2221571/ 72/ 73  
✉ marketing@fieldking.com, exports@fieldking.com, 🌐 www.fieldking.com