

FIELDKING

Jumbo Fixed Mould Board Plough



➤ [Operator Manual](#) ➤ [Service Manual](#) ➤ [Part Catalogue](#)

CONGRATULATIONS!

You have invested in one of the best implements of its type in the market today.

The care you give your "FIELDKING" implement will greatly determine your satisfaction with its performance and its service life. A careful study of this manual will give you a thorough understanding of your new implement before operating.

If your manual is lost or destroyed, "FIELDKING" will be glad to provide you a new copy. Visit to nearest dealership & get a copy. Most of our manuals can also be downloaded from our website at www.fieldking.com.

As an authorized "FIELDKING" dealer, we stock genuine "FIELDKING" parts which are manufactured with the same precision and skill as our original equipment. Our trained service persons are well informed on methods required to service "FIELDKING" equipments and are ready to help you.

Should you require additional information or assistance, please contact us.

YOUR AUTHORIZED

FIELDKING DEALER

BECAUSE "FIELDKING" MAINTAINS AN ONGOING PROGRAMME OF PRODUCT IMPROVEMENT, WE RESERVE THE RIGHT TO MAKE IMPROVEMENTS IN DESIGN OR CHANGE IN SPECIFICATION WITHOUT INCURRING ANY OBLIGATION TO INSTALL THEM ON UNITS PREVIOUSLY SOLD. BECAUSE OF THE POSSIBILITY THAT SOME PHOTOGRAPHS IN THIS MANUAL WERE TAKEN OF PROTOTYPE MODELS, PRODUCTION MODELS MAY VARY IN SOME DETAIL. IN ADDITION, SOME PHOTOGRAPHS MAY SHOW SHIELDS REMOVED FOR THE PURPOSE OF CLARITY. NEVER OPERATE THIS IMPLEMENT WITHOUT ALL SHIELDS IN PLACE.

TO THE PURCHASER

This manual contains valuable information about your new "FIELDKING" Jumbo Fixed Mould Board Plough. It has been carefully prepared to give you helpful suggestions for operating, adjusting, servicing and ordering spare parts.

Keep this manual in a convenient place for quick and easy reference. Study it carefully. You have purchased a dependable and sturdy Jumbo Fixed Mould Board Plough but only by proper care and operation you can expect to receive the service and long life designed and built into it.

Sometime in the future your Jumbo Fixed Mould Board Plough may need new parts to replace which are worn out or broken. If so, go to your dealer and provide him equipment's detail like model and part number.

CUSTOMER INFORMATION

Name _____

Purchased From _____

Date of Purchase _____

Model No. _____

Serial No. _____

PURCHASER / OPERATOR'S RESPONSIBILITY

1. Read and understand the information contained in this manual.
2. Operate, lubricate, assemble and maintain the equipment in accordance with all instructions and safety procedures in this manual.
3. Inspect the equipment and replace or repair any parts that are damaged or worn out which under continued operation would cause damage, wear to other parts, or cause a safety hazard.
4. Return the equipment or parts to the authorized "FIELDKING" dealer, from where it was purchased, for service or replacement of defective parts that are covered by warranty. (The "FIELDKING" Factory may inspect equipment or parts before warranty claims are honored.)
5. All costs incurred by the dealer for traveling to or transporting the equipment for warranty inspection and claims will be borne by the customer.

INDEX

- 1. TECHNICAL DATA**
 - 1.1 Introduction
- 2. USAGE INSTRUCTIONS**
 - 2.1 Before Use
 - 2.2 Attaching Plough to the tractor
 - 2.3 Note
- 3. TRACTOR PREPARATION**
 - 3.1 Instructions for tractor preparation
 - 3.2 Adjustments
 - 3.3 Warning for driver
 - 3.4 Danger
 - 3.5 Draft of the Jumbo Fixed Mould Board Plough
 - 3.6 Adjustments for deeper ploughing
- 4. MAINTENANCE**
 - 4.1 Maintenance Instructions
 - 4.2 Storage of Machine after work
 - 4.3 Instruction for Driver
- 5. PREPARATION FOR WORK**
 - 5.1 Preparing the tractor
 - 5.2 Hitching The Tractor
 - 5.3 Adjustments and Operations
- 6. ADJUSTMENTS AND OPERATIONS**

1. TECHNICAL DATA

1.1 INTRODUCTION

This handbook contains the use and maintenance instructions with a list of the spare parts of the Jumbo plough.

This Jumbo plough is equipped with heavy-duty box frame specially designed for deep ploughing/land preparation of rough soil. It is designed to work in all types of soil for basic functions such as soil breaking, soil raising and soil turning. It can handle the toughest ploughing job with outstanding penetration performance.

Regular and satisfactory operations together with economic and long lasting use of the implement depend on the compliance with instructions given in this handbook.

Compliance with the instructions in this handbook is also important since Manufacturer declines all and every responsibility for damage to persons or property caused by negligence and failure to comply with these instructions.

2. USAGE INSTRUCTIONS

2.1 BEFORE USE

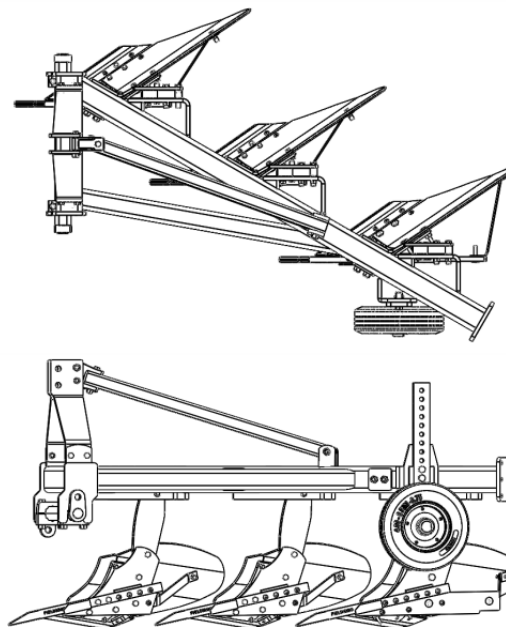
Before mounting the Jumbo plough make sure that all nuts and bolts are properly secured.

2.2 ATTACHING THE PLOUGH TO THE TRACTOR

1. Place the plough duly leveled on even land.
2. Bring the tractor backwards to the plough(don't drag the plough towards the tractor).
3. Attach the left arm of the tractor to the plough first.
4. Attach the central arm to the plough. To attach, turn the screws on both sides to an equal length. If the arm is too short or too long, turn the screw to adjust both simultaneously until aligned with the hole on the central arm.
5. To attach the lower right arm, turn the screw until the mounting pin is at the same level as the hole on the tractor arm. If the gap between hole and mounting pin is too close or too distant, turn the control arm in or pull it away to an appropriate distance respectively. You may have to adjust both height and distance at the same time. When the hole at tractor arm and mounting pin are at even levels, insert the pin in the hole and lock it with the lynch pin.
6. After attaching the plough lift it and adjust the control arm parallel to the ground. When you look from both rear or sideways, the points should all be touching the ground uniformly.

2.3 NOTE:-

The plough will work best when the right wheel of the tractor is inside the previously ploughed furrow i.e. when the plough will be in one of the furrow. Readjust the plough alignments if need be. The first bar point will pick up a lot or a little soil depending on how far or near the rear wheel is to the furrow respectively.



3. TRACTOR PREPARATION

3.1 INSTRUCTIONS FOR TRACTOR PREPARATION

The following are typical instructions for preparing a tractor for operation.

1. The horsepower of tractor selected should match that of the implement.
2. Adjust the front and rear wheel track width.
3. Provide adequate front end ballast for tractor stability.
4. All plough adjustment should be carried out.
5. Select load and depth control setting according to tractor operator's manual.

3.2 ADJUSTMENTS

In order to get better results, the following adjustments are necessary.

1. Cutting Angle Adjustments

Provision is given in the plough standard for the adjustment of the horizontal angle and vertical tilt angle to obtain optimum point operation in various soil conditions. Tilt Angle is the angle which the plain of the cutting edge makes with the vertical line. It

ranges from 100 - 150. Increasing the tilt angle improves point penetration in heavy, sticky soils. Decreasing the tilt angle improves point penetration in loose and brittle soils.

2. Leveling the plough

The level of the plough is controlled by the tractor top link. If the rear end of the plough beam is higher than the front end of the beam, extend the top link. If rear end of the plough beam is lower than the front end, then shorten the top link. Lateral leveling is controlled by adjusting the length of the tractor right lower link. These adjustments must be made with the plough prior to operation.

3.3 WARNING FOR DRIVER

1. Before ploughing check all the nuts and bolts of the Jumbo plough.
2. Don't plough on stony soil.
3. Tractor should be in high first gear.
4. If soil is hard then plough the field at least twice.
5. Lift the Jumbo plough on every turn.
6. Be vigilant about the tree roots and stones.
7. Keep proper distance from Jumbo plough when working.
8. Lift the plough before approaching the road.

3.4 DANGER

Before ploughing with Jumbo plough make sure that nobody stands near it.

3.5 DRAFT OF THE JUMBO FIXED MOULD BOARD PLOUGH

The type of the soil is the greatest external factor to be considered in drafting of any plough. In very hard ground, it is often necessary to add weight to the wheels to force the plough into the soil.

The bearing conditions of the bearing housing will also affect the draft. Keep bearing in smooth conditions i.e. apply the grease whenever necessary.

Draft is affected by the depth and width of cut per bottom for complete plough too. Speed is also another factor which increases the draft, doubling the speed increases the draft by about 20 -25%.

3.6 ADJUSTMENTS FOR DEEPER PLOUGHING

The depth of the plough can be obtained by the position and draft control levers of the tractor hydraulic system. However more depth can be obtained by:

1. Adding extra weight to the plough.
2. Reducing or increasing, as per the soil, the tilt angle. A correctly tilted plough tends to penetrate better.
3. If the ground is covered with trash, set the plough in almost vertical position and add weight to the plough. In such soils notched plough gives better results.

4. MAINTENANCE

4.1 MAINTENANCE INSTRUCTIONS

If you use the Jumbo Fixed Mould Board plough on stony land then maintenance also increases. Please follow these rules to get the best results:

1. If Jumbo Fixed Mould Board plough is new then after first two hours of working tighten all the nut-bolts.
2. Check the plough adjustments if the steering is hard.
3. After every fifty hours of use tighten all nuts and bolts.
4. Regularly check for loose nuts and bolts.
5. Sharpen the bar point and blades if the blades are blunt as they increase the draft considerably.

4.2 STORAGE AFTER WORK

1. Clean the Jumbo Fixed Mould Board plough after work
 2. Replace the worn out nuts and bolts.
 3. If the Jumbo Fixed Mould Board plough is not to be used for long time then apply a layer of used oil for rust prevention after cleaning it.
- These steps will increase the life of your Jumbo Fixed Mould Board plough.

4.3 INSTRUCTION FOR DRIVER

1. When Jumbo Fixed Mould Board plough is ready to use don't stand between Jumbo Fixed Mould Board plough & the tractor.
2. Properly fit the three point linkage as mentioned above & lock with the lynch pin.
3. Never turn or reverse the tractor when the plough is engaged in the soil.

5. PREPARATION FOR WORK

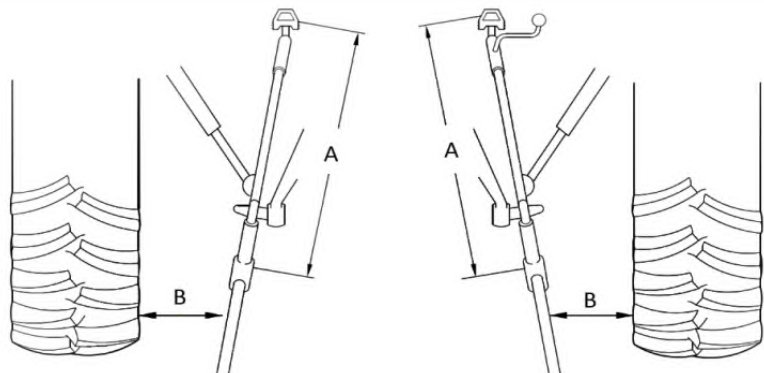
The direction to follow should be politely observed to if obtain the best performance.

5.1 Preparing the tractor

- Check initially the general terms to use of the tractor, mainly regarding the good operation of the hydraulic system (three points). The gauge of the front and rear wheels should be equals (measure taken from the center to center of the tires).
- The ballast addition d'water in the tires, set of weights in the front and in the rear wheels, their are the ways more used to increase the traction in the soil and to give larger stability to the tractor.
- Follow attentively the instructions of the Manuals of the tractor and of the plough for the best both performance.

5.2 Hitching The Tractor

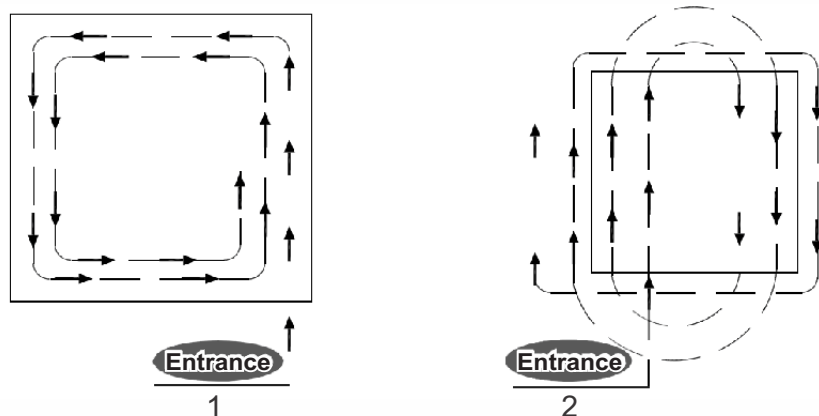
- 1) Hitch "males" of the quick connections in the tractor and check if are clean.
For a perfect hitching, the plough should be centralized with the tractor as per described below:
 - Align the drawbar of the plough along to 3rd point of the tractor
 - Raise completely the plough
 - Check if the distances between the inferiors arms and tires are the same in both sides. (Measure "A") must be leveled (Measure "B").



5.3 Adjustments and Operations

Ways of plough

Independent of format of the ground, the ploughed basically of two ways are done:

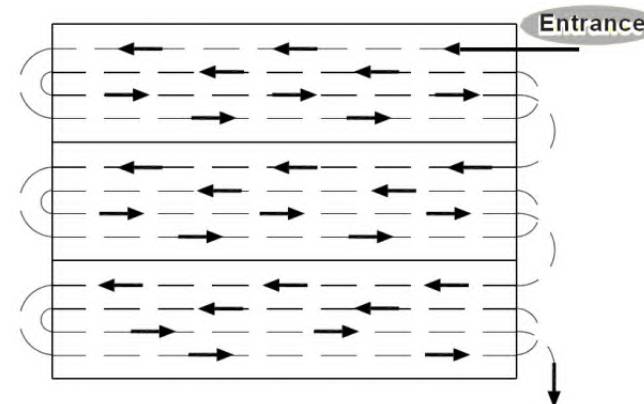


- 1 In the first case, form itself a small at the end of the ploughed furrow, which should be bought at an auction with its own plough, for then even with the barse tandem.
- 2 In the second case, form itself a land portion between channels at the centre of the ground, which should also be lowered with the barse use.

IMPORTANT

In no flat grounds should plough following the level curves and placing the land always upwards.

The ground also can be divided into belts, in other words, is to ploughed by parts, as it shows figure.

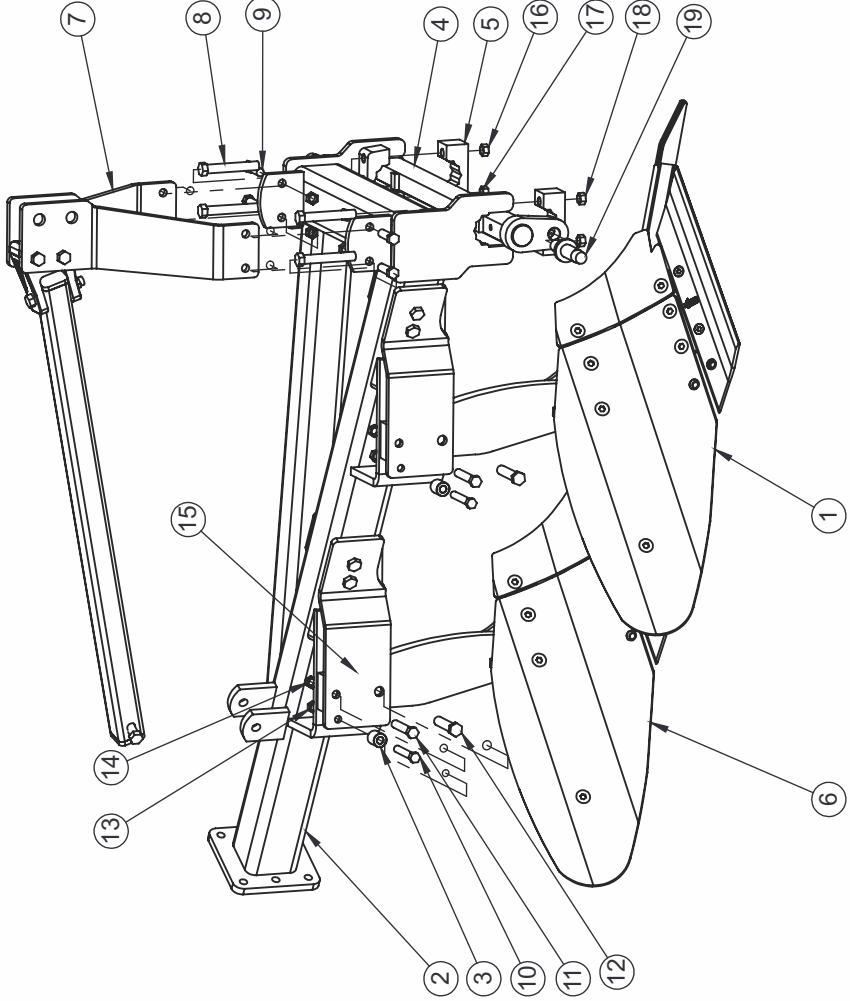


6. Adjustments and Operations

Operations - Important points

- Retighten nut and bolts after first day of operation, as well as check the conditions of all the pins and cotter pins. After retighten every 24 hours of service.
- Observe with attention the lubrication intervals.
- Do always operations controlled and carefully.
- Choice a gear that allows the tractor to keep a certain power reserve, guaranteeing itself against accidental efforts.
- The speed is relative to the gear applied to the tractor and is only determined by the soil conditions. In order to keep the work efficiency and avoid a possible damages to the Plough. It was adapted an average speed of 05 to 06 km/h.
- At operation keep the plough centralized to the tractor and leveled in relation to the soil surface.
- The handles for position and ripple of the hydraulic have basics actions (see with attention instructions shown in the pages 15 and 16). Could vary when the plough is not coupled with the depth wheel (optional) according to the type of the soil.
- Regarding the correct positioning of the tractor, it is enough walk with the right rear wheel close to the wall of the furrow let on previous passed. The variation of this working bearing changes the width of cut of the first mouldboard, must therefore to be very observed.
- When working or transport do not allow passengers on the tractor or on the plough.
- Do the ploughed following the level curves, placing the land always upwards.
- Take out wood pieces or any other object stuck on the mouldboards.
- Only local conditions can determine a better adjust of the plough.

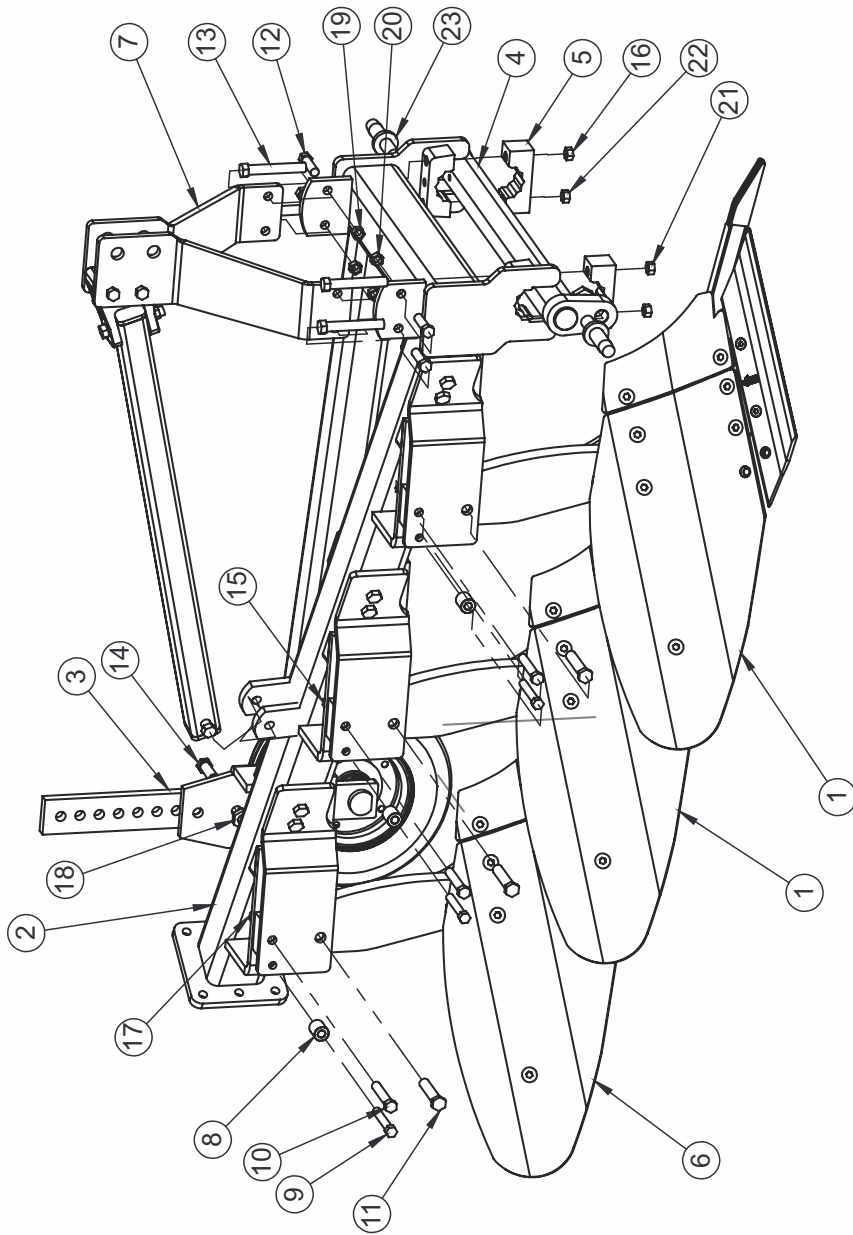
JUMBO FIXED MOULD BOARD PLOUGH (2 BOTTOM)



JUMBO FIXED MOULD BOARD PLOUGH (2 BOTTOM)

SR. NO.	PART NO.	PART NAME	QTY.
1	71200085	FURROW ASSEMBLY 5"	1
2	71180035	FRAME ASSEMBLY	1
3	71200094	BRACKET BUSH	2
4	71600028	DRAW BAR ASSEMBLY	1
5	72150011	"CHANNEL U BLOCK LOWER CLAMP"	2
6	71200095	FURROW ASSEMBLY 8"	1
7	71210025	"THREE POINT LINKAGE ASSEMBLY"	1
8	10260074	"HEX HEAD BOLT M16X140X2MM (5.6 GRADE)"	4
9	10260987	"HEX HEAD BOLT M16X60X2MM"	4
10	10260508	"HEX HEAD BOLT M14X90X2MM (8.8 GRADE)"	2
11	10260418	"HEX HEAD BOLT M16X95X2MM (8.8 GRADE)"	2
12	10260432	"HEX HEAD BOLT M20X90X2.5MM (8.8 GRADE)"	2
13	10280090	NYLOCK NUT M14X2 (P)	2
14	10280005	NYLOCK NUT M16X2MM	10
15	10280021	NYLOCK NUT M20X2.5MM	2
16	10270004	SPRING WASHER 14MM	2
17	10270005	SPRING WASHER 16MM	10
18	10270016	SPRING WASHER 20MM	2
19	10020095	PIN 28X125 MM	2

JUMBO FIXED MOULD BOARD PLOUGH (3 BOTTOM)



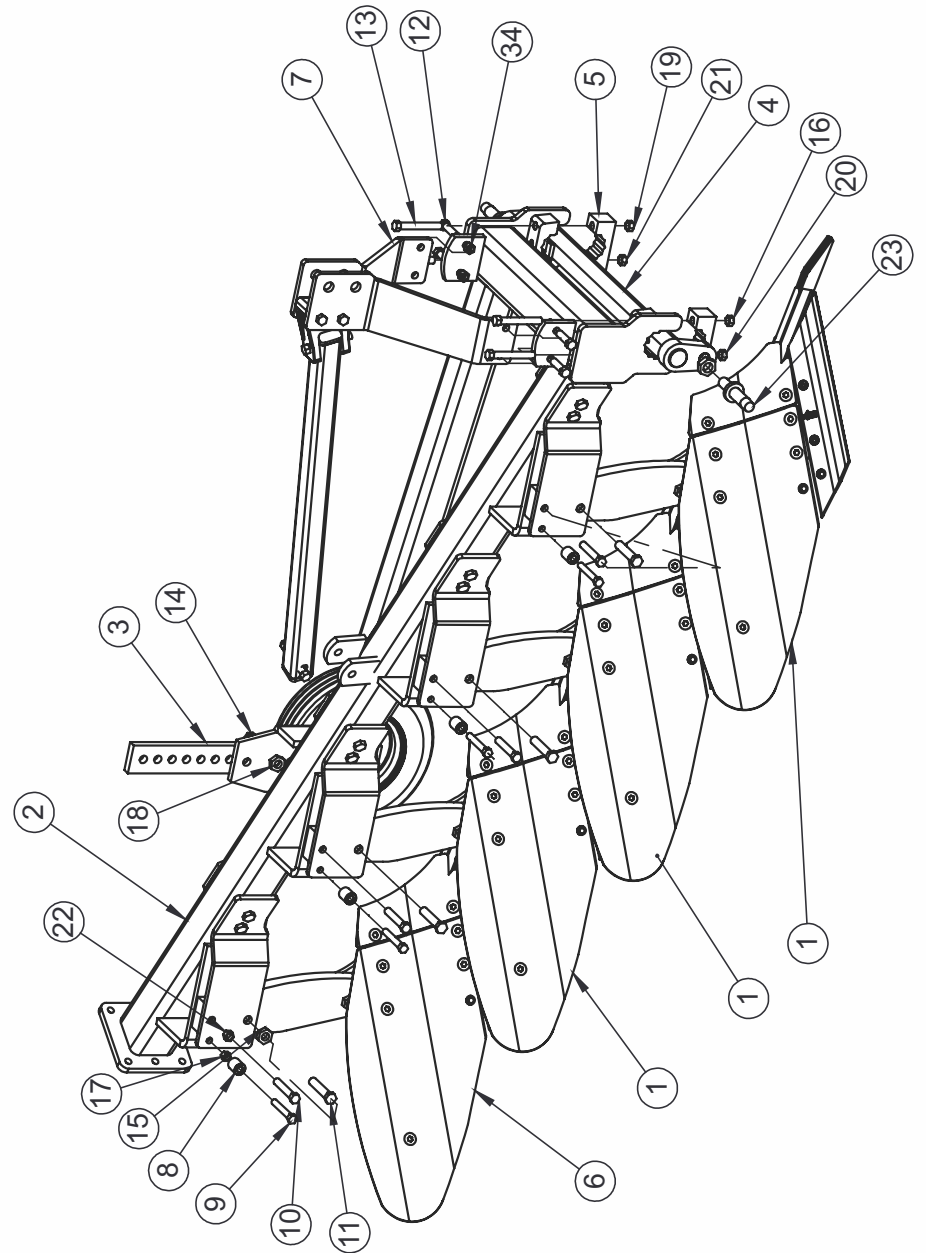
JUMBO FIXED MOULD BOARD PLOUGH (3 BOTTOM)

SR. NO.	PART NO.	PART NAME	QTY.
1	71200085	FURROW ASSEMBLY 5"	2
2	71180016	FRAME ASSEMBLY	1
3	71200096	DEPTH WHEEL ASSEMBLY	1
4	71600028	DRAW BAR ASSEMBLY	1
5	72150011	CHANEL U-BLOCK LOWER	2
6	71200095	FURROW ASSEMBLY WITH 8"	1
7	71210025	"THREE POINT LINKAGE ASSEMBLY"	1
8	71200094	BRACKET BUSH	3
9	10260508	HEX HEAD BOLT M14X90X2MM	3
10	10260432	HEX HEAD BOLT M20X90X2.5MM	3
11	10260418	HEX HEAD BOLT M16X95X2MM	3
12	10260987	HEX HEAD BOLT M16X60X2MM	4
13	10260074	HEX HEAD BOLT M16X140X2MM	4
14	10260084	HEX HEAD BOLT M18X65X2.5MM	2
15	10280021	NYLOCK NUT M20X2.5MM	3
16	10280005	NYLOCK NUT M16X2MM	11
17	10280090	NYLOCK NUT M14X2 (P)	3
18	10280020	NYLOCK NUT M18X2.5MM	2
19	10270005	SPRING WASHER 16MM	11
20	10270016	SPRING WASHER 20MM	3
21	10270006	SPRING WASHER 18MM	2
22	10270004	SPRING WASHER 14MM	3
23	10020095	PIN 28X125 MM	2

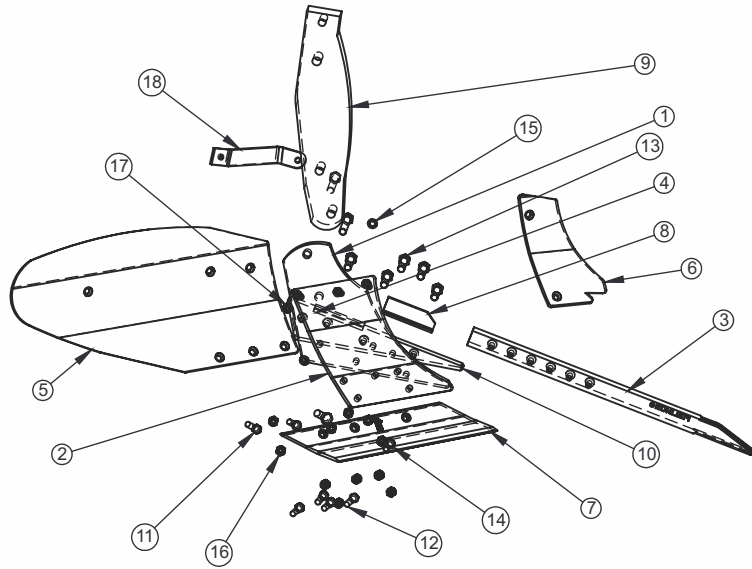
JUMBO FIXED MOULD BOARD PLOUGH (4 BOTTOM)

SR. NO.	PART NO.	PART NAME	QTY.
1	71200085	FURROW ASSEMBLY WITH 5"	3
2	71180037	FRAME ASSEMBLY- 4 BOTTOM	1
3	71200096	DEPTH WHEEL ASSEMBLY	1
4	71600028	DRAW BAR ASSEMBLY	1
5	72150011	CHANEL U-BLOCK LOWER	2
6	71200095	FURROW ASSEMBLY WITH 8"	1
7	71210025	THREE POINT LINKAGE ASSEMBLY	1
8	71200094	BRACKET BUSH	4
9	10260508	HEX HEAD BOLT M14X90X2MM	4
10	10260432	HEX HEAD BOLT M20X90X2.5MM	4
11	10260418	HEX HEAD BOLT M16X95X2MM	4
12	10260987	HEX HEAD BOLT M16X60X2MM	4
13	10260074	HEX HEAD BOLT M16X140X2MM	4
14	10260084	HEX HEAD BOLT M18X65X2.5MM	2
15	10280021	NYLOCK NUT M20X2.5MM	4
16	10280005	NYLOCK NUT M16X2MM	12
17	10280090	NYLOCK NUT M14X2 (P)	4
18	10280020	NYLOCK NUT M18X2.5MM	2
19	10270005	SPRING WASHER 16MM	12
20	10270016	SPRING WASHER 20MM	4
21	10270006	SPRING WASHER 18MM	2
22	10270004	SPRING WASHER 14MM	4
23	10020095	PIN 28X125 MM	2

JUMBO FIXED MOULD BOARD PLOUGH (4 BOTTOM)



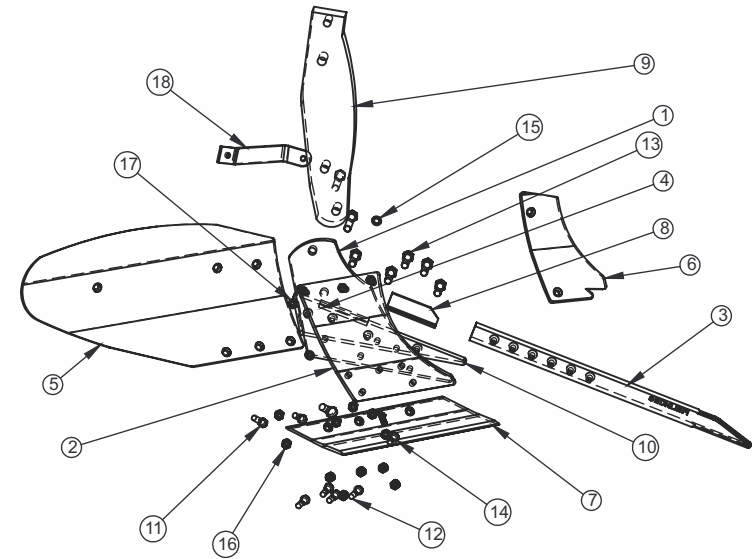
SMALL FURROW ASSEMBLY 5"



SMALL FURROW ASSEMBLY 5"

SR. NO.	PART NO.	PART NAME	QTY.
1	71200086	LAND SIDE MOUNTING PLATE	1
2	71200005	MOULD BOARD MOUNTING PLATE	1
3	10320008	BAR POINT	1
4	71200011	BAR POINT STOPPER FLAT	1
5	71200013	BIG FURROW 5" HOLE	1
6	71200002	SMALL FURROW	1
7	71200003	BLADE	1
8	71200010	BAR POINT STOPPER ANGLE	1
9	71200087	JUMBO PLOUGH TYNE	1
10	71200008	LAND SIDE PLATE SMALL	1
11	10260052	HEX SOCKET CSK M12X1.75X40	10
12	10260050	HEX SOCKET CSK M12X1.75X50	5
13	10280028	PLAIN HEX NUT M12X1.75P	15
14	10260036	HEX HEAD BOLT,M18X75X2.5P	2
15	10270003	SPRING WASHER M12	15
16	10280020	NYLOCK NUT M18X2.5P	2
17	10270006	SPRING WASHER 18MM	2
18	71200092	FURROW SUPPORT CLAMP 5"	1

BIG FURROW ASSEMBLY 8"



BIG FURROW ASSEMBLY 8"

SR. NO.	PART NO.	PART NAME	QTY.
1	71200086	LAND SIDE MOUNTING PLATE	1
2	71200005	MOULD BOARD MOUNTING PLATE	1
3	10320008	BAR POINT	1
4	71200011	BAR POINT STOPPER FLAT	1
5	10320008	BIG FURROW 8" HOLE	1
6	71200002	SMALL FURROW	1
7	71200003	BLADE	1
8	71200010	BAR POINT STOPPER ANGLE	1
9	71200087	JUMBO PLOUGH TYNE	1
10	71200009	LAND SIDE PLATE SMALL	1
11	10260052	HEX SOCKET CSK M12X1.75X40	10
12	10260050	HEX SOCKET CSK M12X1.75X50	5
13	10280028	PLAIN HEX NUT M12X1.75P	15
14	10260036	HEX HEAD BOLT,M18X75X2.5P	2
15	10270003	SPRING WASHER M12	15
16	10280020	NYLOCK NUT M18X2.5P	2
17	10270006	SPRING WASHER 18MM	2
18	71200092	FURROW SUPPORT CLAMP 5"	1

DELIVERY CHECKLIST

Dealer Pre-Delivery (Please Tick)	Please Complete all Dealer information Below
<p>1. Dealer Pre-Delivery Checklist</p> <ol style="list-style-type: none"> 1. The customer or person responsible has been given the operator's manual. 2. The customer undertakes to read the complete operator's manual and understands all aspects of the manual before operation of the machine. 3. All safety, operational and maintenance information have been explained and demonstrated. 4. All greasing and oil points, stickers, guarding and ID plate have been identified and physically pointed out. 5. The customer agrees that it is his responsibility to read and carry out the safety, maintenance and operation as per this operator's manual. 	<p>Dealer Information</p> <p>Dealer's Name.....</p> <p>Address.....</p> <p>State..... Postcode.....</p> <p>Phone..... Fax.....</p> <p>Email.....</p> <p>Service Person.....</p> <p>I confirm that the pre-delivery service was performed on this machine.</p> <p>Signature.....</p> <p>Date.....</p> <p>Comments.....</p>
Customer Delivery (Please Tick)	Please Complete all Customer Information Below
<p>2. Customer Delivery Checklist</p> <ol style="list-style-type: none"> 1. The customer or person responsible has been given the operator's manual. 2. The customer undertakes to read the complete operator's manual and understands all aspects of the manual before operation of the machine. 3. All safety, operational and maintenance information have been explained and demonstrated. 4. All greasing and oil points, stickers, guarding and ID plate have been identified and physically pointed out. 5. The customer agrees that it is his responsibility to read and carry out the safety, maintenance and operation as per this operator's manual. 	<p>Customer Information</p> <p>Customer's Name.....</p> <p>Address.....</p> <p>State..... Postcode.....</p> <p>Phone..... Fax.....</p> <p>Email.....</p> <p>Delivery Person.....</p> <p>I confirm that all of the delivery checks were explained and performed.</p> <p>Signature.....</p> <p>Delivery Date.....</p> <p>Comments.....</p>

FIELDKING

WARRANTY CARD Customer Copy

CUSTOMER NAME Mr./ Mrs. :

ADDRESS :

MOBILE NO. :

Email :

NAME OF IMPLEMENT :

MODEL NO. :

YEAR OF Mfg. :

SERIAL NO. :

REGISTRATION NO. :

DATE OF PURCHASING :

NAME OF DEALER :

Customer's Signature

Dealer's Signature



Beri Udyog Pvt. Ltd.

Corporate Office : Plot No. 235-236 & 238-240, Sec-3, HSIIDC,
Karnal- 132001 (Haryana), India ☎ +91-184-2221571/ 72/ 73

✉ marketing@fieldking.com, exports@fieldking.com, 🌐 www.fieldking.com

FIELDKING

WARRANTY CARD Company Copy

CUSTOMER NAME Mr./ Mrs :

ADDRESS :

MOBILE NO. :

Email :

NAME OF IMPLEMENT :

MODEL NO. :

YEAR OF Mfg. :

SERIAL NO. :

REGISTRATION NO. :

DATE OF PURCHASING :

NAME OF DEALER :

Customer's Signature

Dealer's Signature



Beri Udyog Pvt. Ltd.

Corporate Office : Plot No. 235-236 & 238-240, Sec-3, HSIIDC,
Karnal- 132001 (Haryana), India

☎ +91-184-2221571/ 72/ 73
✉ marketing@fieldking.com, exports@fieldking.com, 🌐 www.fieldking.com

FIELDKING

WARRANTY CARD

Dealer Copy

CUSTOMER NAME Mr./ Mrs :

ADDRESS :

MOBILE NO. :

Email :

NAME OF IMPLEMENT :

MODEL NO. :

YEAR OF Mfg. :

SERIAL NO. :

REGISTRATION NO. :

DATE OF PURCHASING :

NAME OF DEALER :

Customer's Signature

Dealer's Signature



Beri Udyog Pvt. Ltd.

Corporate Office : Plot No. 235-236 & 238-240, Sec-3, HSIIDC,
Karnal- 132001 (Haryana), India

+91-184-2221571/ 72/ 73
✉ marketing@fieldking.com, exports@fieldking.com, 🌐 www.fieldking.com