

# FIELDKING

## Fixed Mould Board Plough



➤ [Operator Manual](#) ➤ [Service Manual](#) ➤ [Part Catalogue](#)

# CONGRATULATIONS!

You have invested in one of the best implements of its type in the market today.

The care you give your "FIELDKING" implement will greatly determine your satisfaction with its performance and its service life. A careful study of this manual will give you a thorough understanding of your new implement before operating.

If your manual is lost or destroyed, "FIELDKING" will be glad to provide you a new copy. Visit to nearest dealership & get a copy. Most of our manuals can also be downloaded from our website at [www.fieldking.com](http://www.fieldking.com).

As an authorized "FIELDKING" dealer, we stock genuine "FIELDKING" parts which are manufactured with the same precision and skill as our original equipment. Our trained service persons are well informed on methods required to service "FIELDKING" equipments and are ready to help you.

Should you require additional information or assistance, please contact us.

YOUR AUTHORIZED

FIELDKING DEALER

BECAUSE "FIELDKING" MAINTAINS AN ONGOING PROGRAMME OF PRODUCT IMPROVEMENT, WE RESERVE THE RIGHT TO MAKE IMPROVEMENTS IN DESIGN OR CHANGE IN SPECIFICATION WITHOUT INCURRING ANY OBLIGATION TO INSTALL THEM ON UNITS PREVIOUSLY SOLD. BECAUSE OF THE POSSIBILITY THAT SOME PHOTOGRAPHS IN THIS MANUAL WERE TAKEN OF PROTOTYPE MODELS, PRODUCTION MODELS MAY VARY IN SOME DETAIL. IN ADDITION, SOME PHOTOGRAPHS MAY SHOW SHIELDS REMOVED FOR THE PURPOSE OF CLARITY. NEVER OPERATE THIS IMPLEMENT WITHOUT ALL SHIELDS IN PLACE.

# TO THE PURCHASER

This manual contains valuable information about your new "FIELDKING" Fixed Mould Board Plough. It has been carefully prepared to give you helpful suggestions for operating, adjusting, servicing and ordering spare parts.

Keep this manual in a convenient place for quick and easy reference. Study it carefully. You have purchased a dependable and sturdy Fixed Mould Board Plough but only by proper care and operation you can expect to receive the service and long life designed and built into it.

Sometime in the future your Fixed Mould Board Plough may need new parts to replace which are worn out or broken. If so, go to your dealer and provide him equipment's detail like model and part number.

## CUSTOMER INFORMATION

Name \_\_\_\_\_

Purchased From \_\_\_\_\_

Date of Purchase \_\_\_\_\_

Model No. \_\_\_\_\_

Serial No. \_\_\_\_\_

# PURCHASER / OPERATOR'S RESPONSIBILITY

1. Read and understand the information contained in this manual.
2. Operate, lubricate, assemble and maintain the equipment in accordance with all instructions and safety procedures in this manual.
3. Inspect the equipment and replace or repair any parts that are damaged or worn out which under continued operation would cause damage, wear to other parts, or cause a safety hazard.
4. Return the equipment or parts to the authorized "FIELDKING" dealer, from where it was purchased, for service or replacement of defective parts that are covered by warranty. (The "FIELDKING" Factory may inspect equipment or parts before warranty claims are honored.)
5. All costs incurred by the dealer for traveling to or transporting the equipment for warranty inspection and claims will be borne by the customer.

# INDEX

## 1. TECHNICAL DATA

- 1.1 Introduction

## 2. USAGE INSTRUCTIONS

- 2.1 Before Use
- 2.2 Attaching Plough to the tractor
- 2.3 Note

## 3. TRACTOR PREPARATION

- 3.1 Instructions for tractor preparation
- 3.2 Adjustments
- 3.3 Warning for driver
- 3.4 Danger
- 3.5 Draft of the M.B. plough
- 3.6 Adjustments for deeper ploughing

## 4. MAINTENANCE

- 4.1 Maintenance Instructions
- 4.2 Storage of Machine after work
- 4.3 Instruction for Driver

## 5. INSTRUCTION, PICTURES AND FOR TRACTOR OPERATOR/DRIVER

### NOTE:

BERI UDYOG PVT. LTD reserves the right to modify machine design and specifications provided herein without any notice. Information provided herein is of descriptive nature. Performance quality might depend on soil quality.

# 1. TECHNICAL DATA

## 1.1 INTRODUCTION

This handbook contains the use and maintenance instructions with a list of the spare parts of the mould board plough.

This M.B. plough is equipped with heavy-duty box frame specially designed for deep ploughing/land preparation of rough soil. It is designed to work in all types of soil for basic functions such as soil breaking, soil raising and soil turning. It can handle the toughest ploughing job with outstanding penetration performance.

Regular and satisfactory operations together with economic and long lasting use of the implement depend on the compliance with instructions given in this handbook.

Compliance with the instructions in this handbook is also important since Manufacturer declines all and every responsibility for damage to persons or property caused by negligence and failure to comply with these instructions.

## 2. USAGE INSTRUCTIONS

### 2.1 BEFORE USE

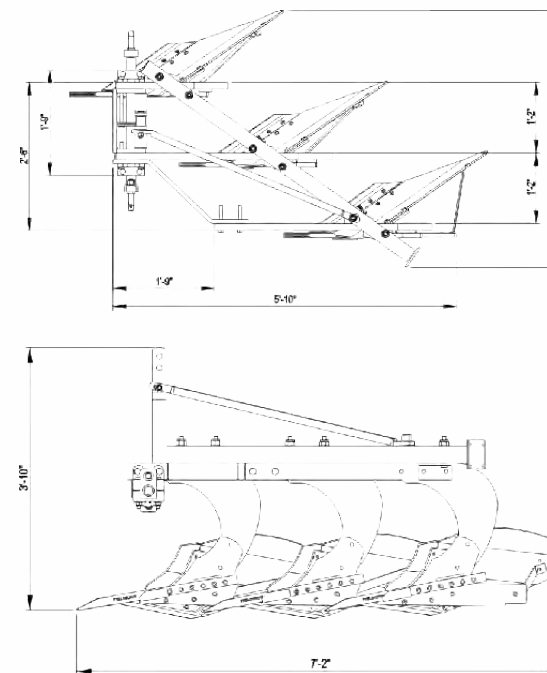
Before mounting the M. B. plough make sure that all nuts and bolts are properly secured.

### 2.2 ATTACHING THE PLOUGH TO THE TRACTOR

1. Place the plough duly leveled on even land.
2. Bring the tractor backwards to the plough(don't drag the plough towards the tractor).
3. Attach the left arm of the tractor to the plough first.
4. Attach the central arm to the plough. To attach, turn the screws on both sides to an equal length. If the arm is too short or too long, turn the screw to adjust both simultaneously until aligned with the hole on the central arm.
5. To attach the lower right arm, turn the screw until the mounting pin is at the same level as the hole on the tractor arm. If the gap between hole and mounting pin is too close or too distant, turn the control arm in or pull it away to an appropriate distance respectively. You may have to adjust both height and distance at the same time. When the hole at tractor arm and mounting pin are at even levels, insert the pin in the hole and lock it with the lynch pin.
6. After attaching the plough lift it and adjust the control arm parallel to the ground. When you look from both rear or sideways, the points should all be touching the ground uniformly.

### 2.3 NOTE:-

The plough will work best when the right wheel of the tractor is inside the previously ploughed furrow i.e. when the plough will be in one of the furrow. Readjust the plough alignments if need be. The first bar point will pick up a lot or a little soil depending on how far or near the rear wheel is to the furrow respectively.



## 3. TRACTOR PREPARATION

### 3.1 INSTRUCTIONS FOR TRACTOR PREPARATION

The following are typical instructions for preparing a tractor for operation.

1. The horsepower of tractor selected should match that of the implement.
2. Adjust the front and rear wheel track width.
3. Provide adequate front end ballast for tractor stability.
4. All plough adjustment should be carried out.
5. Select load and depth control setting according to tractor operator's manual.

### 3.2 ADJUSTMENTS

In order to get better results, the following adjustments are necessary.

#### 1. Cutting Angle Adjustments

Provision is given in the plough standard for the adjustment of the horizontal angle and vertical tilt angle to obtain optimum point operation in various soil conditions. Tilt Angle is the angle which the plain of the cutting edge makes with the vertical line. It

ranges from 100 - 150. Increasing the tilt angle improves point penetration in heavy, sticky soils. Decreasing the tilt angle improves point penetration in loose and brittle soils.

## 2. Leveling the plough

The level of the plough is controlled by the tractor top link. If the rear end of the plough beam is higher than the front end of the beam, extend the top link. If rear end of the plough beam is lower than the front end, then shorten the top link. Lateral leveling is controlled by adjusting the length of the tractor right lower link. These adjustments must be made with the plough prior to operation.

## 3.3 WARNING FOR DRIVER

1. Before ploughing check all the nuts and bolts of the M.B. plough.
2. Don't plough on stony soil.
3. Tractor should be in high first gear.
4. If soil is hard then plough the field at least twice.
5. Lift the M.B. plough on every turn.
6. Be vigilant about the tree roots and stones.
7. Keep proper distance from M.B. plough when working.
8. Lift the plough before approaching the road.

## 3.4 DANGER

Before ploughing with M B plough make sure that nobody stands near it.

## 3.5 DRAFT OF THE M.B. PLOUGH

The type of the soil is the greatest external factor to be considered in drafting of any plough. In very hard ground, it is often necessary to add weight to the wheels to force the plough into the soil.

The bearing conditions of the bearing housing will also affect the draft. Keep bearing in smooth conditions i.e. apply the grease whenever necessary.

Draft is affected by the depth and width of cut per bottom for complete plough too. Speed is also another factor which increases the draft, doubling the speed increases the draft by about 20 -25%.

## 3.6 ADJUSTMENTS FOR DEEPER PLOUGHING

The depth of the plough can be obtained by the position and draft control levers of the tractor hydraulic system. However more depth can be obtained by:

1. Adding extra weight to the plough.
2. Reducing or increasing, as per the soil, the tilt angle. A correctly tilted plough tends to penetrate better.
3. If the ground is covered with trash, set the plough in almost vertical position and add weight to the plough. In such soils notched plough gives better results.

## 4. MAINTENANCE

### 4.1 MAINTENANCE INSTRUCTIONS

If you use the M.B. plough on stony land then maintenance also increases. Please follow these rules to get the best results:

1. If M.B. plough is new then after first two hours of working tighten all the nut-bolts.
2. Check the plough adjustments if the steering is hard.
3. After every fifty hours of use tighten all nuts and bolts.
4. Regularly check for loose nuts and bolts.
5. Sharpen the bar point and blades if the blades are blunt as they increase the draft considerably.

### 4.2 STORAGE AFTER WORK

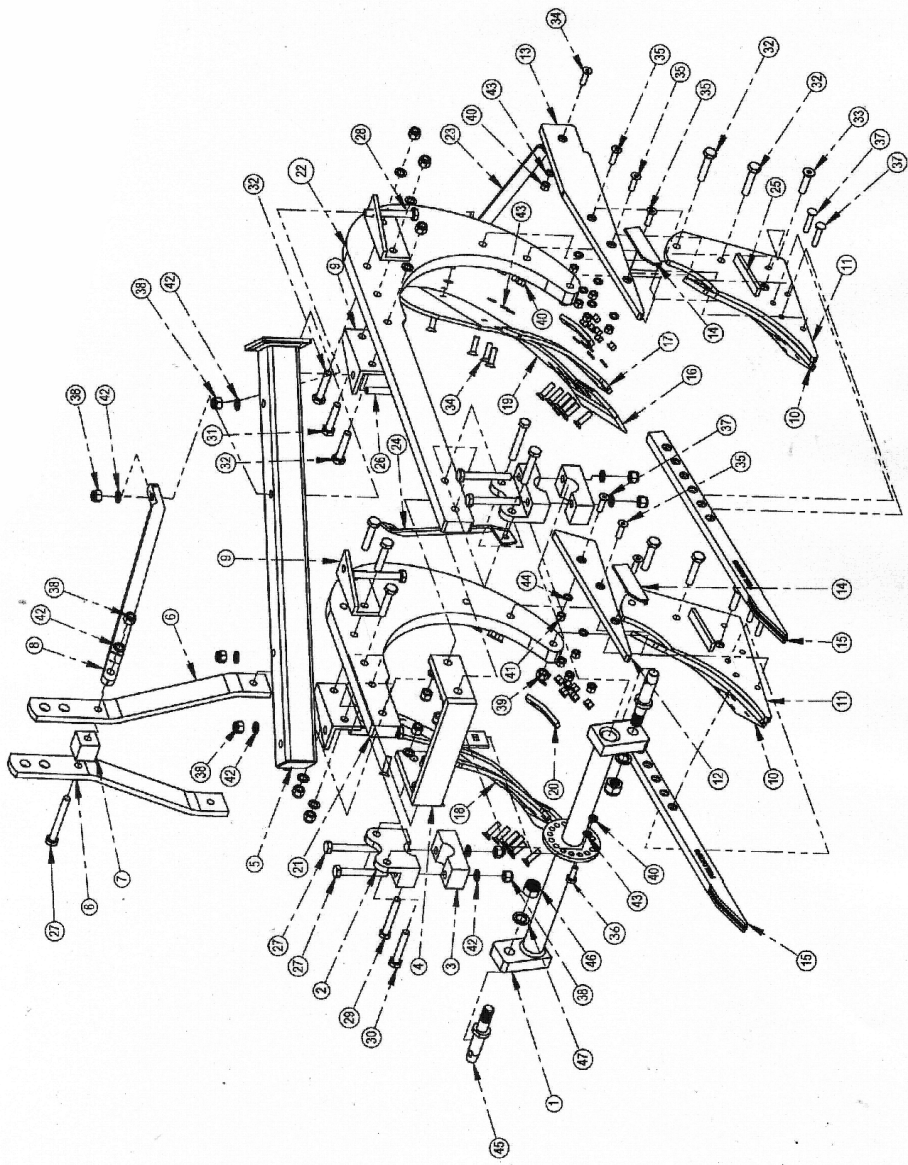
1. Clean the M.B. plough after work
2. Replace the worn out nuts and bolts.
3. If the M.B. plough is not to be used for long time then apply a layer of used oil for rust prevention after cleaning it.  
These steps will increase the life of your M.B. plough.

### 4.3 INSTRUCTION FOR DRIVER

1. When M.B. plough is ready to use don't stand between M.B. plough & the tractor.
2. Properly fit the three point linkage as mentioned above & lock with the lynch pin.
3. Never turn or reverse the tractor when the plough is engaged in the soil.



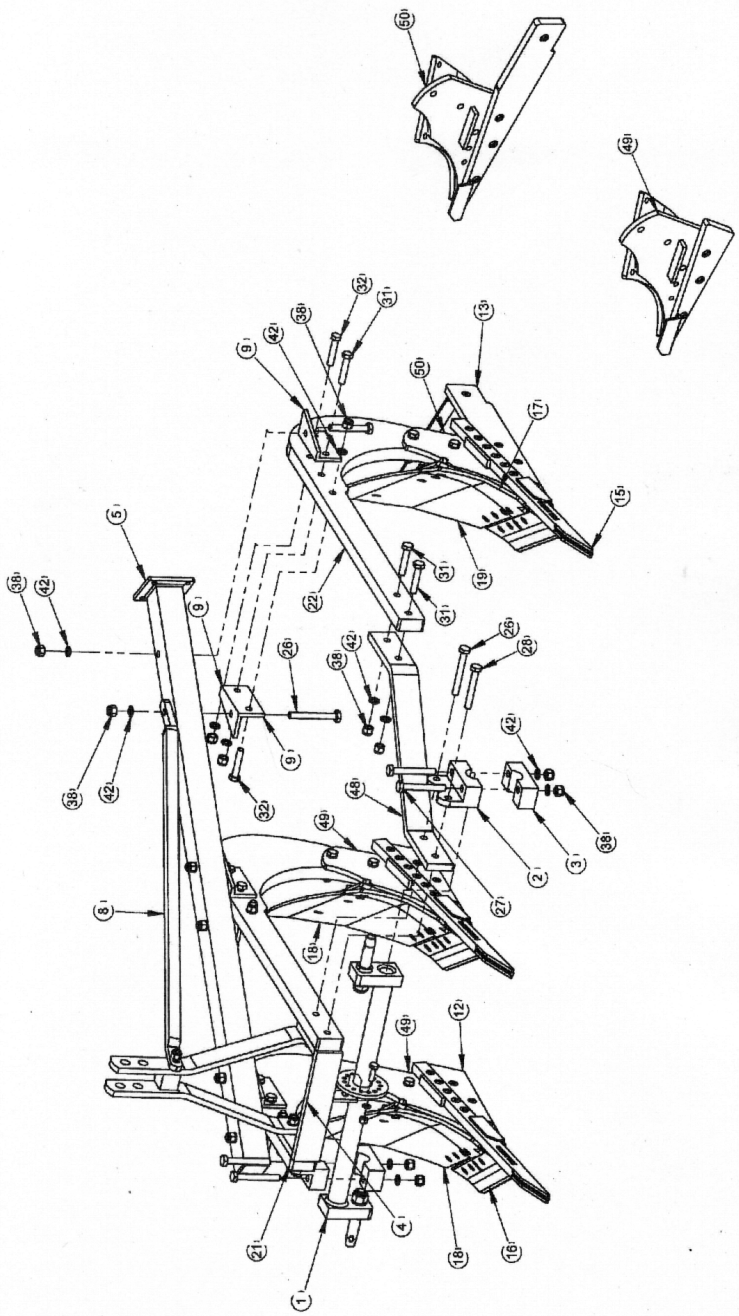
# M.B. PLOUGH 2 BOTTOM



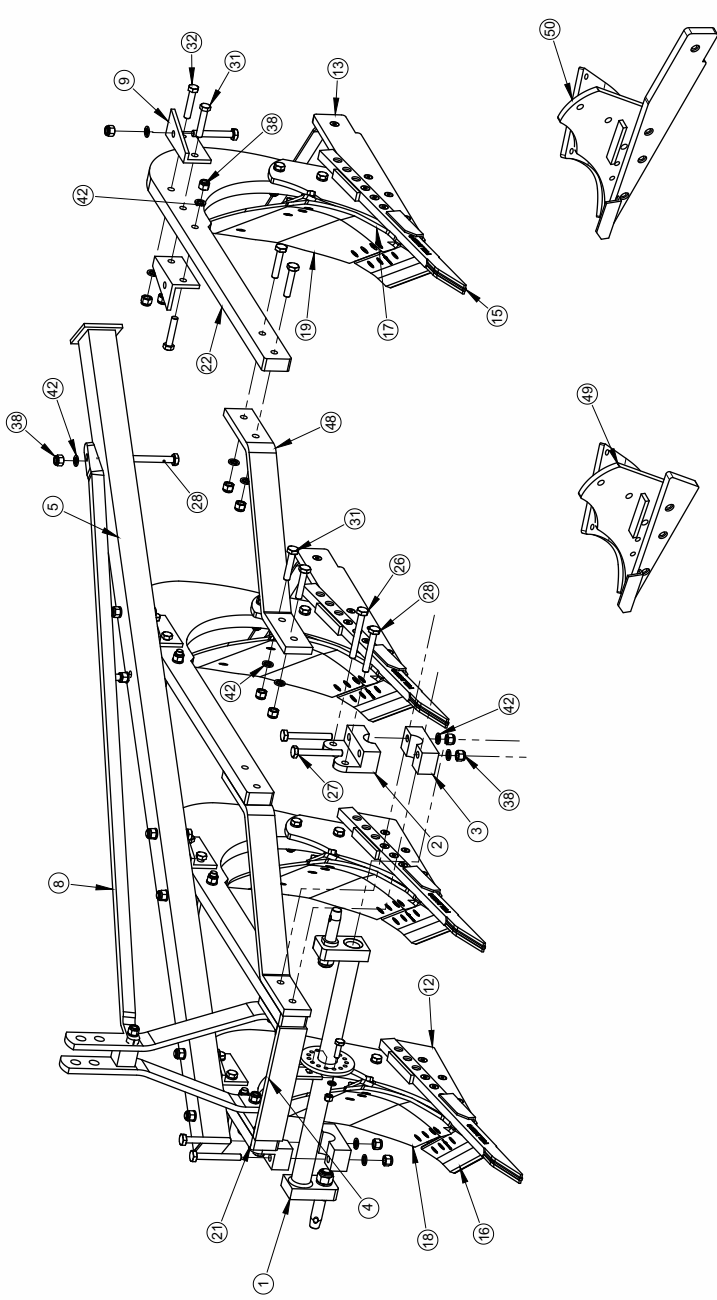
M.B. PLOUGH PART LIST

Sr No.	2 BOTTOM (36/25 mm)		PART NAME	3 BOTTOM (36/25 mm)		4 BOTTOM (36/25 mm)	
	PART CODE	QTY		PART CODE	QTY	PART CODE	QTY
1	71600010	1	M.B. PLOUGH DRAWBAR	71600010	1	71600010	1
2	71600003	2	DRAWBAR CLAMP UPPER (M.B. PLOUGH)	71600003	2	71600003	2
3	71600004	2	DRAWBAR CLAMP LOWER (M.B. PLOUGH)	71600004	2	71600004	2
4	71610001	1	U-CLAMP ASSEMBLY MOULD BOARD PLOUGH	71610001	1	71610001	1
5	71180013	2	BOX FRAME M.B. PLOUGH	71180014	2	71180015	2
6	71210001	1	LEVER FLAT FRONT TOP LINK	71210001	1	71210001	1
7	10070018	1	LINKAGE BUSH	10070018	1	10070018	1
8	71210002	1	CONNECTING SQUARE ROD	71210003	1	71210004	1
9	71190005	4	BOX FRAME SUPPORT CLAMP	71190009	6	71190009	8
10	71200005	2	MOULD BOARD MOUNTING PLATE	71200005	3	71200005	4
11	71200004	2	LAND SIDE MOUNTING PLATE	71200004	3	71200004	4
12	71200008	1	LAND SIDE PLATE SMALL	71200008	2	71200008	3
13	71200009	1	LAND SIDE PLATE BIG	71200009	1	71200009	1
14	71200010	2	LAND SIDE SUPPORT ANGLE	71200010	3	71200010	4
15	10320008	2	BAR POINT	10320008	3	10320008	4
16	71200003	2	BLADE	71200003	3	71200003	4
17	71200002	2	SMALL MOULD BOARD	71200002	3	71200002	4
18	71200001	1	BIG MOULD BOARD WITH 8 INCH HOLE	71200001	1	71200001	1
19	71200013	1	BIG MOULD BOARD WITH 5 INCH HOLE	71200013	2	71200013	3
20	71200014	2	BLADE & MOULD BOARD CLAMP	71200014	3	71200014	4
21	71200016/71200018	4	FRONT TYNE (SMALL)	71200016/71200018	1	71200016/71200018	1
22	71200017/71200019	1	REAR TYNE (BIG)	71200017/71200019	2	71200017/71200019	3
23	71200006	1	MOULD BOARD SUPPORT CLAMP	71200006	2	71200006	3
24	71200015	1	MOULD BOARD SUPPORT CLAMP (8 INCH HOLE)	71200015	1	71200015	1
25	71200011	2	BAR POINT STOPPER FLAT	71200011	3	71200011	4
26	10260388	2	HEX HEAD BOLT M16X135X2MM	10260388	3	10260388	4
27	10260367	5	HEX HEAD BOLT M16X125X2MM	10260072	5	10260072	5
28	10260377	2	HEX HEAD BOLT M16X120X2MM	10260037	3	10260037	4
29	10260386	2	HEX HEAD BOLT M16X110X2MM	10260386	2	10260386	2
30	10260418	2	HEX HEAD BOLT M16X95X2MM	10260418	2	10260418	2
31	10260080	4	HEX HEAD BOLT M16X80X2MM	10260080	6	10260080	8
32	10260125	4	HEX HEAD BOLT M16X75X2MM	10260125	8	10260125	8
33	10260141	2	CSK BOLT 16X70X2MM	10260141	3	10260141	4
34	10260052	23	CSK BOLT M12X40X1.75MM	10260052	34	10260052	47
35	10260050	5	CSK BOLT 12X50X1.75MM	10260050	7	10260050	9
36	10260028	1	HEX HEAD BOLT M12X35X1.75MM	10260028	1	10260028	1
37	10260101	4	ROUND HEAD BOLT 7/16X2 INCH	10260101	6	10260101	8
38	10280005	23	NYLOCK NUT M16X2MM	10280005	33	10280005	43
39	10280005	1	PLAIN NUT 16X2 (P)	10280005	1	10280005	1
40	10280028	29	PLAIN NUT 12X1.75MM	10280028	42	10280028	65
41	10280033	4	MS NUT 7/16 BSW	10280033	6	10280033	8
42	10280005	24	NYLOCK NUT M16X2MM	10280005	34	10280005	44
43	10270003	29	SPRING WASHER 12MM	10270003	42	10270003	55
44	10270018	4	SPRING WASHER 7/16	10270018	8	10270018	8
45	10020023	2	HITCH PIN 32MM	10020023	2	10020023	2
46	10280008	2	NYLOCK NUT 25MM	10280008	2	10280008	2
47	10270007	2	SPRING WASHER 25MM	10270007	2	10270007	2
48		0	EXTENSION LINK	71200020	1	71200020	2
49	71200025	1	FROG ASSEMBLY-LHS(M.B. PLOUGH)	71200025	2	71200025	3
50	71200026	1	FROG ASSEMBLY-RHS(M.B. PLOUGH)	71200026	1	71200026	1

# M.B PLOUGH 3 BOTTOM



# M.B PLOUGH 4 BOTTOM



## DELIVERY CHECKLIST

Dealer Pre-Delivery (Please Tick)	Please Complete all Dealer information Below
<p><b>1. Dealer Pre-Delivery Checklist</b></p> <ol style="list-style-type: none"> <li>1. The customer or person responsible has been given the operator's manual.</li> <li>2. The customer undertakes to read the complete operator's manual and understands all aspects of the manual before operation of the machine.</li> <li>3. All safety, operational and maintenance information have been explained and demonstrated.</li> <li>4. All greasing and oil points, stickers, guarding and ID plate have been identified and physically pointed out.</li> <li>5. The customer agrees that it is his responsibility to read and carry out the safety, maintenance and operation as per this operator's manual.</li> </ol>	<p><b>Dealer Information</b></p> <p>Dealer's Name.....</p> <p>Address.....</p> <p>State..... Postcode.....</p> <p>Phone..... Fax.....</p> <p>Email.....</p> <p>Service Person.....</p> <p>I confirm that the pre-delivery service was performed on this machine.</p> <p>Signature.....</p> <p>Date.....</p> <p>Comments.....</p>
Customer Delivery (Please Tick)	Please Complete all Customer Information Below
<p><b>2. Customer Delivery Checklist</b></p> <ol style="list-style-type: none"> <li>1. The customer or person responsible has been given the operator's manual.</li> <li>2. The customer undertakes to read the complete operator's manual and understands all aspects of the manual before operation of the machine.</li> <li>3. All safety, operational and maintenance information have been explained and demonstrated.</li> <li>4. All greasing and oil points, stickers, guarding and ID plate have been identified and physically pointed out.</li> <li>5. The customer agrees that it is his responsibility to read and carry out the safety, maintenance and operation as per this operator's manual.</li> </ol>	<p><b>Customer Information</b></p> <p>Customer's Name.....</p> <p>Address.....</p> <p>State..... Postcode.....</p> <p>Phone..... Fax.....</p> <p>Email.....</p> <p>Delivery Person.....</p> <p>I confirm that all of the delivery checks were explained and performed.</p> <p>Signature.....</p> <p>Delivery Date.....</p> <p>Comments.....</p>

# FIELDKING

## WARRANTY CARD Customer Copy

CUSTOMER NAME Mr./ Mrs. :

ADDRESS :

MOBILE NO. :

Email :

NAME OF IMPLEMENT :

MODEL NO. :

YEAR OF Mfg. :

SERIAL NO. :

REGISTRATION NO. :

DATE OF PURCHASING :

NAME OF DEALER :

Customer's Signature

Dealer's Signature



Beri Udyog Pvt. Ltd.

Corporate Office : Plot No. 235-236 & 238-240, Sec-3, HSIIDC,  
Karnal- 132001 (Haryana), India ☎ +91-184-2221571/ 72/ 73

✉ marketing@fieldking.com, exports@fieldking.com, 🌐 www.fieldking.com



# FIELDKING

## WARRANTY CARD Company Copy

CUSTOMER NAME Mr./ Mrs :

ADDRESS :

MOBILE NO. :

Email :

NAME OF IMPLEMENT :

MODEL NO. :

YEAR OF Mfg. :

SERIAL NO. :

REGISTRATION NO. :

DATE OF PURCHASING :

NAME OF DEALER :

Customer's Signature

Dealer's Signature



**Beri Udyog Pvt. Ltd.**

**Corporate Office :** Plot No. 235-236 & 238-240, Sec-3, HSIIDC,  
Karnal- 132001 (Haryana), India

+91-184-2221571/ 72/ 73  
✉ marketing@fieldking.com, exports@fieldking.com, 🌐 www.fieldking.com

# FIELDKING

## WARRANTY CARD

Dealer Copy

CUSTOMER NAME Mr./ Mrs :

ADDRESS :

MOBILE NO. :

Email :

NAME OF IMPLEMENT :

MODEL NO. :

YEAR OF Mfg. :

SERIAL NO. :

REGISTRATION NO. :

DATE OF PURCHASING :

NAME OF DEALER :

Customer's Signature

Dealer's Signature



**Beri Udyog Pvt. Ltd.**

**Corporate Office** : Plot No. 235-236 & 238-240, Sec-3, HSIIDC,  
Karnal- 132001 (Haryana), India ☎ +91-184-2221571/ 72/ 73

✉ marketing@fieldking.com, exports@fieldking.com, 🌐 www.fieldking.com