

FIELDKING

Non Tipping Trailer
(2 Wheel & 4 Wheel)



➤ [Operator Manual](#) ➤ [Service Manual](#) ➤ [Part Catalogue](#)

CONGRATULATIONS!

You have invested in one of the best implements of its type in the market today.

The care you give your "FIELDKING" implement will greatly determine your satisfaction with its performance and its service life. A careful study of this manual will give you a thorough understanding of your new implement before operating.

If your manual is lost or destroyed, "FIELDKING" will be glad to provide you a new copy. Visit to nearest dealership & get a copy. Most of our manuals can also be downloaded from our website at www.fieldking.com.

As an authorized "FIELDKING" dealer, we stock genuine "FIELDKING" parts which are manufactured with the same precision and skill as our original equipment. Our trained service persons are well informed on methods required to service "FIELDKING" equipments and are ready to help you.

Should you require additional information or assistance, please contact us.

YOUR AUTHORIZED
FIELDKING DEALER

BECAUSE "FIELDKING" MAINTAINS AN ONGOING PROGRAMME OF PRODUCT IMPROVEMENT, WE RESERVE THE RIGHT TO MAKE IMPROVEMENTS IN DESIGN OR CHANGE IN SPECIFICATION WITHOUT INCURRING ANY OBLIGATION TO INSTALL THEM ON UNITS PREVIOUSLY SOLD. BECAUSE OF THE POSSIBILITY THAT SOME PHOTOGRAPHS IN THIS MANUAL WERE TAKEN OF PROTOTYPE MODELS, PRODUCTION MODELS MAY VARY IN SOME DETAIL. IN ADDITION, SOME PHOTOGRAPHS MAY SHOW SHIELDS REMOVED FOR THE PURPOSE OF CLARITY. NEVER OPERATE THIS IMPLEMENT WITHOUT ALL SHIELDS IN PLACE.

TO THE PURCHASER

This manual contains valuable information about your new "FIELDKING" non tipping trailer. It has been carefully prepared to give you helpful suggestions for operating, adjusting, servicing and ordering spare parts.

Keep this manual in a convenient place for quick and easy reference. Study it carefully. You have purchased a dependable and sturdy non tipping trailer but only by proper care and operation you can expect to receive the service and long life designed and built into it.

Sometime in the future your non tipping trailer may need new parts to replace which are worn out or broken. If so, go to your dealer and provide him equipment's detail like model and part number.

CUSTOMER INFORMATION

Name _____

Purchased From _____

Date of Purchase _____

Model No. _____

Serial No. _____

PURCHASER / OPERATOR'S RESPONSIBILITY

1. Read and understand the information contained in this manual.
2. Operate, lubricate, assemble and maintain the equipment in accordance with all instructions and safety procedures in this manual.
3. Inspect the equipment and replace or repair any parts that are damaged or worn which under continued operation would cause damage, wear to other parts, or cause a safety hazard.
4. Return the equipment or parts to the authorized "FIELDKING" dealer, from where it was purchased, for service or replacement of defective parts that are covered by warranty. (The "FIELDKING" Factory may inspect equipment or parts before warranty claims are honored.)
5. All costs incurred by the dealer for traveling to or transporting the equipment for warranty inspection and claims will be borne by the customer.

INDEX

1. TECHNICAL DATA

- 1.1 Introduction
- 1.2 Warranty
- 1.3 When the warranty becomes void
- 1.4 Warning

2. USAGE INSTRUCTIONS

- 2.1 Before use
- 2.2 Loading the trailer
- 2.3 Towing the trailer
- 2.4 Safety

3. MAINTENANCE

- 3.1 Maintenance Instructions
- 3.2 Storage of machine after work
- 3.3 Lubrication

4. INSTRUCTION FOR DRIVER

5. TROUBLE- SHOOTING CHART

6. SPARE PARTS LIST

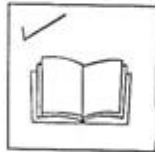
CAUTIONS

NOT TO DO



DO NOT OVERLOAD

TO DO



OPERATOR MANUAL
BEFORE USE

1. TECHNICAL DATA

1.1 INTRODUCTION

Thank you for purchasing this “FIELDKING” product. It has been designed to give you many years of use. This handbook contains the use and maintenance instructions with a list of the spare parts of the trailer. Regular and satisfactory operation together with economic and long lasting use of the implement depends on the compliance with instructions given in this handbook.

Compliance with the instructions in this handbook is also important since manufacturer declines all and every responsibility for damage to persons or property caused by negligence and failure to comply with these instructions.

1.2 WARRANTY

When the machine is delivered, check that it has not been subjected to damage during transport and that the accessories are in a perfect condition and complete.

Any claims following the receipt of damaged goods shall be presented in writing within 8 days from the receipt of the goods.

The purchaser may only make the claims under warranty when he has complied with the warranty conditions in the supply contract.

1.3 WHEN THE WARRANTY BECOMES VOID

Besides the cases specified in the supply agreement, the warranty shall in any case become void.

1. When the implement has been used beyond the specified power limit like (Tractor Horse Power)
2. When repairs made by the customer without authorization from the manufacturer or owing to installation of spurious spare parts, the machine is subjected to variations and the damage can be ascribed to these variations.
3. When the user has failed to comply with the instructions in this handbook.
4. No warranty will be given if the service is not done on time.

1.4 WARNING

1. Thoroughly read the instruction manual before proceeding with the various operations.
2. Maintain the trailer as per the instructions of this handbook.

The trailer is a road worthy equipment which if not used correctly could endanger the operator or bystanders.

2. USAGE INSTRUCTIONS

The "FIELDKING" non tipping trailer has been designed to operate in tandem with tractors capable of safely towing a gross wt. of 5,9,12 Ton as specified on trailer (check this in your tractor operator's manual), fitted with draw-bar.

This equipment is designed for transporting & loading materials. Use in any other way is contrary to the intended use.

The manufacturer accepts no liability for damage or injury resulting from misuse. Compliance with the instructions in this manual is essential for safe operations.

2.1 BEFORE USE

1. Check tyre condition & pressure and ensure that all wheel nuts are tight.
2. Check that there is no other damage to the trailer that could cause a safety risk.
3. Lubricate trailer as in the Maintenance section.

2.2 LOADING THE TRAILER

1. Ensure load is evenly spread & is not heaped above the top of the sides. Maximum payload is 5,9,12 Ton as specified on trailer provided the towing tractor has a safe towing capability.
2. Select a firm level place with no overhead power lines or obstructions & ensure there are no by standers.
3. Never drive with the open trailer window.

2.3 TOWING THE TRAILER

1. Fit front weights to the tractor if needed to maintain good steering control.
2. Do not exceed 30 km/h & reduce speed on slopes & rough grounds.
3. Always engage low gears when going down hills.
4. Always keep tractor in gear.
5. Always lock tractor's independent brakes together before traveling on roads.
6. If someone is guiding you while reversing make sure they are always within your sight to avoid them being trapped.

2.4 SAFETY

You are responsible for the safety of both yourself & those around you when using the trailer. Failure to use safely could result in someone being killed—please observe the safety precautions & ensure that this doesn't happen.

1. Do ensure that every single operator who will use this machine is fully trained in the safe use of it.
2. Do ensure that both tractor & trailer are parked on firm level ground.
3. Do ensure that there are no persons in the immediate area of use other than the operator.
4. Do not allow passengers on tractor or trailer.
5. Do not overload. Maximum payload is 5,9,12 Ton as specified on trailer provided the

towing tractor has a safe towing capability.

6. Do not use trailer unless you have first checked that it is in safe working order.
7. Do ensure that the trailer is parked on level ground with engine stopped & hand-break applied before dismounting from tractor.
8. Do not unhitch the trailer when loaded.
9. Do not modify this trailer in any way as this may impair its safety.
10. Do not make any improvisation repairs to the trailer.
11. Do not attempt to repair tyres unless you are fully competent. Do not exceed maximum pressure marked on tyres. Compressed air in tyres can cause fatal explosions. If proper procedures are not followed.

3. MAINTENANCE

3.1 MAINTENANCE INSTRUCTIONS

All maintenance should be carried out on firm level ground with tractor switched off, hand-brakes applied.

Daily Checks

1. Check tyres pressure.
2. Check all fasteners are properly tightened.

Monthly Checks

1. Check wheel nuts are tight.
2. Lubricate all pivot points.
3. Inspect chassis for any damage or signs of cracking.

3.2 STORAGE OF MACHINE AFTER WORK

1. Wash the trailer after use.
2. Replace the worn out nuts & bolts.
3. If trailer has to remain unused for long time then clean it & apply a layer of used oil and cover it for rust prevention.

3.3 LUBRICATION

Check the grease in your hubs once a year. In most instances, if a good lubricant is used and the lubricants levels are maintained, it may not be necessary. However, should the grease appear to be contaminated or broken down, remove all the old grease from the bearings and hubs and completely re pack.

"These steps will enhance the life of your trailer."

4. INSTRUCTIONS FOR OPERATOR

1. When trailer is ready for use don't stand between trailer & tractor.
2. Properly fit the drawbar & lock with lynch pin.
3. Before you start working, check all nuts & bolts of the trailer.
4. Be vigilant about the trees, poles and cables.

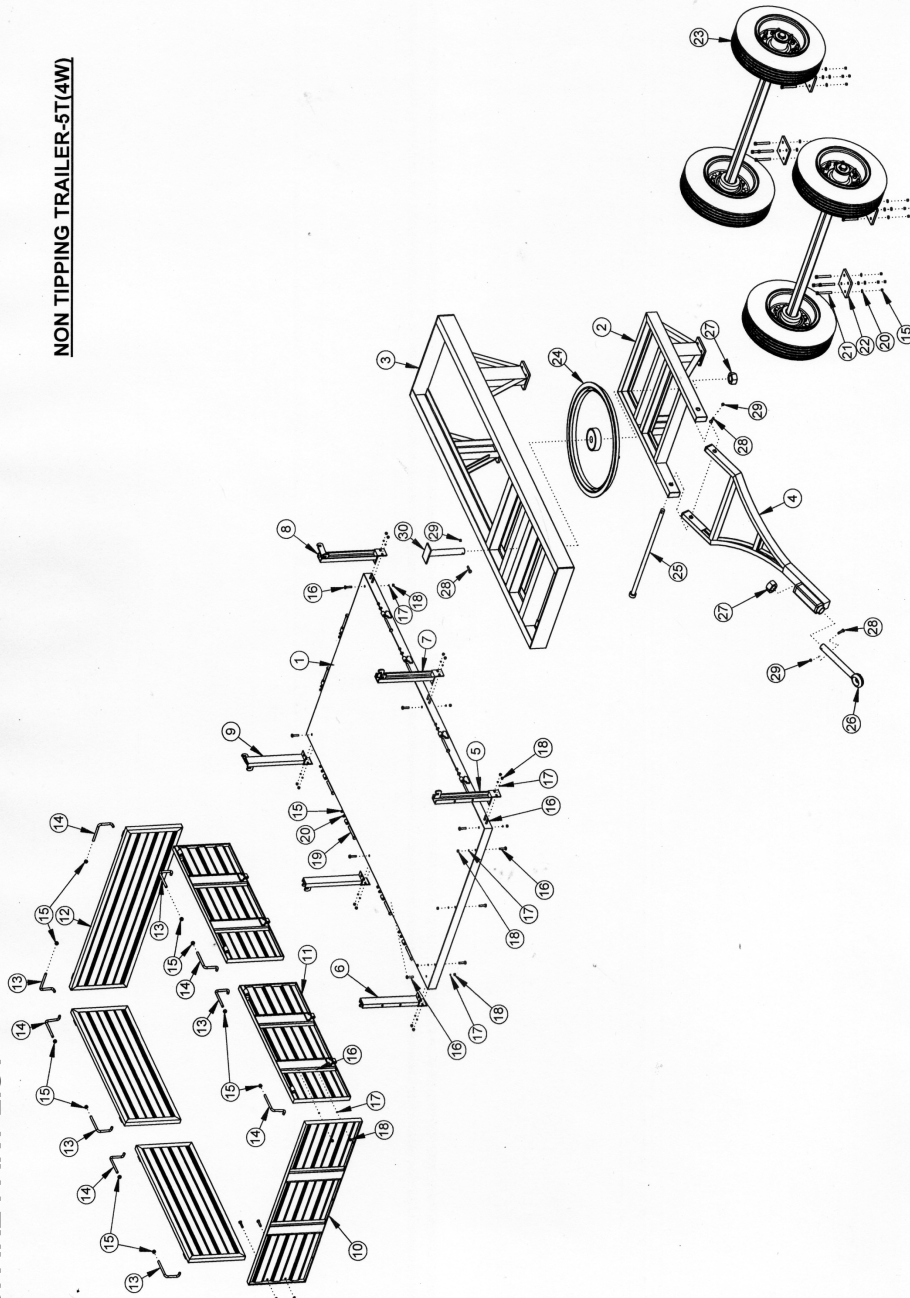
5. TROUBLE -SHOOTING CHART

FAULT	CAUSE	ACTION	NOTE
Hub heats up	Bearing damaged, little grease in the hub, the hub is too loose/tight	Change the bearing when necessary. Lubricate the hub Adjust the tightness of the hub.	See hub adjusting instructions



You must take into consideration that if the machine is used against traffic rules and safety instructions, or if the machine is overloaded and not serviced, there is always a danger of unusual wear or breakdown that may harm both people and the environment.

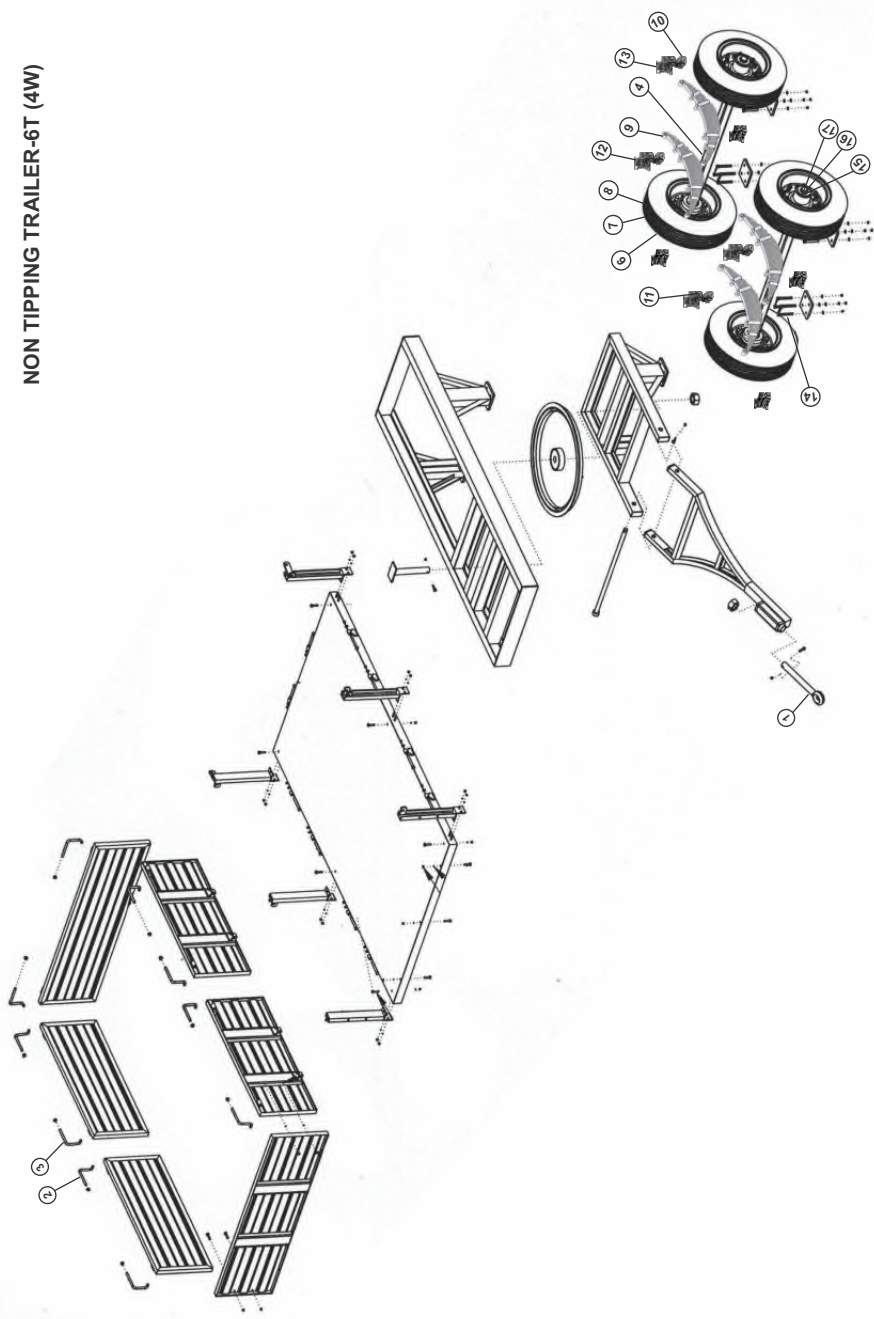
NON TIPPING TRAILER-5T(4W)



6. SPARE PART LIST

NON TIPPING TRAILER-5T(4W)			
SL. NO.	DESCRIPTION	PART NO.	QTY.
1	UPPER CHASSY ASSEMBLY (5 TON 4W NT)	75420016	1
2	DOWN CHASSY ASSEMBLY (5 TON)	75420027	1
3	LOWER FRAME ASSEMBLY	75240018	1
4	FRONT LINK ASSEMBLY	75420028	1
5	FRONT DOOR SUPPORT (R) ASSEMBLY (5 TON)	75390005	1
6	FRONT DOOR SUPPORT (L) ASSEMBLY (5 TON)	75340010	1
7	MIDDLE DOOR SUPPORT ASSEMBLY (5 TON)	75500002	2
8	REAR DOOR SUPPORT (R) ASSEMBLY (5 TON NON TIPPING)	75410005	1
9	REAR DOOR SUPPORT (L) ASSEMBLY (5 TON NON TIPPING)	75400009	1
10	FRONT WINDOW ASSEMBLY (5 TON)	75260009	1
11	SIDE WINDOW ASSEMBLY (5 TON)	75320007	4
12	REAR DOOR ASSEMBLY (5 TON NON TIPPING)	75310007	1
13	LEFT LEVER 16x50x190MM	10300113	4
14	RIGHT LEVER 16X50x190MM	10300111	4
15	NYLOCK NUT M16x2MM	10280005	36
16	HEX HEAD BOLT M12x40x1.75MM(10.9 GRADE) (HALF THREAD)	10260008	25
17	SPRING WASHER 12mm	10270003	25
18	NYLOCK NUT M12x1.75 (P)	10280025	25
19	HEX HEAD BOLT M16x105x2MM (10.9 GRADE)	10260021	10
20	SPRING WASHER 16mm	10270005	26
21	HEX HEAD BOLT M16x140x2MM (5.6 GRADE)	10260074	16
22	AXEL MOUNTING PLATE-175x175x16MM (5 TON)	75420009	4
23	AXEL ASSEMBLY WITH TYRE-75x75MM AXEL	71430004	2
24	REVOLVING RING ASSEMBLY	75420017	1
25	FRONT LINK ATTATCHMENT ROD-DIA 32x977mm	75420016	1
26	RING HITCH (DIA 50x16 INCH) (5 TON)	10430003	1
27	RING HITCH NUT M50	10280048	2
28	HEX HEAD BOLT M10x65x2MM (10.9 GRADE)	10260054	3
29	NYLOCK NUT M10x1.5mm (P)	10280002	3
30	CENTRE HOOK ROD WITH PLATE-Ø50,L-343MM	75420025	1

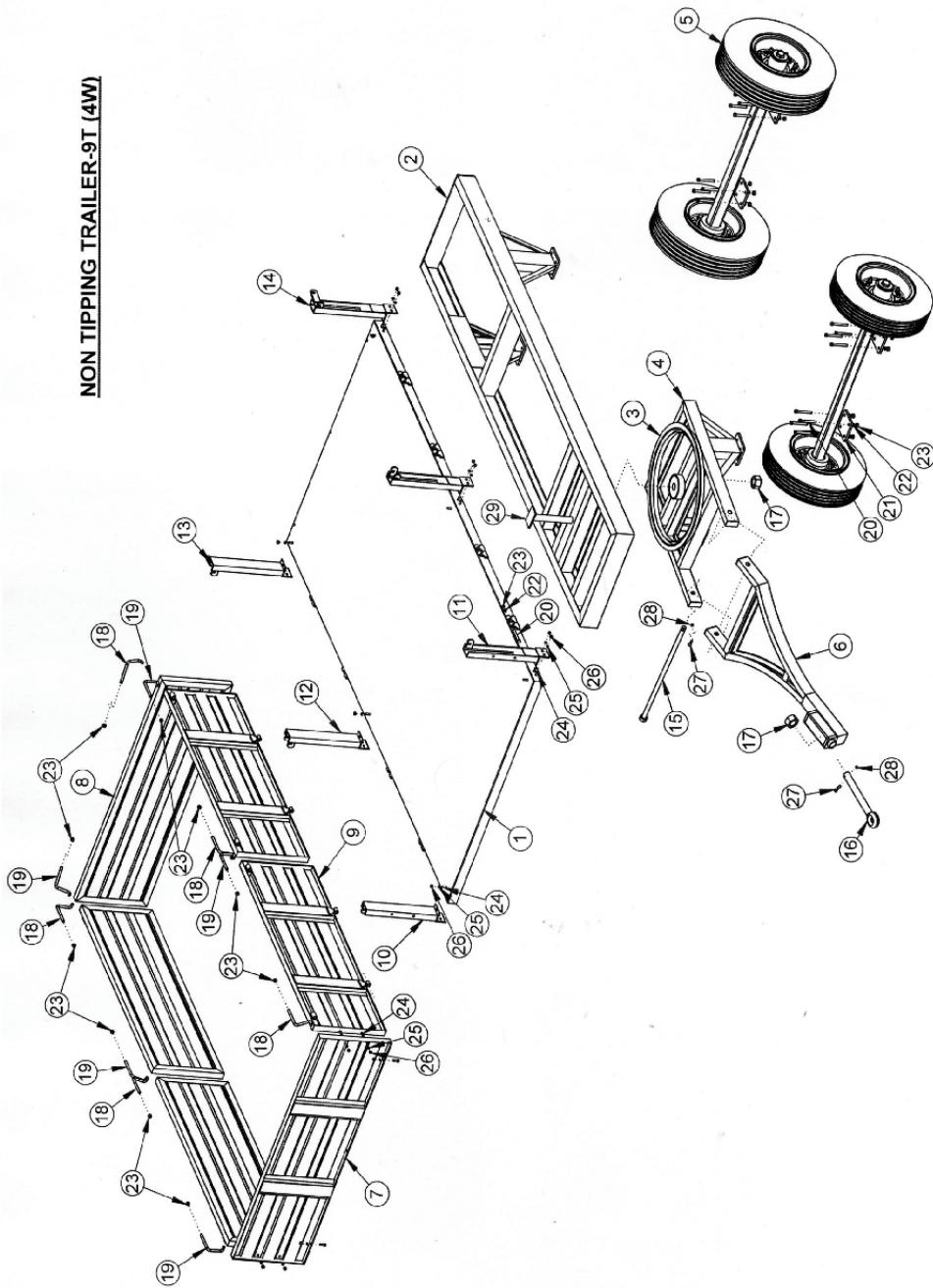
NON TIPPING TRAILER-6T (4W)



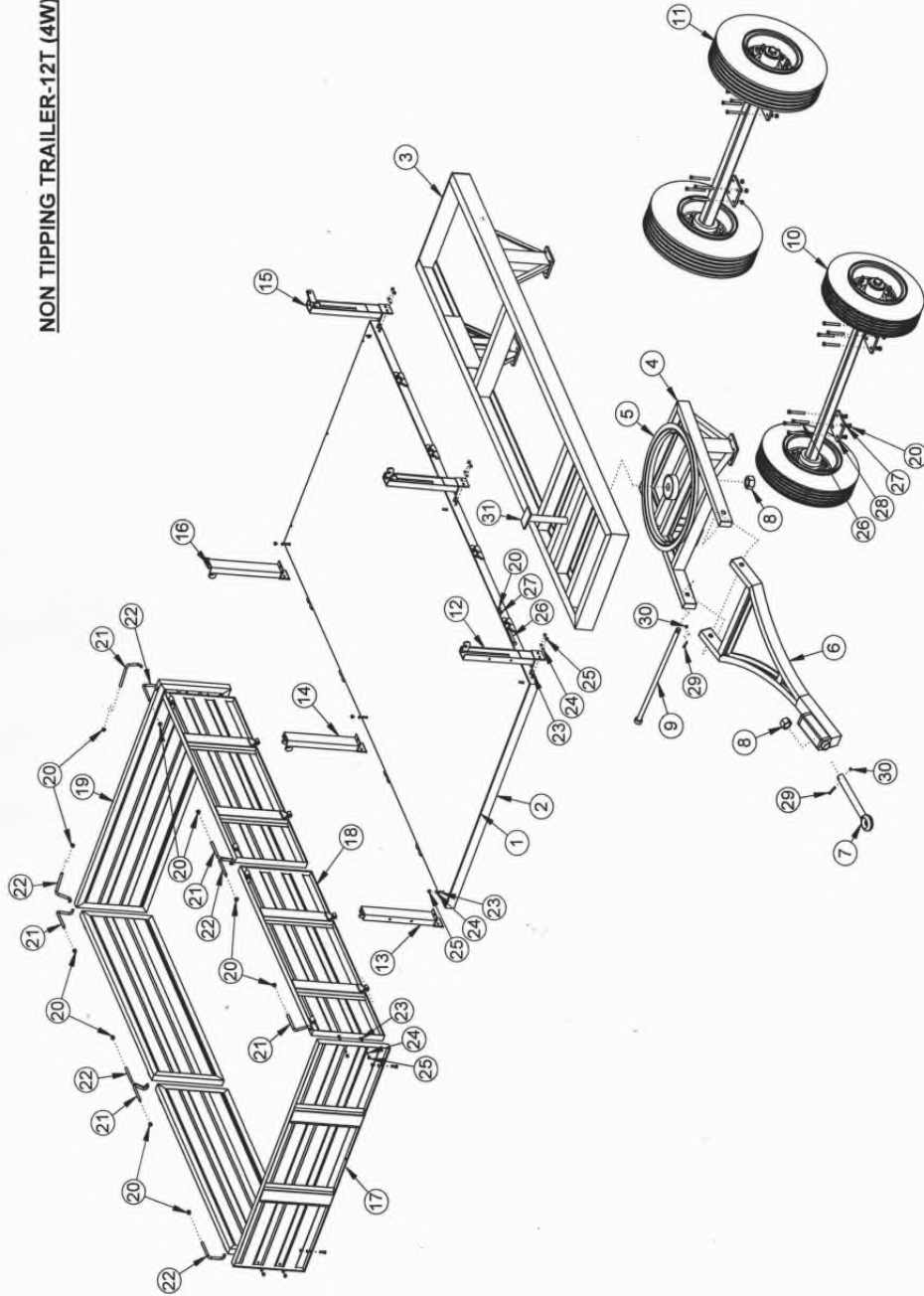
NON TIPPING TRAILER-6T(4W)

SL. NO.	DESCRIPTION	PART NO.	QTY.
1	RING HITCH (DIA 63X18 INCH)	10430004	2
2	LEFT LEVER DIA16X50X190MM (T)	10300113	6
3	RIGHT LEVER 16X50X190MM (T)	10300111	6
4	AXLE ASSEMBLY 75X1829MM (L)	11020004	2
5	WHEEL WITH 8 HOLES (FOR 7.50X16 WEIGHT 25 KG) (FKAT) (5 TON)	11040014	4
6	TYRE (7.50X16)	11030017	4
7	FLAP (7.50X16)	11080004	4
8	TUBE (7.50X16)	11090006	4
9	LEAF SPRING 36 INCH X 8 FLAT (70X10 MM FLAT FOR 4 WHEEL)	11010006	4
10	SUSPENSION BRACKET LOWER FOR LEAF SPRING 36 INCH (AGRICULTURE TRAILER)	10120004	4
11	SUSPENSION BRACKET PIN (AGRICULTURE TRAILER)	10020077	4
12	SUSPENSION BRACKET BOLT (AGRICULTURE TRAILER)	10260185	4
13	SUSPENSION BRACKET SHAKLE	10120009	4
14	U-CLAMP BOLT M16, IW-76, IL-250	10220080	8
15	BEARING 32213	10050012	4
16	BEARING 32214	10050039	4
17	OIL SEAL 170X150X13	10010013	4

NON TIPPING TRAILER-9T (4W)



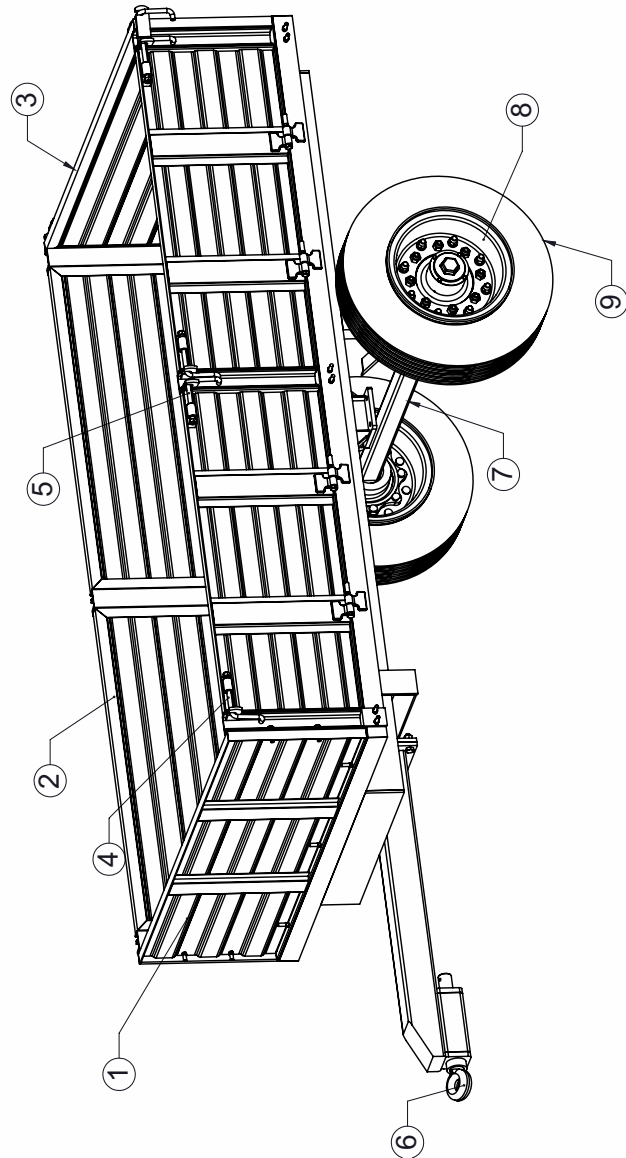
NON TIPPING TRAILER-9T(4W)			
SL. NO.	DESCRIPTION	PART NO.	QTY.
1	UPPER CHASSY ASSEMBLY (9 TON)	75240023	1
2	LOWER FRAME ASSEMBLY	75240062	1
3	REVOLVING RING ASSEMBLY	75420017	1
4	FRONT LINK FRAME ASSEMBLY	75420029	1
5	AXEL ASSEMBLY WITH TYRE-75x75MM AXEL	71430005	2
6	FRONT LINK ASSEMBLY	75420066	1
7	FRONT WINDOW ASSEMBLY (9 TON)	75260013	1
8	REAR DOOR ASSEMBLY (9 TON NON TIPPING)	75310010	1
9	MIDDLE DOOR ASSEMBLY (9 TON)	75320011	4
10	FRONT DOOR SUPPORT (L) ASSEMBLY (9 TON)	75340005	1
11	FRONT DOOR SUPPORT (R) ASSEMBLY (9 TON)	75390003	1
12	MIDDLE DOOR SUPPORT ASSEMBLY (9 TON)	75500001	2
13	REAR DOOR SUPPORT (L) ASSEMBLY (9 TON NON TIPPING)	75400014	1
14	REAR DOOR SUPPORT (R) ASSEMBLY (9 TON NON TIPPING)	75410008	1
15	FRONT LINK ATTATCHMENT ROD-DIA 32x977mm	75420016	1
16	RING HITCH (DIA 50x16 INCH)	10430003	1
17	RING HITCH NUT M50	10280048	2
18	LEFT LEVER 16x50x190MM	10300113	5
19	RIGHT LEVER 16X50x190MM	10300111	5
20	HEX HEAD BOLT M16x140x2MM (5.6 GRADE)	10260074	26
21	AXEL MOUNTING PLATE-175x175x16MM	75420009	4
22	SPRING WASHER 16mm	10270005	26
23	NYLOCK NUT M16x2MM	10280005	36
24	HEX HEAD BOLT M12x40x1.75MM(10.9 GRADE) (HALF THREAD)	10260008	25
25	SPRING WASHER 12mm	10270003	25
26	NYLOCK NUT M12x1.75 (P)	10280025	25
27	HEX HEAD BOLT M10x65x2MM (10.9 GRADE)	10260054	3
28	NYLOCK NUT M10x1.5mm (P)	10280002	3
29	CENTRE HOOK ROD WITH PLATE-Ø50,L-343MM	75420025	1



NON TIPPING TRAILER-12T (4W)

SL. NO.	DESCRIPTION	PART NO.	QTY.
1	FLOOR SHEET	75240011	1
2	BASE FRAME ASSEMBLY	75240057	1
3	LOWER FRAME ASSEMBLY	75240058	1
4	FRONT LINK FRAME ASSEMBLY	75420029	1
5	REVOLVING RING ASSEMBLY	75420017	1
6	FRONT LINK ASSEMBLY	75420066	1
7	RING HITCH(DIA 50 x16 INCH)	10430003	1
8	NUT M50	10280048	2
9	FRONT LINK ATTACMENT ROD	75420016	1
10	AXLE ASSEMBLY WITH TYRE-75x75 mm	71430005	1
11	AXLE ASSEMBLY WITH TYRE-90x90 mm	71430006	1
12	FRONT DOOR SUPPORT(R) ASSEMBLY	75390003	1
13	FRONT DOOR SUPPORT(L) ASSEMBLY	75340005	1
14	MIDDLE DOOR SUPPORT ASSEMBLY	75500001	1
15	REAR DOOR SUPPORT(R) ASSEMBLY	75410008	1
16	REAR DOOR SUPPORT(L) ASSEMBLY	75400014	1
17	FRONT WINDOW ASSEMBLY	75260005	1
18	SIDE DOOR ASSEMBLY	75320003	4
19	REAR DOOR ASSEMBLY	75310006	1
20	NYLOCK NUT- M16	10280005	36
21	LEFT LEVER	10300113	5
22	RIGHT LEVER	10300111	5
23	HEX HEAD BOLT-M12x40(10.9 GRADE)	10260008	25
24	SPRING WASHER- M12	10270003	25
25	HEX NYLOCK NUT-M12	10280025	25
26	HEX HEAD BOLT-M16X140(10.9 GRADE)	10260074	26
27	SPRING WASHER- M16	10270005	26
28	AXLE MOUNTING PLATE	75420009	4
29	HEX HEAD BOLT M10x65x1.5MM (P)	10260054	3
30	NYLOCK NUT M10x1.5MM (P)	10280002	3
31	CENTRAL HOOK ROD WITH PLATE	754200205	1

2 WHEEL NON TIPPING TRAILER



NON TIPPING TRAILER-5T (2W) (10X6X1.75/7.50-16/6D)

ITEM NO.	DESCRIPTION	PART NUMBER	QTY.
1	FRONT DOOR ASSEMBLY	75260028	1
2	SIDE DOOR ASSEMBLY	75320024	4
3	REAR DOOR ASSEMBLY	75310018	1
4	LEFT LEVER	10300113	4
5	RIGHT LEVER	10300111	4
6	RING HITCH 50 MM	10430003	1
7	AXLE ASSEMBLY 75X75	11020004	1
8	LEAF SPRING ASSEMBLY 36 INCH (Optional)	78780003	2
9	RIM(7.50-16)	11040014	2
10	TYRE(7.50-16)	11030017	2

NON TIPPING TRAILER-9T (2W) (12X6X2/9.00-16/6D)

ITEM NO.	DESCRIPTION	PART NUMBER	QTY.
1	FRONT DOOR ASSEMBLY	75260013	1
2	SIDE DOOR ASSEMBLY	75320011	4
3	REAR DOOR ASSEMBLY	75310010	1
4	LEFT LEVER	10300113	4
5	RIGHT LEVER	10300111	4
6	RING HITCH 63 MM	10430004	1
7	AXLE ASSEMBLY 90X90	11020005	1
8	RIM(9.00-16)	11040002	2
9	TYRE(9.00-16)	11030028	2

DELIVERY CHECKLIST

Dealer Pre-Delivery (Please Tick)	Please Complete all Dealer information Below
<p>1. Dealer Pre-Delivery Checklist</p> <ol style="list-style-type: none"> 1. The customer or person responsible has been given the operator's manual. 2. The customer undertakes to read the complete operator's manual and understands all aspects of the manual before operation of the machine. 3. All safety, operational and maintenance information have been explained and demonstrated. 4. All greasing and oil points, stickers, guarding and ID plate have been identified and physically pointed out. 5. The customer agrees that it is his responsibility to read and carry out the safety, maintenance and operation as per this operator's manual. 	<p>Dealer Information</p> <p>Dealer's Name.....</p> <p>Address.....</p> <p>State..... Postcode.....</p> <p>Phone..... Fax.....</p> <p>Email.....</p> <p>Service Person.....</p> <p>I confirm that the pre-delivery service was performed on this machine.</p> <p>Signature.....</p> <p>Date.....</p> <p>Comments.....</p>
Customer Delivery (Please Tick)	Please Complete all Customer Information Below
<p>2. Customer Delivery Checklist</p> <ol style="list-style-type: none"> 1. The customer or person responsible has been given the operator's manual. 2. The customer undertakes to read the complete operator's manual and understands all aspects of the manual before operation of the machine. 3. All safety, operational and maintenance information have been explained and demonstrated. 4. All greasing and oil points, stickers, guarding and ID plate have been identified and physically pointed out. 5. The customer agrees that it is his responsibility to read and carry out the safety, maintenance and operation as per this operator's manual. 	<p>Customer Information</p> <p>Customer's Name.....</p> <p>Address.....</p> <p>State..... Postcode.....</p> <p>Phone..... Fax.....</p> <p>Email.....</p> <p>Delivery Person.....</p> <p>I confirm that all of the delivery checks were explained and performed.</p> <p>Signature.....</p> <p>Delivery Date.....</p> <p>Comments.....</p>

FIELDKING

WARRANTY CARD Customer Copy

CUSTOMER NAME Mr./ Mrs. :

ADDRESS :

MOBILE NO. :

Email :

NAME OF IMPLEMENT :

MODEL NO. :

YEAR OF Mfg. :

SERIAL NO. :

REGISTRATION NO. :

DATE OF PURCHASING :

NAME OF DEALER :

Customer's Signature

Dealer's Signature



Beri Udyog Pvt. Ltd.

Corporate Office : Plot No. 235-236 & 238-240, Sec-3, HSIIDC,
Karnal- 132001 (Haryana), India

☎ +91-184-2221571/ 72/ 73
✉ marketing@fieldking.com, exports@fieldking.com, 🌐 www.fieldking.com

FIELDKING

WARRANTY CARD Company Copy

CUSTOMER NAME Mr./ Mrs :

ADDRESS :

MOBILE NO. :

Email :

NAME OF IMPLEMENT :

MODEL NO. :

YEAR OF Mfg. :

SERIAL NO. :

REGISTRATION NO. :

DATE OF PURCHASING :

NAME OF DEALER :

Customer's Signature

Dealer's Signature



Beri Udyog Pvt. Ltd.

Corporate Office : Plot No. 235-236 & 238-240, Sec-3, HSIIDC,
Karnal- 132001 (Haryana), India

☎ +91-184-2221571/ 72/ 73
✉ marketing@fieldking.com, exports@fieldking.com, 🌐 www.fieldking.com

FIELDKING

WARRANTY CARD Dealer Copy

CUSTOMER NAME Mr./ Mrs :

ADDRESS :

MOBILE NO. :

Email :

NAME OF IMPLEMENT :

MODEL NO. :

YEAR OF Mfg. :

SERIAL NO. :

REGISTRATION NO. :

DATE OF PURCHASING :

NAME OF DEALER :

Customer's Signature

Dealer's Signature



Corporate Office : Plot No. 235-236 & 238-240, Sec-3, HSIIDC,
Karnal- 132001 (Haryana), India

☎ +91-184-2221571/ 72/ 73
✉ marketing@fieldking.com, exports@fieldking.com, 🌐 www.fieldking.com