

FIELDKING

Robust Poly Disc
Harrow / Plough



➤ [Operator Manual](#) ➤ [Service Manual](#) ➤ [Part Catalogue](#)

CONGRATULATIONS!

You have invested in one of the best implements of its type in the market today.

The care you give your "FIELDKING" implement will greatly determine your satisfaction with its performance and its service life. A careful study of this manual will give you a thorough understanding of your new implement before operating.

If your manual is lost or destroyed, "FIELDKING" will be glad to provide you a new copy. Visit to nearest dealership & get a copy. Most of our manuals can also be downloaded from our website at www.fieldking.com.

As an authorized "FIELDKING" dealer, we stock genuine "FIELDKING" parts which are manufactured with the same precision and skill as our original equipment. Our trained service persons are well informed on methods required to service "FIELDKING" equipments and are ready to help you.

Should you require additional information or assistance, please contact us.

YOUR AUTHORIZED

FIELDKING DEALER

BECAUSE "FIELDKING" MAINTAINS AN ONGOING PROGRAMME OF PRODUCT IMPROVEMENT, WE RESERVE THE RIGHT TO MAKE IMPROVEMENTS IN DESIGN OR CHANGE IN SPECIFICATION WITHOUT INCURRING ANY OBLIGATION TO INSTALL THEM ON UNITS PREVIOUSLY SOLD. BECAUSE OF THE POSSIBILITY THAT SOME PHOTOGRAPHS IN THIS MANUAL WERE TAKEN OF PROTOTYPE MODELS, PRODUCTION MODELS MAY VARY IN SOME DETAIL. IN ADDITION, SOME PHOTOGRAPHS MAY SHOW SHIELDS REMOVED FOR THE PURPOSE OF CLARITY. NEVER OPERATE THIS IMPLEMENT WITHOUT ALL SHIELDS IN PLACE.

TO THE PURCHASER

This manual contains valuable information about your new "FIELDKING" Robust Poly Disc Harrow / Plough. It has been carefully prepared to give you helpful suggestions for operating, adjusting, servicing and ordering spare parts.

Keep this manual in a convenient place for quick and easy reference. Study it carefully. You have purchased a dependable and sturdy Robust Poly Disc Harrow / Plough but only by proper care and operation you can expect to receive the service and long life designed and built into it.

Sometime in the future your Robust Poly Disc Harrow / Plough may need new parts to replace those that are worn or broken. If so, go to your dealer and provide him with the model and part number.

CUSTOMER INFORMATION

Name _____

Purchased From _____

Date of Purchase _____

Model No. _____

Serial No. _____

PURCHASER / OPERATOR'S RESPONSIBILITY

1. Read and understand the information contained in this manual.
2. Operate, lubricate, assemble and maintain the equipment in accordance with all instructions and safety procedures in this manual.
3. Inspect the equipment and replace or repair any parts that are damaged or worn out which under continued operation would cause damage, wear to other parts, or cause a safety hazard.
4. Return the equipment or parts to the authorized "FIELDKING" dealer, from where it was purchased, for service or replacement of defective parts that are covered by warranty. (The "FIELDKING" Factory may inspect equipment or parts before warranty claims are honored.)
5. All costs incurred by the dealer for traveling to or transporting the equipment for warranty inspection and claims will be borne by the customer.

INDEX

1. TECHNICAL DATA

- 1.1 Introduction
- 1.2 Warranty
- 1.3 When the warranty becomes void
- 1.4 Warning signals

2. USAGE INSTRUCTIONS

- 2.1 Before Use
- 2.2 Attaching plough to the tractor
- 2.3 Note

3. TRACTOR & IMPLEMENT PREPARATION

- 3.1 Instructions for tractor preparation
- 3.2 Adjustments for implement
- 3.3 Warning for driver
- 3.4 Safety
- 3.5 Draft of the robust poly disc harrow / plough
- 3.6 Adjustments for deeper ploughing

4. MAINTENANCE

- 4.1 Maintenance Instructions
- 4.2 Storage of machine after work
- 4.3 Lubrication
- 4.4 Instructions for driver

5. INSTRUCTIONS, PICTURES AND CODE NO FOR TRACTOR OPERATOR/ DRIVER

1. TECHNICAL DATA

1.1 INTRODUCTION

This handbook contains the use and maintenance instructions with a list of the spare parts of the Robust Poly Disc Harrow / Plough

Robust Poly Disc Harrow / Plough is equipped with heavy-duty rectangular tubular frame specially designed for deep ploughing / land preparation of rough soil.

Regular and satisfactory operations together with economic and long lasting use of the implement depend on the compliance with instructions given in this handbook.

Compliance with the instructions in this handbook is also important since Manufacturer declines all and every responsibility for damage to persons or property caused by negligence and failure to comply with these instructions.

1.2 WARRANTY

When the machine is delivered, check that it has not been subjected to damage during transport and that the accessories are in a perfect condition and complete.

Any claims following the receipt of damaged goods shall be presented in writing within 8 days from the receipt of the goods.

The purchaser may only make the claims under warranty when he has complied with the warranty conditions in the supply contract.

1.3 WHEN THE WARRANTY BECOMES VOID

Besides the cases specified in the supply agreement, the warranty shall in any case become void

1. When the implement has been used beyond the specified power limit like (Tractor Horse Power).
2. When repairs made by the customer without authorization from the manufacturer or owing to installation of spurious spare parts, the machine is subjected to variations and the damage can be ascribed to these variations.
3. When the user has failed to comply with the instructions in this handbook.
4. If the implement is used in very hard/stony soil no warranty of discs will be given.
5. If the implement is not lifted while taking a turn of the tractor no warranty of any breakage of coulter assembly (coulter bearing and coulter disc) would be allowed.
6. No warranty will be given if the service and greasing is not done on time.

1.4 WARNING SIGNALS

1. Thoroughly read the instruction manual before proceeding with the various operations.
2. Keep maintenance and warranty according to this handbook.

2. USAGE INSTRUCTIONS

2.1 BEFORE USE

Before mounting of Robust Poly Disc Harrow / Plough make sure that all nuts and bolts are properly secured.

2.2 ATTACHING THE ROBUST POLY DISC HARROW / PLOUGH TO THE TRACTOR

1. Place the plough duly leveled on the flat piece of land.
2. Reverse the tractor to the harrow/plough (Do not drag the plough up the tractor)
3. Attach the left arm of the tractor to the plough first.
4. Attach the central arm to the harrow/plough. To attach, turn the screws on both sides to an equal length. If the arm is too short or too long, turn the screw to adjust both at the same time until aligned with the hole on the central arm.
5. To attach the lower right arm, turn the screw until the mounting pin is at the same level as the hole on the tractor arm. If the gap between hole and mounting pin is too close or too distant, turn the control arm in or pull it away to an appropriate distance. You may have to adjust both height and distance at the same time. When the hole at tractor arm and mounting pin are even, insert the pin in the hole and lock it with the lynch pin.
6. After attaching the harrow/ plough lift it and adjust the control arm parallel to the ground. When you look from both rear or sideways, the discs should all be touching the ground uniformly.

2.3 NOTE

- ☛ The harrow/plough will work best when the right wheel of the tractor is inside the previously ploughed furrow and the harrow/plough is in one of the furrows. Readjust the harrow/plough alignments again if necessary. The first disc will pick up a lot or a little soil depending on its distance from the rear tractor wheel.
- ☛ To get good results from the harrow/plough, discs should be replaced when their diameter is reduced to 18".

3. TRACTOR & IMPLEMENT PREPARATION

3.1 INSTRUCTIONS FOR TRACTOR PREPARATION

The following are typical instructions for preparing a tractor for operation

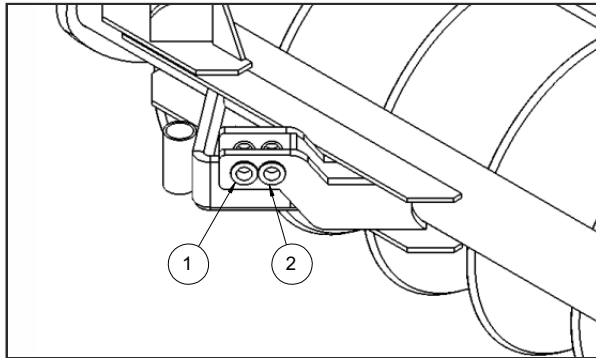
1. The horsepower of tractor selected should match the implement.
2. Adjust the front and rear wheel track width.
3. Provide adequate front end ballast (weight) for tractor stability.
4. Provide proper rear furrow wheel weight.
5. All harrow/plough adjustment should be carried out.
6. Select load and depth control setting according to tractor operator's manual.

3.2 ADJUSTMENTS FOR IMPLEMENT

In order to get better results, the following adjustments are necessary

1. Cutting angle adjustment

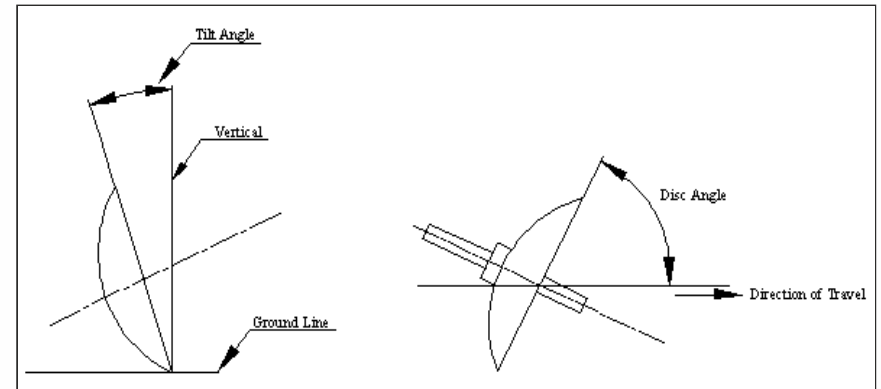
Discs would not cut if they are rolled straight ahead. They must be set at an angle. It depends upon disc size. There is a provision provided for maintaining the cutting angle according to disc diameter. In case of disc size 24" & 26" we mount tractor's lower arm in first hole. And if the disc size is 22" then we mount tractor's lower arm in second hole.



Cutting Angle Adjustment

2. Tilt angle

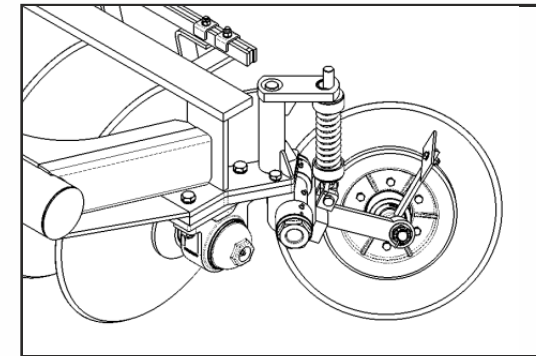
It is the angle which the plain of the cutting edge makes with the vertical line. It ranges from 100 - 250. For this adjustment we must have front disc 2" above the ground level.



Tilt Angle

3. Coulter disc adjustment

The Coulter Disc, besides permitting more and better penetration of the disc blades, is also responsible for the tractor and harrow/plough, acting as a rudder, avoiding lateral deviations. For this adjustment rotate the coulter disc assembly clockwise & anticlockwise according to requirement.



Coulter Disc Assy.

4. Leveling the Robust Poly Disc Harrow / Plough

The level of the harrow/plough is controlled by the tractor top link. If the rear end of the harrow/plough beam is higher than the front end of the beam, lengthen the top link. If rear end of the harrow/plough beam is lower than the front end, then shorten the top link. Lateral leveling is controlled by adjusting the length of the tractor's right lower link. These adjustments must be made with the harrow/plough prior to operation.

5. Tightening the bearing

Bearings must be kept tight. Tighten the castle nuts until the disc binds the hub.

6. Scraper adjustments

We can adjust scrapers through slide scraper bolt in a slot on scraper holding flat. For sticky soils, set them closer to the disc.

3.3 WARNING FOR DRIVER

1. Before ploughing check all nuts and bolts of the Robust Poly Disc Harrow / Plough.
2. Don't plough on stony soil.
3. Tractor should be in high first gear.
4. If soil is hard then harrow/plough the field at least twice.
5. Make sure that the shocker spring is tight.
6. Lift the harrow/plough on every turn.
7. Be vigilant about the tree roots and stones.
8. Keep proper distance from harrow/plough when Robust Poly Disc Harrow / Plough is in working.
9. Lift the harrow/plough before approaching the road.

3.4 SAFETY



Safety-Alert Symbol

Understanding the machine safety labels

The machine safety labels shown in this section are placed in important areas on your machine to draw attention to potential safety hazards.

On your machine the words DANGER, WARNING, and CAUTION are used with this safety-alert symbol. DANGER identifies the most serious hazards.

The operator's manual also explains any potential safety hazards whenever necessary.

- **Before ploughing with Robust Poly Disc Harrow / Plough take care that nobody stands near it.**



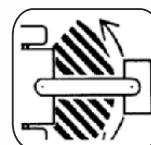
In order to protect yourself always wear adequate clothes and shoes during the operations.



Never allow riders on the tractor or implement unless an additional seat is available.



Be careful when moving around steep gradient to avoid sharp turn.



Never transport the implement on rough roads during the night. When operating, avoid sharp turns that may cause tractor colliding with the implement.

3.5 DRAFT OF THE ROBUST POLY DISC HARROW / PLOUGH

The type of the soil is the greatest external factor to consider the draft of any Robust Poly Disc Harrow / Plough. In very hard ground, it is often necessary to add weight to the wheels to force the plough into the soil.

The bearing conditions of the bearing housing will also affect the draft. Keep bearing in smooth conditions i.e. apply the grease whenever necessary.

Draft is also affected by the depth and width of cut per disc for complete Robust Poly Disc Harrow / Plough. Speed is also another factor which increases the draft. Doubling the speed increases the draft by about 20 -25%.

3.5 Adjustments for deeper ploughing

The depth of the plough can be obtained by the position and draft control levers of the tractor hydraulic system. However more depth can be obtained by:

- a. Adding extra weight to Robust Poly Disc Harrow / Plough.
- b. Reducing the tilt angle. A correctly tilted Robust Poly Disc Harrow / Plough tends to penetrate better.
- c. If the ground is covered with trash, set the disc in almost vertical position and add weight to the plough. In such soils notched disc gives better results.

4. MAINTENANCE

4.1 MAINTENANCE INSTRUCTIONS

If you work the Robust Poly Disc Harrow / Plough on stony land then maintenance also increases. Please follow these rules to get the best results:

1. If Robust Poly Disc Harrow / Plough is new then after first two hours of working tighten all nut bolts.
2. Check the plough adjustments if the steering is hard.
3. Check the scraper adjustment frequently.
4. If the soil has entered in grease nipple, then change the nipple.
5. After every fifty hours grease all greasing points with grease gun and tighten all nuts and bolts.
6. After three hundred hours, open the hub of disc plough & cleanse it with diesel oil, pump in new grease & replace its seal.
7. Constantly check for loose nuts and bolts.
8. Sharpen the disc if the blades are dull. Blunt blades increase the draft considerably.
9. Discs cannot work beyond 18" diameter. They must be replaced for effective ploughing.
10. Keep the bearings lubricated as per the instructions given in the manual.
11. Coat the disc blades for rust prevention with the used oil in slack season.

4.2 STORAGE OF MACHINE AFTER WORK

1. Wash the Robust Poly Disc Harrow / Plough after work
2. Replace the worn out nuts and bolts.
3. If Robust Poly Disc Harrow / Plough has to remain unused for long time then clean it & apply a layer of used oil for rust prevention.

These steps will enhance the life of your Robust Poly Disc Harrow / Plough.

4.3 LUBRICATION

Please take care that high quality grease is used in bearing housings, coulter hub & bushes

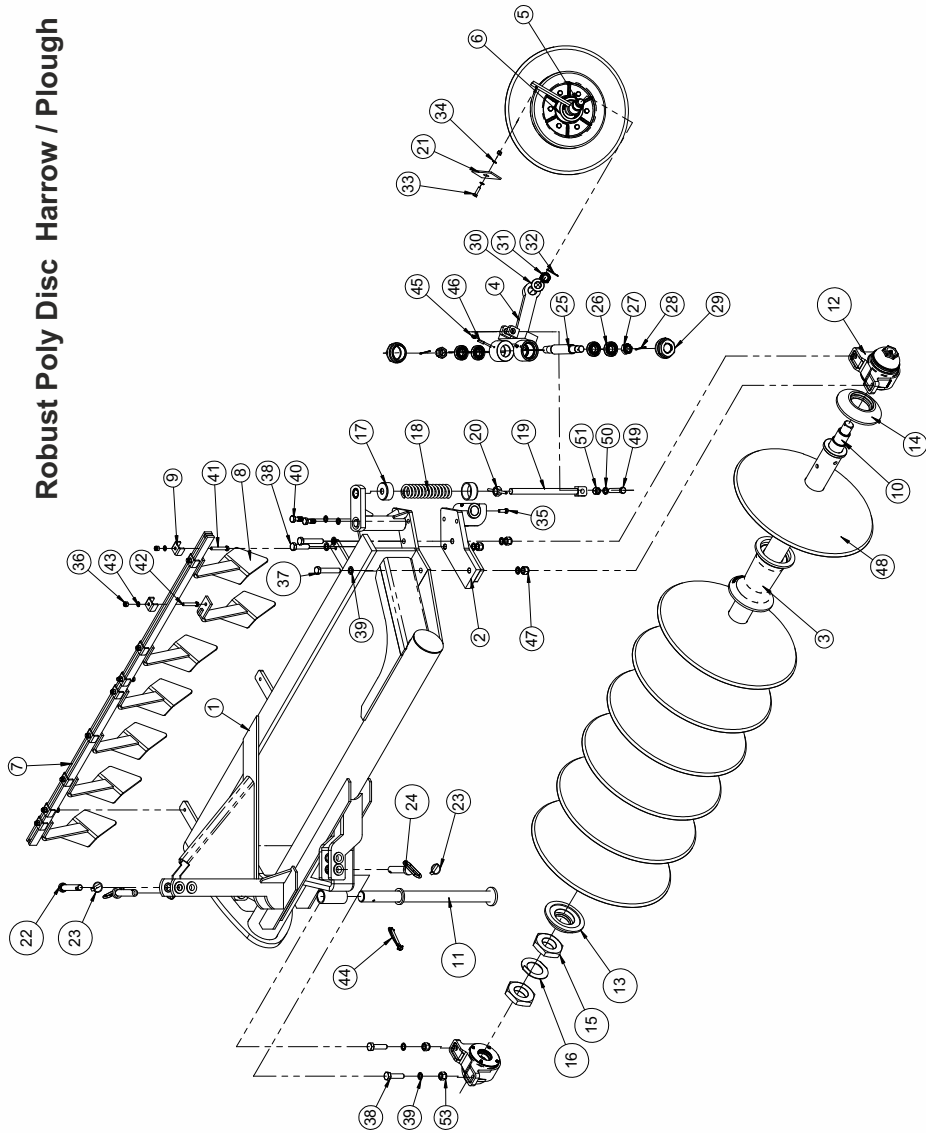
4.4 INSTRUCTIONS FOR DRIVER

1. When Robust Poly Disc Harrow / Plough is ready for use don't stand between Robust Poly Disc Harrow / Plough & the tractor.
2. Properly fit the three point linkage as mentioned above & lock with lynch pin.
3. In case of scraper touching the discs, loosen the scraper bolt and readjust the scraper.
4. Never turn the tractor to the right or left when the harrow/plough is engaged in the soil.
5. Never reverse the tractor when the harrow/plough is engaged in the soil.



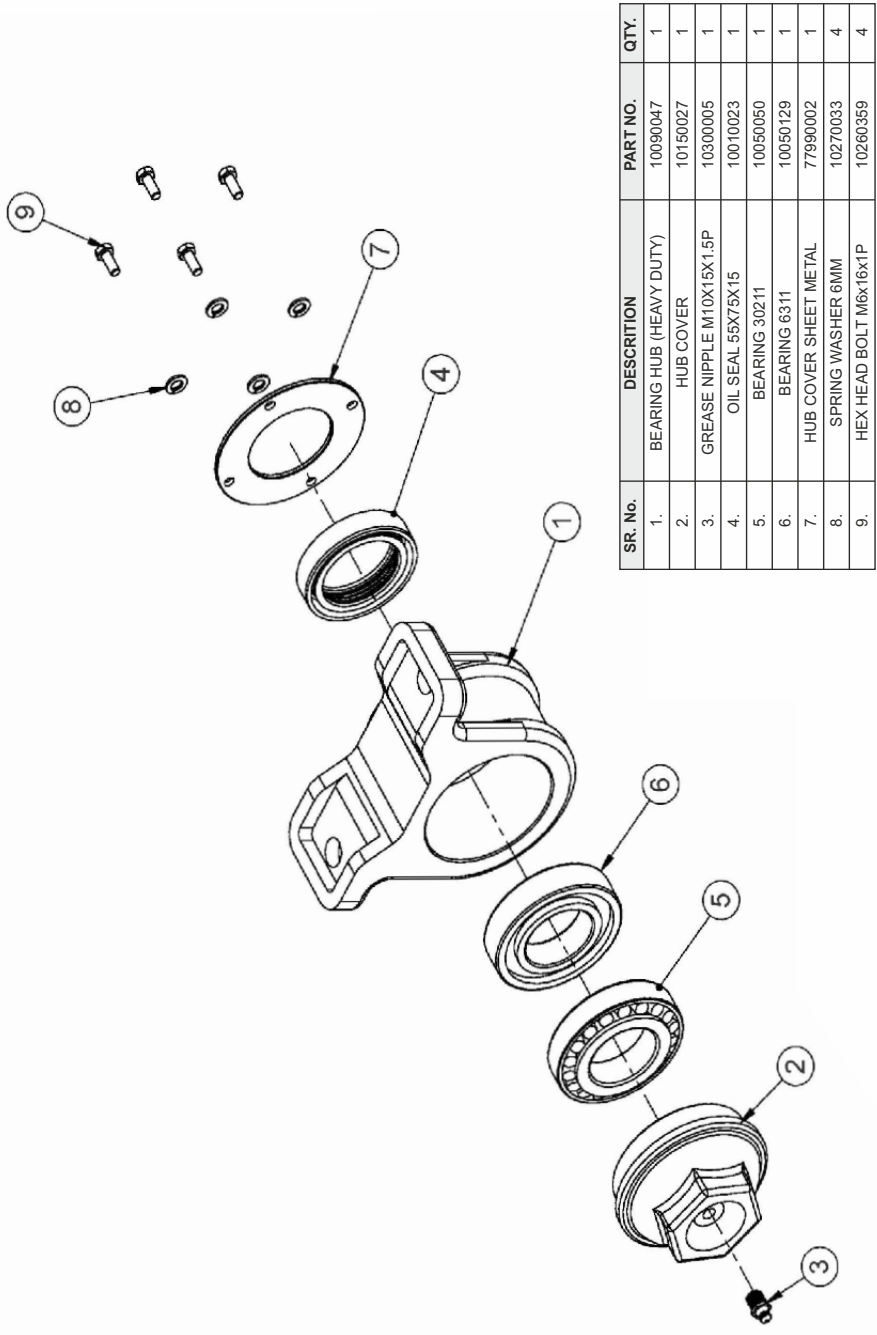
Dear user!
Respect the Ecology.
Do not throw the trash away.
This gesture helps to protect our Environment.

Robust Poly Disc Harrow / Plough



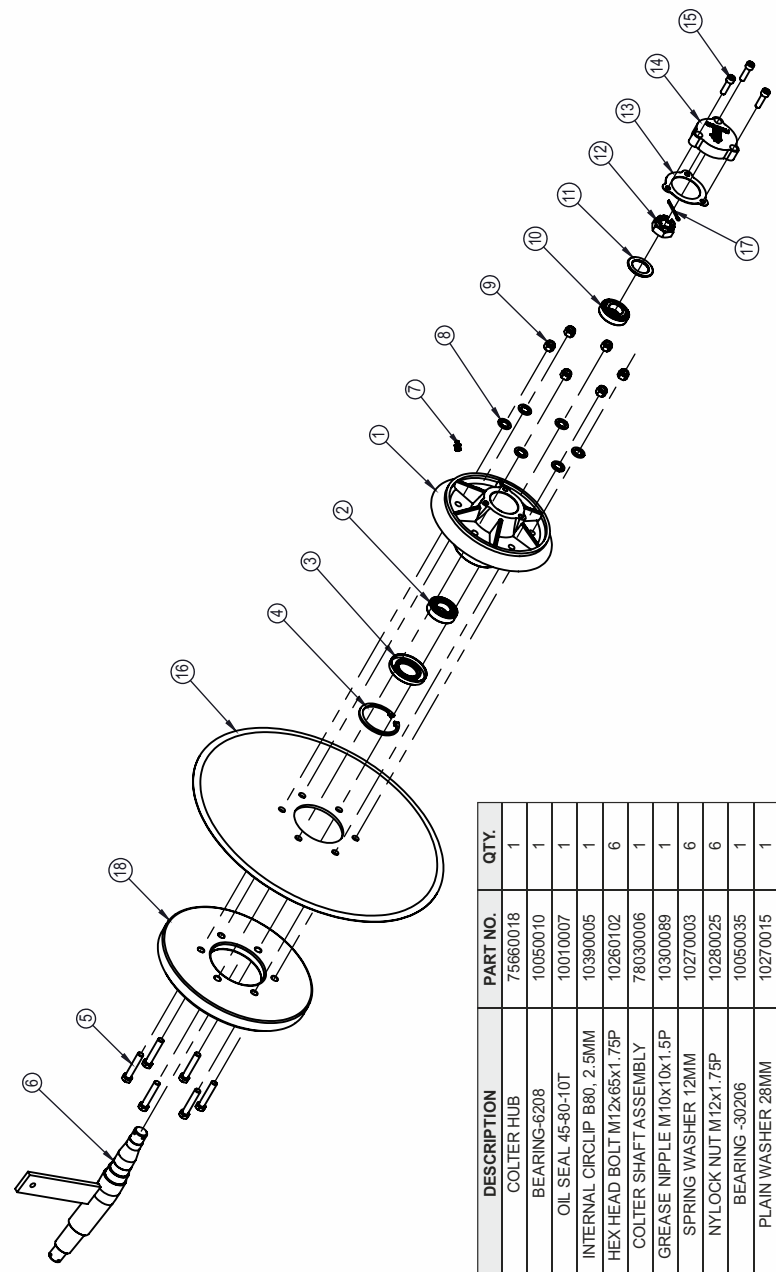
ROBUST POLY DISC HARROW / PLOUGH

Sr. No.	PART DESCRIPTION	PART NO.			QTY.		
		6-DISC	7-DISC	8-DISC	6-DISC	7-DISC	8-DISC
1	MAIN FRAME ASSEMBLY	77970048	77970026	77970049	1		
2	COLTER BRACKET ASSEMBLY	78950052			1		
3	PLAIN SPOOL	10340022 / 10340029 (Super)			5	7	7
4	TAPER SHAFT ASSEMBLY	78950053			1		
5	COLTER SHAFT ASSEMBLY	78030006			1		
6	COLTER HUB ASSEMBLY	75660001			1		
7	SCRAPPER HOLDING ASSEMBLY	75660009	75660008	75660011	1		
8	SRAPPER ASSEMBLY	75650001			6	7	8
9	SCRAPER HOLDING CLAMP	77840003			9	10	11
10	GANG AXLE ASSEMBLY	77980010	77980006	77980012	1		
11	STAND ASSEMBLY	78020003			1		
12	BEARING HUB ASSEMBLY	77990001			2		
13	FRONT CHAPPEN	10360011			1		
14	REAR CHAPPEN	10360012			1		
15	CASTING NUT	10280101			2		
16	LOCKING WASHER	77970085			1		
17	LOWER SPRING CUP ASSY.	76280005			2		
18	COIL SPRING	10210019			1		
19	SPPRING ROD ASSEMBLY.	78950054			1		
20	NUT ASSEMBLY	78950055			1		
21	COLTER SCRAPER	78950048			1		
22	PIN Ø25X120L	10020035			1		
23	LINCH PIN 10MM	10020022			3		
24	PINØ28X132L	10020052			2		
25	COLTER BUSH SHAFT	78010010			1		
26	BEARING 6206ZZ	50080192			4		
27	CASTLE NUT 28X12G, 20MM (T) (BSW)	10280015			2		
28	SPLIT PIN 1/8X2 INCH	10020074			2		
29	CAP	78010008			2		
30	PLAIN WASHER 28MM	10270015			1		
31	CASTLE NUT M28X3.5P	10280082			1		
32	SPLIT PIN 1/8X2.5 INCH	10020097			1		
33	BOLT M10X35X1.5P	10260353			1		
34	SPRING WASHER 10MM	10270002			1		
35	BOLT M12X35X1.75P	10260362			1		
36	NYLOCK NUT M12X1.75P	10280025			9	10	11
37	BOLT M20X120X2.5P	10260444			2		
38	BOLT M20X80X2.5P	10260517			3		
39	SPRING WASHER 20MM	10270016			5		
40	HEX HEAD BOLT M18X45X2P	10260441			2		
41	HEX HEAD BOLT M12X80X1.75P	10260447			3	3	3
42	HEX HEAD BOLT M12X70X1.75P	10260407			6	7	8
43	SPRING WASHER 12MM	10270003			9	10	11
44	WIRE LOCK PIN 9.5X76L	10020113			1		
45	GREASE NIPPLE M8X1.25P	10300179			2		
46	GRUB SCREW M6X15X1P	20050068			2		
47	NYLOCK NUT M20X2.5P	10280021			5		
48	BORON STEEL NOTCHED DISC 26"/24"	10240060 / 10240081			6	7	8
49	HEX HEAD BOLT M18X90X2.5P	10260351			1		
50	SPRING WASHER 18MM	10270006			1		
51	NYLOCK NUT M18X2.5P	10280020			1		



SR. No.	DESCRIPTION	PART NO.	QTY.
1.	BEARING HUB (HEAVY DUTY)	10090047	1
2.	HUB COVER	10150027	1
3.	GREASE NIPPLE M10X15X1.5P	10300005	1
4.	OIL SEAL 55X75X15	10010023	1
5.	BEARING 30211	10050050	1
6.	BEARING 6311	10050129	1
7.	HUB COVER SHEET METAL	77990002	1
8.	SPRING WASHER 6MM	10270033	4
9.	HEX HEAD BOLT M6X16X1P	10260359	4

BEARING HUB ASSY.



SR. NO.	DESCRIPTION	PART NO.	QTY.
1	COLTER HUB	75660018	1
2	BEARING-6208	10050010	1
3	OIL SEAL 45-80-10T	10010007	1
4	INTERNAL CIRCLIP B80, 2.5MM	10390005	1
5	HEX HEAD BOLT M12X65X1.75P	10260102	6
6	COLTER SHAFT ASSEMBLY	78030006	1
7	GREASE NIPPLE M10X10X1.5P	10300089	1
8	SPRING WASHER 12MM	10270003	6
9	NYLOCK NUT M12X1.75P	10280025	6
10	BEARING -30206	10050035	1
11	PLAIN WASHER 28MM	10270015	1
12	CASTLE NUT M28X3.5P	10280082	1
13	COLTER HUB GASKET	10040027	1
14	COLTER HUB COVER	10180005	1
15	ALLEN BOLT M10X35X1.5P	10260327	3
16	FLAT DISC 22'X6'	10240061	1
17	SPLIT PIN 4x55L	10020054	1
18	COLTER DEAD WEIGHT	78010009	1

COLTER HUB WITH COLTER SHAFT ASSY.

DELIVERY CHECKLIST

Dealer Pre-Delivery (Please Tick)	Please Complete all Dealer information Below
<p>1. Dealer Pre-Delivery Checklist</p> <p>1. The customer or person responsible has been given the operator's manual.</p> <p>2. The customer undertakes to read the complete operator's manual and understands all aspects of the manual before operation of the machine.</p> <p>3. All safety, operational and maintenance information have been explained and demonstrated.</p> <p>4. All greasing and oil points, stickers, guarding and ID plate have been identified and physically pointed out.</p> <p>5. The customer agrees that it is his responsibility to read and carry out the safety, maintenance and operation as per this operator's manual.</p>	<p>Dealer Information</p> <p>Dealer's Name.....</p> <p>Address.....</p> <p>State..... Postcode.....</p> <p>Phone..... Fax.....</p> <p>Email.....</p> <p>Service Person.....</p> <p>I confirm that the pre-delivery service was performed on this machine.</p> <p>Signature.....</p> <p>Date.....</p> <p>Comments.....</p>
Customer Delivery (Please Tick)	Please Complete all Customer Information Below
<p>2. Customer Delivery Checklist</p> <p>1. The customer or person responsible has been given the operator's manual.</p> <p>2. The customer undertakes to read the complete operator's manual and understands all aspects of the manual before operation of the machine.</p> <p>3. All safety, operational and maintenance information have been explained and demonstrated.</p> <p>4. All greasing and oil points, stickers, guarding and ID plate have been identified and physically pointed out.</p> <p>5. The customer agrees that it is his responsibility to read and carry out the safety, maintenance and operation as per this operator's manual.</p>	<p>Customer Information</p> <p>Customer's Name.....</p> <p>Address.....</p> <p>State..... Postcode.....</p> <p>Phone..... Fax.....</p> <p>Email.....</p> <p>Delivery Person.....</p> <p>I confirm that all of the delivery checks were explained and performed.</p> <p>Signature.....</p> <p>Delivery Date.....</p> <p>Comments.....</p>

FIELDKING

WARRANTY CARD Customer Copy

CUSTOMER NAME Mr./ Mrs :

ADDRESS :

MOBILE NO. :

Email :

NAME OF IMPLEMENT :

MODEL NO. :

YEAR OF Mfg. :

SERIAL NO. :

REGISTRATION NO. :

DATE OF PURCHASING :

NAME OF DEALER :

Customer's Signature

Dealer's Signature



Beri Udyog Pvt. Ltd.

Corporate Office : Plot No. 235-236 & 238-240, Sec-3, HSIIDC,
 Karnal- 132001 (Haryana), India ☎ +91-184-2221571/ 72/ 73
 ✉ marketing@fieldking.com, exports@fieldking.com, 🌐 www.fieldking.com

FIELDKING

WARRANTY CARD Company Copy

CUSTOMER NAME Mr./ Mrs :

ADDRESS :

MOBILE NO. :

Email :

NAME OF IMPLEMENT :

MODEL NO. :

YEAR OF Mfg. :

SERIAL NO. :

REGISTRATION NO. :

DATE OF PURCHASING :

NAME OF DEALER :

Customer's Signature

Dealer's Signature



Beri Udyog Pvt. Ltd.

Corporate Office : Plot No. 235-236 & 238-240, Sec-3, HSIIDC,
Karnal- 132001 (Haryana), India ☎ +91-184-2221571/ 72/ 73

✉ marketing@fieldking.com, exports@fieldking.com, 🌐 www.fieldking.com

FIELDKING

WARRANTY CARD Dealer Copy

CUSTOMER NAME Mr./ Mrs :

ADDRESS :

MOBILE NO. :

Email :

NAME OF IMPLEMENT :

MODEL NO. :

YEAR OF Mfg. :

SERIAL NO. :

REGISTRATION NO. :

DATE OF PURCHASING :

NAME OF DEALER :

Customer's Signature

Dealer's Signature



Beri Udyog Pvt. Ltd.

Corporate Office : Plot No. 235-236 & 238-240, Sec-3, HSIIDC,
Karnal- 132001 (Haryana), India ☎ +91-184-2221571/ 72/ 73

✉ marketing@fieldking.com, exports@fieldking.com, 🌐 www.fieldking.com