

FIELDKING

Trailed Offset Disc Harrow



➤ [Operator Manual](#) ➤ [Service Manual](#) ➤ [Part Catalogue](#)

CONGRATULATIONS!

You have invested in one of the best implements of its type in the market today.

The care you give your "FIELDKING" implement will greatly determine your satisfaction with its performance and its service life. A careful study of this manual will give you a thorough understanding of your new implement before operating.

If your manual is lost or destroyed, "FIELDKING" will be glad to provide you a new copy. Visit to nearest dealership & get a copy. Most of our manuals can also be downloaded from our website at www.fieldking.com.

As an authorized "FIELDKING" dealer, we stock genuine "FIELDKING" parts which are manufactured with the same precision and skill as our original equipment. Our trained service persons are well informed on methods required to service "FIELDKING" equipments and are ready to help you.

Should you require additional information or assistance, please contact us.

YOUR AUTHORIZED

FIELDKING DEALER

BECAUSE "FIELDKING" MAINTAINS AN ONGOING PROGRAMME OF PRODUCT IMPROVEMENT, WE RESERVE THE RIGHT TO MAKE IMPROVEMENTS IN DESIGN OR CHANGE IN SPECIFICATION WITHOUT INCURRING ANY OBLIGATION TO INSTALL THEM ON UNITS PREVIOUSLY SOLD. BECAUSE OF THE POSSIBILITY THAT SOME PHOTOGRAPHS IN THIS MANUAL WERE TAKEN OF PROTOTYPE MODELS, PRODUCTION MODELS MAY VARY IN SOME DETAIL. IN ADDITION, SOME PHOTOGRAPHS MAY SHOW SHIELDS REMOVED FOR THE PURPOSE OF CLARITY. NEVER OPERATE THIS IMPLEMENT WITHOUT ALL SHIELDS IN PLACE.

TO THE PURCHASER

This manual contains valuable information about your new "FIELDKING" Trailed Offset Disc Harrow. It has been carefully prepared to give you helpful suggestions for operating, adjusting, servicing and ordering spare parts.

Keep this manual in a convenient place for quick and easy reference. Study it carefully. You have purchased a dependable and sturdy Trailed Offset Disc Harrow but only by proper care and operation you can expect to receive the service and long life designed and built into it.

Sometime in the future your Trailed Offset Disc Harrow may need new parts to replace those that are worn or broken. If so, go to your dealer and provide him with the model and part number.

CUSTOMER INFORMATION

Name _____

Purchased From _____

Date of Purchase _____

Model No. _____

Serial No. _____

PURCHASER / OPERATOR'S RESPONSIBILITY

1. Read and understand the information contained in this manual.
2. Operate, lubricate, assemble and maintain the equipment in accordance with all instructions and safety procedures in this manual.
3. Inspect the equipment and replace or repair any parts that are damaged or worn out which under continued operation would cause damage, wear to other parts, or cause a safety hazard.
4. Return the equipment or parts to the authorized "FIELDKING" dealer, from where it was purchased, for service or replacement of defective parts that are covered by warranty. (The "FIELDKING" Factory may inspect equipment or parts before warranty claims are honored.)
5. All costs incurred by the dealer for traveling to or transporting the equipment for warranty inspection and claims will be borne by the customer.

INDEX

1. TECHNICAL DATA

- 1.1 Introduction
- 1.2 Warranty
- 1.3 When the warranty becomes void
- 1.4 Warning

2. USAGE INSTRUCTIONS

- 2.1 Before Use & Adjustments
- 2.2 Attaching Harrow to the tractor
- 2.3 Warning for driver
- 2.4 Safety

3. MAINTENANCE

- 3.1 Maintenance Instructions
- 3.2 Storage of machine after work
- 3.3 Lubrication
- 3.4 Instruction for driver

4. OPERATIONAL GUIDELINES FOR HARROW

5. TROUBLE SHOOTING CHART

1. TECHNICAL DATA

1.1 INTRODUCTION

This handbook contains the use and maintenance instructions with a list of the spare parts of the Trailed Offset Disc Harrow.

This disc harrow is equipped with heavy-duty angle frame specially designed for harrowing / land preparation of rough soil (Secondary finer operation).

Regular and satisfactory operation together with economic and long lasting use of the implement depends on the compliance with instructions given in this handbook.

Compliance with the instructions in this handbook is also important since manufacturer declines all and every responsibility for damage to persons or property caused by negligence and failure to comply with these instructions.

1.2 WARRANTY

When the machine is delivered, check that it has not been subjected to damage during transport and that the accessories are in a perfect condition and complete.

Any claims following the receipt of damaged goods shall be presented in writing within 8 days from the receipt of the goods.

The purchaser may only make the claims under warranty when he has complied with the warranty conditions in the supply contract.

1.3 WHEN THE WARRANTY BECOMES VOID

Besides the cases specified in the supply agreement, the warranty shall in any case become void.

1. When the implement has been used beyond the specified power limit like (Tractor horse power).
2. When repairs made by the customer without authorization from the manufacturer or owing to installation of spurious spare parts, the machine is subjected to variations and the damage can be ascribed to these variations.
3. When the user has failed to comply with the instructions in this handbook.
4. If the implement is used in very hard/stony soil no warranty of discs will be given.
5. No warranty will be given if the service and greasing is not done on time.

1.4 WARNING

1. Thoroughly read the instruction manual before proceeding with the various operations.
2. Maintain the harrow as per the instructions of this handbook to be entitled for warranty.

2. USAGE INSTRUCTIONS

2.1 BEFORE USE & ADJUSTMENTS

1. Before mounting of disc harrow make sure that all nuts & bolts are properly secured.
2. Also determine soil and trash conditions of the field and make the preliminary adjustments. e.g.

a) Disc gang angle adjustment

Gang angle (Angle between two gangs) ranges between 0° to 40°. The angle can be increased for better penetration in dry soil while it should be reduced to avoid clogging in wet soil.

b) Disc harrow leveling

To eliminate uneven penetration and side draft, leveling is done by means of drawbar adjustment .

c) Scraper adjustment

There is no need of scrapper adjustment /having fixed type scraper.

d) Disc harrow penetration

Factors affecting disc harrow penetration are

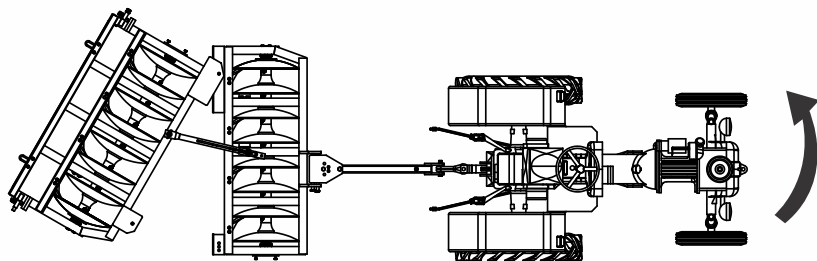
1. Angle of the gang
2. Weight of the harrow
3. Disc diameter
4. Disc sharpness
5. Blunt disc increases the draft considerably, check the disc sharpness
6. Angle of hitch

2.2 ATTACHING THE HARROW TO THE TRACTOR

1. Place the harrow duly leveled on the flat piece of land.
2. Reverse the tractor to the harrow (Do not drag the harrow up the tractor).
3. Attach tongue (Hook) of harrow securely to the towing tractor using drawbar pin.

a) Maneuver direction

Never maneuver to the right hand side, because the angle formed by the disc angle, transmits great effort to the implement, overloading mainly the pulling components i.e. offset bar, drawbar etc.



2.3 WARNING FOR THE DRIVER

1. Before harrowing check all nuts & bolts of the disc harrow.
2. Be vigilant about the tree roots and stones. Don't harrow on stony soil.
3. Tractor should be in first high or fourth low gear.
4. Don't allow anyone to come across the harrow.

1.4 SAFETY

Understanding the machine safety labels



Safety-Alert Symbol

The machine safety labels shown in this section are placed in important areas on your machine to draw attention to potential safety hazards

On your machine the words DANGER, WARNING, and CAUTION are used with this safety-alert symbol. DANGER identifies the most serious hazards.

The operator's manual also explains any potential safety hazards whenever necessary.

► Before harrowing with disc harrow take care that nobody stands near it.



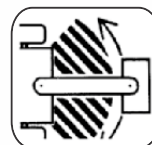
In order to protect yourself always wear adequate clothes and shoes during the operations.



Never allow riders on the tractor or implement unless an additional seat is available.



Be careful when moving around steep gradient to avoid sharp turn.



Never transport the implement on rough roads during the night. When operating, avoid sharp turns that may cause tractor colliding with the implement.

3. MAINTENANCE

3.1 MAINTENANCE INSTRUCTIONS

If you work the Trailed Offset Disc Harrow on stony land then maintenance also increases.

1. If the soil has entered the grease nipple, then change the nipple.
2. If disc harrow is new after initial working of first two hours, tighten all nuts & bolts.
3. After every fifty hours grease all greasing points with grease gun and tighten all nuts & bolts.
4. After fifty hours, open the bearing hub/bearing spool of Trailed Offset Disc Harrow & cleanse with diesel oil & pump in new grease.

3.2 STORAGE OF MACHINE AFTER WORK

1. Wash the Trailed Offset Disc Harrow after work.
2. Replace the worn out nuts & bolts.
3. If Trailed Offset Disc Harrow has to remain unused for long time then clean it & apply a layer of used oil for rust prevention.

These steps will enhance the life of your disc harrow.

3.3 LUBRICATION

1. Please take care that the high quality grease is used in the greasing points.
2. Please take care that the high quality grease is used in the hub.



Be careful with the environment. Do not spill combustible oil, battery and filter residues in the soil. These trashes in contact with the soil reach sub layer which directly damage the environment. Look for the information to recycle or re-use them.

3.4 INSTRUCTIONS FOR DRIVER

1. In case of scraper touching the discs, loosen the scraper bolt and readjust the scraper.
2. Never reverse the tractor when the harrow is engaged in the soil.
3. Never turn the tractor to the right or left when the harrow is engaged in the soil.
4. Properly fit the drawbar hook duly locked with lynch pin.
5. To get good results from the harrow, disc should be replaced when its diameter is reduced by 5" from its original size.
6. When Trailed Offset Disc Harrow is ready for use don't stand between harrow & the tractor.

4. OPERATIONAL GUIDELINES FOR HARROW

1. Adding of wheel weights/water ballasting or combination of both is recommended when excessive rear wheel slippage is experienced.
2. Adjust internal /external check chains to obtain implement swing range within 50 mm (2") when raised.
3. Always maintain the correct tyre pressure to avoid wheel slippage.
4. Always set draw bar pipe correctly for draft and position control operation.

The following settings are necessary to ensure that uniform working depth is maintained

a.) Side Draft

The Trailed Offset Disc Harrow will trail correctly behind the tractor provided the side thrust of the front gang is equal to that of rear. In case it is different there will be side draft. To set it correctly, the gang angle should be changed.

b.) Severe Side Draft

In case of severe side draft the cutting depth of rear disc gang should be increased or decreased.

Precautions during transportation

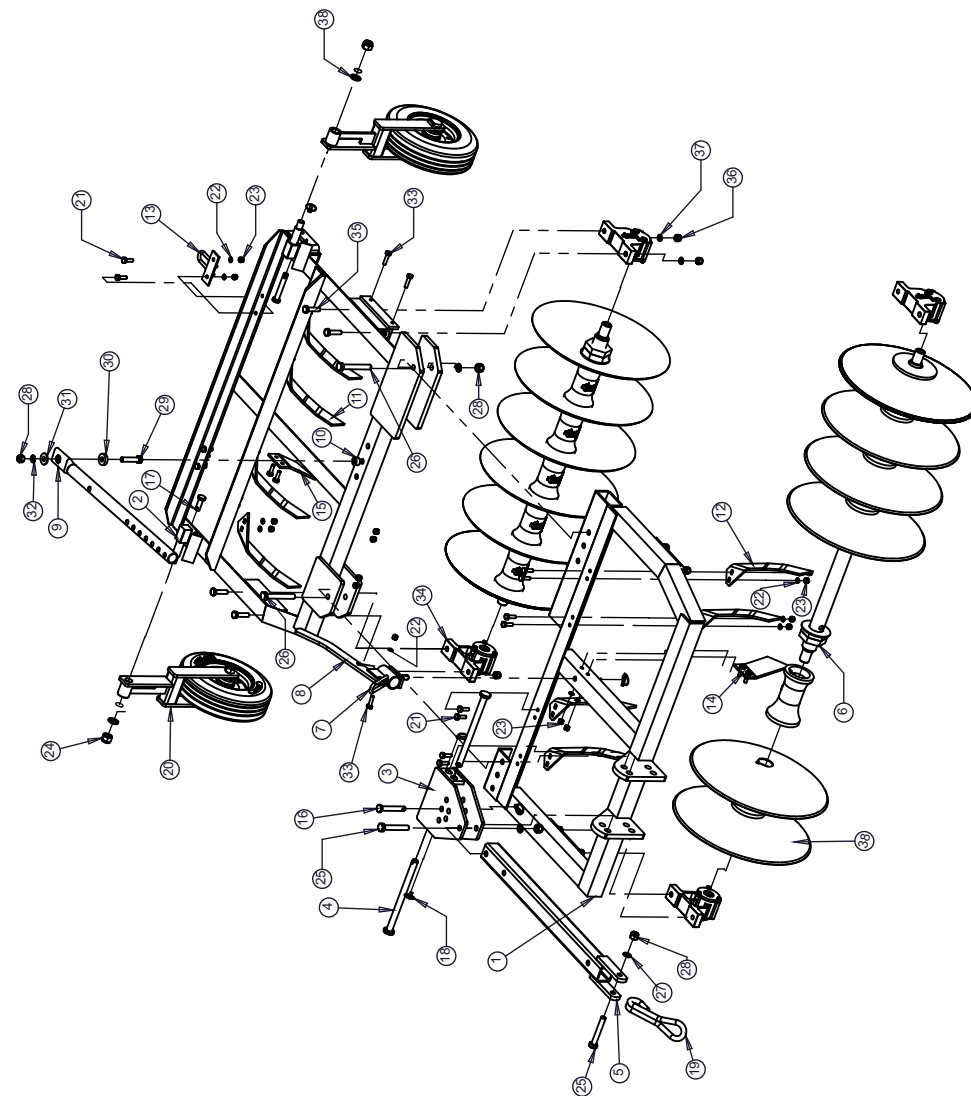
1. When transporting lift the harrow on tyres.
2. Set hydraulic levers in top raised position and lock levers.
3. Maintain the speed to avoid jumps.
4. Watch while over taking on road.
5. Always use SMV (Slow Moving Vehicles) symbols.



Dear user!
Respect the Ecology.
Do not throw the trash away.
This gesture helps to protect our Environment.

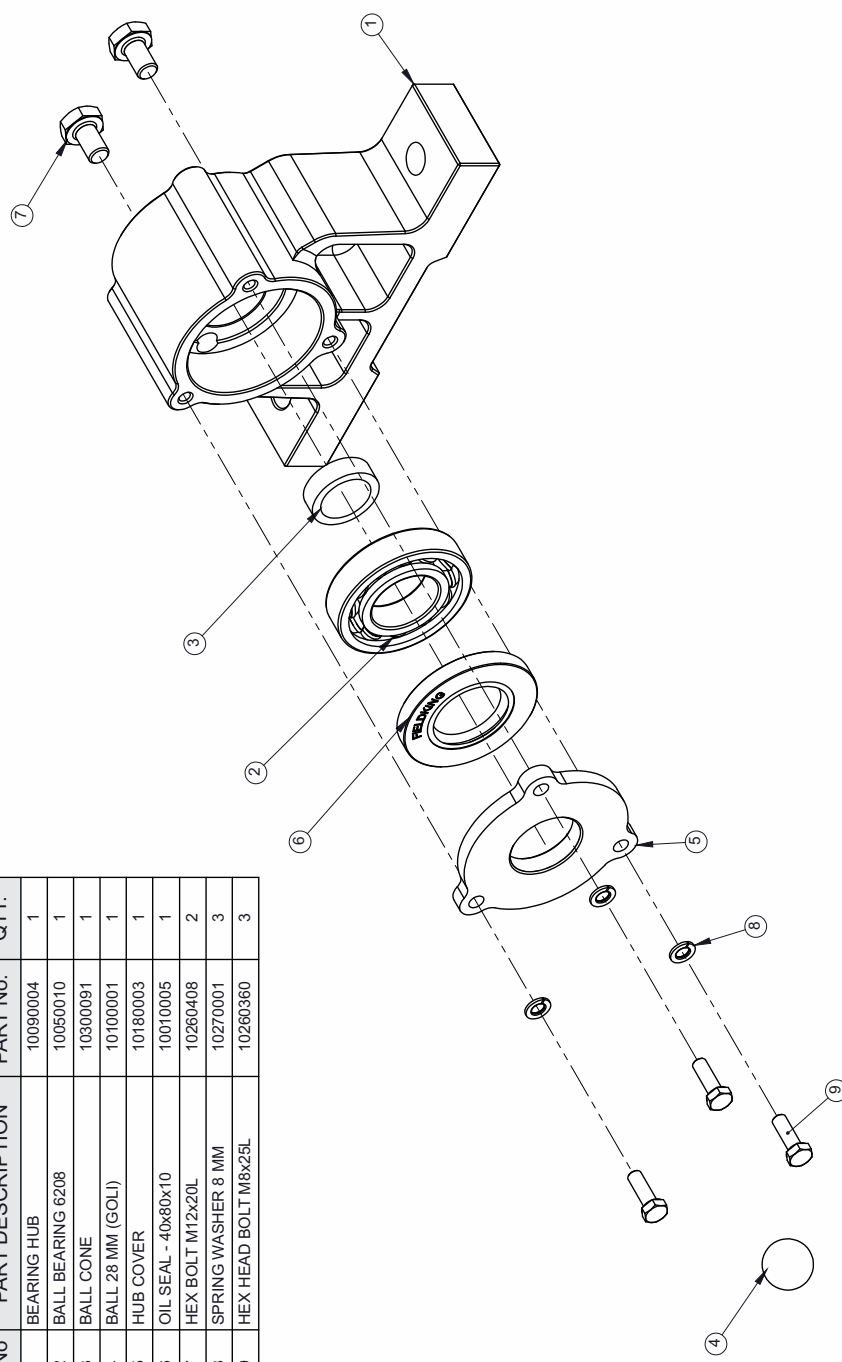
5. TROUBLE SHOOTING CHART

SR. NO.	POSSIBLE CAUSES	POSSIBLE REMEDIES
A. Side Draft		
1.	Disc not running level	Adjust using leveling lever
2.	Gangs improperly angled	Set the gangs
3.	Too much left hand offset.	By adjusting the drawbar plate bolt
B. Excessive field slippage		
1.	Tractor overloaded	Reduce angle
2.	Not enough tractor ballast	Add wheel weight or liquid
C. Not filling the furrow		
1.	Too much left hand offset	By adjusting the drawbar
2.	Tractor wheel running in furrow enlarging it	Drive the tractor in un worked ground enlarging it
3.	Disc too far from furrow	Keep the left front discs in furrow
4.	Rear gang set wrong, laterally.	By adjustment of gang box angle
D. Poor penetration		
1.	Hard ground	Increase angle between front and rear gang.
E. Disc unsteady		
1.	Too much angle in gang	Reduce the gang angle
F. Gang clogging		
1.	Field too wet.	Disc at shallow depth for first pass to speed up drying process.
2.	Gang set in maximum angle.	Reduce the angle
3.	Not using scrapers	Install scrapers.
4.	Scrapers worn out or not set properly.	Replace worn ones. Adjust scrapers close to the disc
5.	Disc is too deep in damp soil	Reduce penetration



Sr. No.	PART DESCRIPTION VARIANT	6x6		7x7		8x8		9x9		QTY.			
		WITH / WITHOUT TYRE PIPE	SOLID BAR	WITH / WITHOUT TYRE PIPE	SOLID BAR	WITH / WITHOUT TYRE PIPE	SOLID BAR	WITH / WITHOUT TYRE PIPE	SOLID BAR	6x6	7x7	8x8	9x9
1	TYRE OPTION AXLE TYPE												
2	FRONT FRAME ASS.	70960006		70940006		70890010		70960006		1	1	1	1
3	REAR FRAME ASS.	72240001		72250001		72260001		72270001		1	1	1	1
4	DRAWBAR BOX ASS.			71010002						1	1	1	1
5	DRAWBAR JOINT PIN			10020021						2	2	2	2
6	DRAWBAR HITCH PIPE ASS.			70930006						1	1	1	1
7	DRAWBAR HITCH PIPE ASS.	71030006		71020003		70990001		70990002		2	2	2	2
8	ADJUSTMENT HOLDER ASS.			70920005						1	1	1	1
9	HANDLE ASS.			76480001						1	1	1	1
10	ADJUSTMENT PIPE ASS.			76490001						1	1	1	1
11	ADJUSTMENT ROD BUSH.			10070033						1	1	1	1
12	SCRAPER REAR			72240016						4	5	6	7
13	SCRAPER FRONT			70980012						4	5	6	7
14	REAR U-CLAMP ASS.			72300001						2	2	2	2
15	FRONT SCRAPER STRIP SMALL			70980013						1	1	1	1
16	REAR SCRAPER STRIP SMALL			FKTODH-067						1	1	1	1
17	PIN 19x125L			10020009 (ONE QTY. FOR TYRE OPTION ONLY)						2	2	2	2
18	PIN 19x65L			10020034 (WITH TYRE OPTION ONLY)						1	1	1	1
19	LINCH PIN 10MM			10020022						6	6	6	6
20	HOOK			72320001						1	1	1	1
21	TYRE HOLDING ASSEMBLY			FKTODHT-503 (WITH TYRE OPTION ONLY)						2	2	2	2
22	HEX HEAD BOLT M12x35x1.75L			10260006						25	29	33	37
23	SPRING WASHER 12MM			10270003						25	29	33	37
24	NYLOCK NUT M12x1.75P			10280025						25	29	33	37
25	NYLOCK NUT M24x3P			10280075 (WITH TYRE OPTION ONLY)						2	2	2	2
26	HEX HEAD BOLT M20x130x2.5P			10260398						2	2	2	2
27	HEX HEAD BOLT M20x150x2.5P			10260397						2	2	2	2
28	SPRING WASHER 20MM			10270016						5	5	5	5
29	NYLOCK NUT M20x2.5P			10280021						5	5	5	5
30	HEX HEAD BOLT M18x75x2.5P			10260375						1	1	1	1
31	PACKING WASHER			10270026						1	1	1	1
32	SPRING WASHER 20MM			10270016						4	4	4	4
33	SPRING WASHER 18MM			10270006						1	1	1	1
34	HEX HEAD BOLT M12x50x1.75P			10260009						9	9	9	9
35	BEARING HUB ASSY.			72310001						4	4	4	4
36	HEX HEAD BOLT 16x65x2P			10260079						8	8	8	8
37	NYLOCK NUT M16x2P			10280005						8	8	8	8
38	SPRING WASHER 16MM			10270005						8	8	8	8

Sr.No	PART DESCRIPTION	PART No.	QTY.
1	BEARING HUB	10090004	1
2	BALL BEARING 6208	10050010	1
3	BALL CONE	10300091	1
4	BALL 28 MM (GOLI)	10100001	1
5	HUB COVER	10180003	1
6	OIL SEAL - 40x80x10	10010005	1
7	HEX BOLT M12x20L	10260408	2
8	SPRING WASHER 8 MM	10270001	3
9	HEX HEAD BOLT M8x25L	10260360	3



DELIVERY CHECKLIST

Dealer Pre-Delivery (Please Tick)	Please Complete all Dealer information Below
<p>1. Dealer Pre-Delivery Checklist</p> <ol style="list-style-type: none"> 1. The customer or person responsible has been given the operator's manual. 2. The customer undertakes to read the complete operator's manual and understands all aspects of the manual before operation of the machine. 3. All safety, operational and maintenance information have been explained and demonstrated. 4. All greasing and oil points, stickers, guarding and ID plate have been identified and physically pointed out. 5. The customer agrees that it is his responsibility to read and carry out the safety, maintenance and operation as per this operator's manual. 	<p>Dealer Information</p> <p>Dealer's Name.....</p> <p>Address.....</p> <p>State..... Postcode.....</p> <p>Phone..... Fax.....</p> <p>Email.....</p> <p>Service Person.....</p> <p>I confirm that the pre-delivery service was performed on this machine.</p> <p>Signature.....</p> <p>Date.....</p> <p>Comments.....</p>
Customer Delivery (Please Tick)	Please Complete all Customer Information Below
<p>2. Customer Delivery Checklist</p> <ol style="list-style-type: none"> 1. The customer or person responsible has been given the operator's manual. 2. The customer undertakes to read the complete operator's manual and understands all aspects of the manual before operation of the machine. 3. All safety, operational and maintenance information have been explained and demonstrated. 4. All greasing and oil points, stickers, guarding and ID plate have been identified and physically pointed out. 5. The customer agrees that it is his responsibility to read and carry out the safety, maintenance and operation as per this operator's manual. 	<p>Customer Information</p> <p>Customer's Name.....</p> <p>Address.....</p> <p>State..... Postcode.....</p> <p>Phone..... Fax.....</p> <p>Email.....</p> <p>Delivery Person.....</p> <p>I confirm that all of the delivery checks were explained and performed.</p> <p>Signature.....</p> <p>Delivery Date.....</p> <p>Comments.....</p>

FIELDKING

WARRANTY CARD Customer Copy

CUSTOMER NAME Mr./ Mrs :	
ADDRESS :	
MOBILE NO. :	
Email :	
NAME OF IMPLEMENT :	
MODEL NO. :	
YEAR OF Mfg. :	
SERIAL NO. :	
REGISTRATION NO. :	
DATE OF PURCHASING :	
NAME OF DEALER :	

Customer's Signature

Dealer's Signature



Corporate Office : Plot No. 235-236 & 238-240, Sec-3, HSIIDC,
Karnal- 132001 (Haryana), India ☎ +91-184-2221571/ 72/ 73
✉ marketing@fieldking.com, exports@fieldking.com, 🌐 www.fieldking.com

FIELDKING

WARRANTY CARD Company Copy

CUSTOMER NAME Mr./ Mrs :

ADDRESS :

MOBILE NO. :

Email :

NAME OF IMPLEMENT :

MODEL NO. :

YEAR OF Mfg. :

SERIAL NO. :

REGISTRATION NO. :

DATE OF PURCHASING :

NAME OF DEALER :

Customer's Signature

Dealer's Signature



Beri Udyog Pvt. Ltd.

Corporate Office : Plot No. 235-236 & 238-240, Sec-3, HSIIDC,
Karnal- 132001 (Haryana), India ☎ +91-184-2221571/ 72/ 73

✉ marketing@fieldking.com, exports@fieldking.com, 🌐 www.fieldking.com

FIELDKING

WARRANTY CARD

Dealer Copy

CUSTOMER NAME Mr./ Mrs :

ADDRESS :

MOBILE NO. :

Email :

NAME OF IMPLEMENT :

MODEL NO. :

YEAR OF Mfg. :

SERIAL NO. :

REGISTRATION NO. :

DATE OF PURCHASING :

NAME OF DEALER :

Customer's Signature

Dealer's Signature



Beri Udyog Pvt. Ltd.

Corporate Office : Plot No. 235-236 & 238-240, Sec-3, HSIIDC,
Karnal- 132001 (Haryana), India

☎ +91-184-2221571/ 72/ 73
✉ marketing@fieldking.com, exports@fieldking.com, 🌐 www.fieldking.com