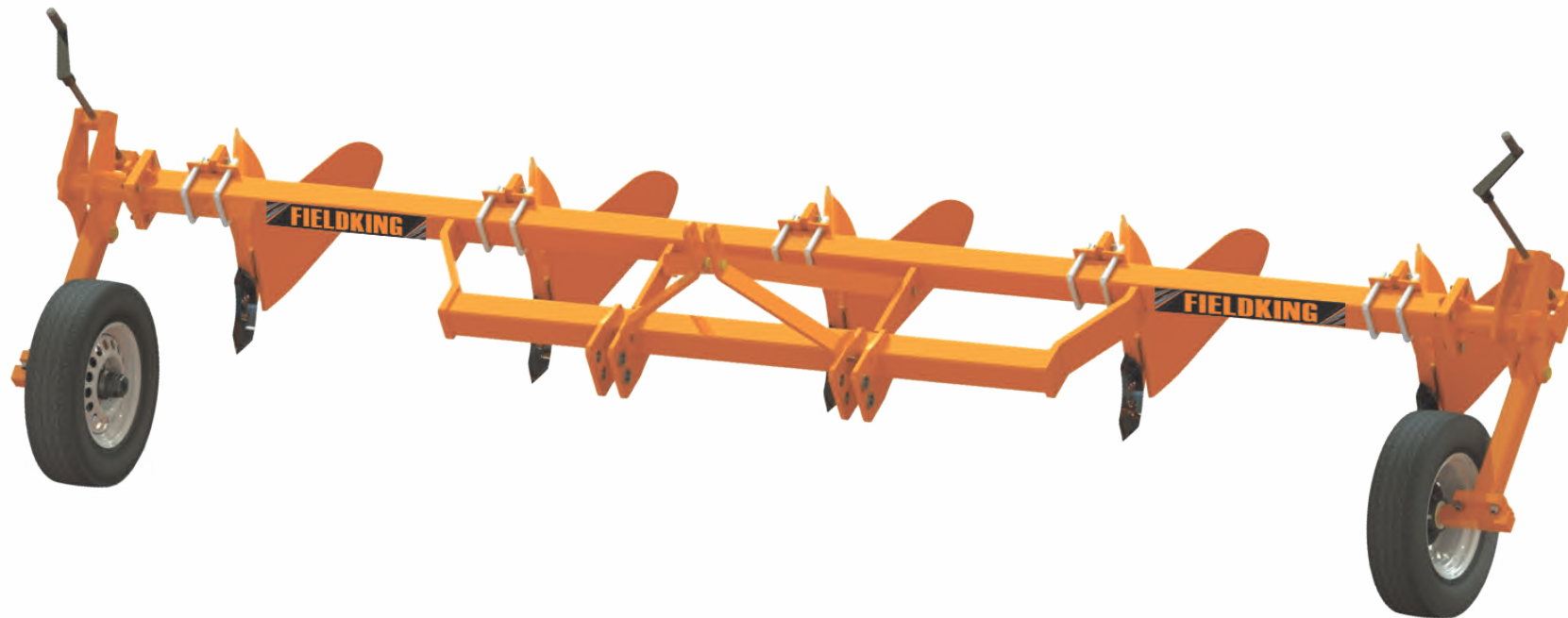


# FIELDKING

## Tyne Ridger



➤ [Operator Manual](#) ➤ [Service Manual](#) ➤ [Part Catalogue](#)

# CONGRATULATIONS!

You have invested in one of the best implements of its type in the market today.

The care you give your "FIELDKING" implement will greatly determine your satisfaction with its performance and its service life. A careful study of this manual will give you a thorough understanding of your new implement before operating.

If your manual is lost or destroyed, "FIELDKING" will be glad to provide you a new copy. Visit to nearest dealership & get a copy. Most of our manuals can also be downloaded from our website at [www.fieldking.com](http://www.fieldking.com).

As an authorized "FIELDKING" dealer, we stock genuine "FIELDKING" parts which are manufactured with the same precision and skill as our original equipment. Our trained service persons are well informed on methods required to service "FIELDKING" equipments and are ready to help you.

Should you require additional information or assistance, please contact us.

YOUR AUTHORIZED

FIELDKING DEALER

BECAUSE "FIELDKING" MAINTAINS AN ONGOING PROGRAMME OF PRODUCT IMPROVEMENT, WE RESERVE THE RIGHT TO MAKE IMPROVEMENTS IN DESIGN OR CHANGE IN SPECIFICATION WITHOUT INCURRING ANY OBLIGATION TO INSTALL THEM ON UNITS PREVIOUSLY SOLD. BECAUSE OF THE POSSIBILITY THAT SOME PHOTOGRAPHS IN THIS MANUAL WERE TAKEN OF PROTOTYPE MODELS, PRODUCTION MODELS MAY VARY IN SOME DETAIL. IN ADDITION, SOME PHOTOGRAPHS MAY SHOW SHIELDS REMOVED FOR THE PURPOSE OF CLARITY. NEVER OPERATE THIS IMPLEMENT WITHOUT ALL SHIELDS IN PLACE.

# TO THE PURCHASER

This manual contains valuable information about your new "FIELDKING" tyne ridger. It has been carefully prepared to give you helpful suggestions for operating, adjusting, servicing and ordering spare parts.

Keep this manual in a convenient place for quick and easy reference. Study it carefully. You have purchased a dependable and sturdy tyne ridger but only by proper care and operation you can expect to receive the service and long life designed and built into it.

Sometime in the future your tyne ridger may need new parts to replace which are worn out or broken. If so, go to your dealer and provide him equipment's detail like model and part number.

## CUSTOMER INFORMATION

Name \_\_\_\_\_

Purchased From \_\_\_\_\_

Date of Purchase \_\_\_\_\_

Model No. \_\_\_\_\_

Serial No. \_\_\_\_\_

# INDEX

## **1. TECHNICAL DATA**

- 1.1 Introduction
- 1.2 Warranty
- 1.3 When the warranty becomes void
- 1.4 Warning

## **2. USAGE INSTRUCTIONS**

- 2.1 Before use & adjustments
- 2.2 Attaching ridger to the tractor
- 2.3 Warning for driver
- 2.4 Safety

## **3. MAINTENANCE**

- 3.1 Maintenance Instructions
- 3.2 Storage of machine after work
- 3.3 Lubrication

## **4. INSTRUCTION FOR DRIVER**

## **5. FIGURES AND PART CODE NO. FOR TRACTOR OPERATOR/DRIVER**

## 1. TECHNICAL DATA

### 1.1 INTRODUCTION

This handbook contains the use and maintenance instructions with a list of the spare parts of the mounted tyne ridger.

This tyne ridger is equipped with heavy-duty box frame specially designed for making bunds of different Size and depth. Mostly used for plantation of sugar cane, potato and vegetable cropping.

Regular and satisfactory operation together with economic and long lasting use of the implement depends on the compliance with instructions given in this handbook.

Compliance with the instructions in this handbook is also important since manufacturer declines all and every responsibility for damage to persons or property caused by negligence and failure to comply with these instructions.

### 1.2 WARRANTY

When the implement is delivered, check that it has not been subjected to damage during transport and that the accessories are in a perfect condition and complete.

Any claims following the receipt of damaged goods shall be presented in writing within 8 days from the receipt of the goods.

The purchaser may only make the claims under warranty. When he has complied with the warranty conditions in the supply contract.

### 1.3 WHEN THE WARRANTY BECOMES VOID

Besides the cases specified in the supply agreement, the guarantee shall in any case become void.

1. When the implement has been used beyond the specified power limit like (Tractor Horse Power)
2. When repairs made by the customer without authorization from the manufacturer or owing to installation of spurious spare parts, the machine is subjected to variations and the damage can be ascribed to these variations.
3. When the user has failed to comply with the instructions in this handbook.
4. No warranty will be given if the service and greasing is not done on time.

### 1.4 WARNING

1. Thoroughly read the instruction manual before proceeding with the various operations.
2. Maintain the tyne ridger as per the instructions of this handbook to be entitled for warranty.

## 2. USAGE INSTRUCTIONS

### 2.1 BEFORE USE & ADJUSTMENT

Before mounting of tyne ridger make sure that all nuts & bolts are properly secured. Also determine soil and trash conditions of the field and make the preliminary adjustments. e.g.

#### Tyne leveling

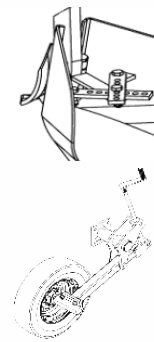
To eliminate uneven working and side draft, leveling is done by means of top link.

#### Furrow adjustment

The furrow can be adjusted by loosening the adjustment bolts to get the desire working width of ridge clamp.

#### Depth control

The depth at which the implement is required to work is controlled hydraulically by raising or lowering the control lever on the tractor/by optional tyre.



### 2.2 ATTACHING THE RIDGER TO THE TRACTOR

1. Place the ridger duly leveled on the flat piece of land.
2. Reverse the tractor to the ridger ( Do not drag the ridger up the tractor)
3. Attach the left arm of the tractor to the ridger first.
4. Attach the central arm to the ridger. To attach, turn the screws on both sides to an equal length. If the arm is too short or too long, turn the screw to adjust both at the same time until aligned with the hole on the central arm.
5. Attach the lower right arm if the gap between the hole and mounting pin is too close or too distant, turn the control arm in or pull it away to an appropriate distance. You may have to adjust both height and distance at the same time. When the hole at tractor arm and mounting pin are even, insert the pin in the hole and lock it with the lynch pin.
6. After attaching the ridger, lift it and adjust the control arm parallel to the ground. When you look from both rear or sideways, the tyne should all be touching the ground uniformly.

### 2.3 WARNING FOR THE DRIVER

1. Before you start working, Please check all nuts & bolts of the tyne ridger.
2. Be vigilant about the tree roots and stones. Don't work on stony soil.
3. Tractor should be in first high or fourth low gear.
4. Don't allow anyone to come across the ridger.
5. Lift the tyne ridger on every turn.

## 2.4 SAFETY

Understanding the machine safety labels



**Safety-Alert Symbol**

The machine safety labels shown in this section are placed in important areas on your machine to draw attention to potential safety hazards

On your machine the words DANGER, WARNING, and CAUTION are used with this safety-alert symbol. DANGER identifies the most serious hazards.

The operator's manual also explains any potential safety hazards whenever necessary.



**In order to protect yourself always wear adequate clothes and shoes during the operations.**



**Never allow riders on the tractor or implement unless an additional seat is available.**



**Be careful when moving around steep gradient to avoid sharp turn.**



**Never transport the implement on rough roads during the night. When operating, avoid sharp turns that may cause tractor colliding with the implement.**

## 3. MAINTENANCE

### 3.1 MAINTENANCE INSTRUCTIONS

If you work with the tyne ridger on stony land, maintenance also increases. Please follow these rules to get the best results.

1. If tyne ridger is new after initial working of first two hours, tighten all nuts & bolts.
2. After every fifty hours and tighten all nuts & bolts. After every fifty hours, open the bearing hub of tyne ridger & cleanse with diesel oil & pump in new grease.

### 3.2 STORAGE OF MACHINE AFTER WORK

1. Wash the tyne ridger after work.
2. Replace the worn out nuts & bolts.
3. If tyne ridger has to remain unused for long time then clean it & apply a layer of used oil for rust prevention.
4. These steps will enhance the life of your tyne ridger.

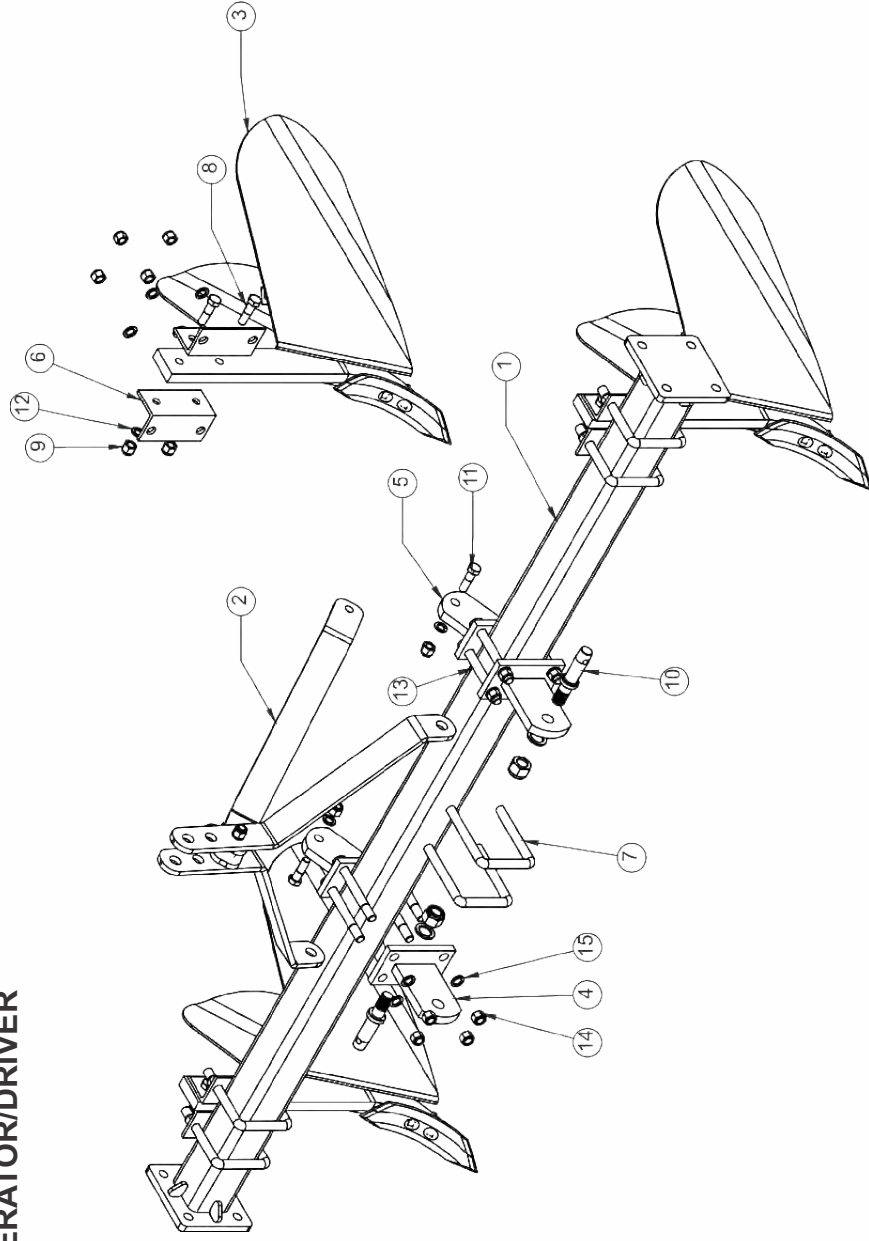
### 3.3 LUBRICATION

To grease both tyre hub every week.

## 4. INSTRUCTIONS FOR DRIVER

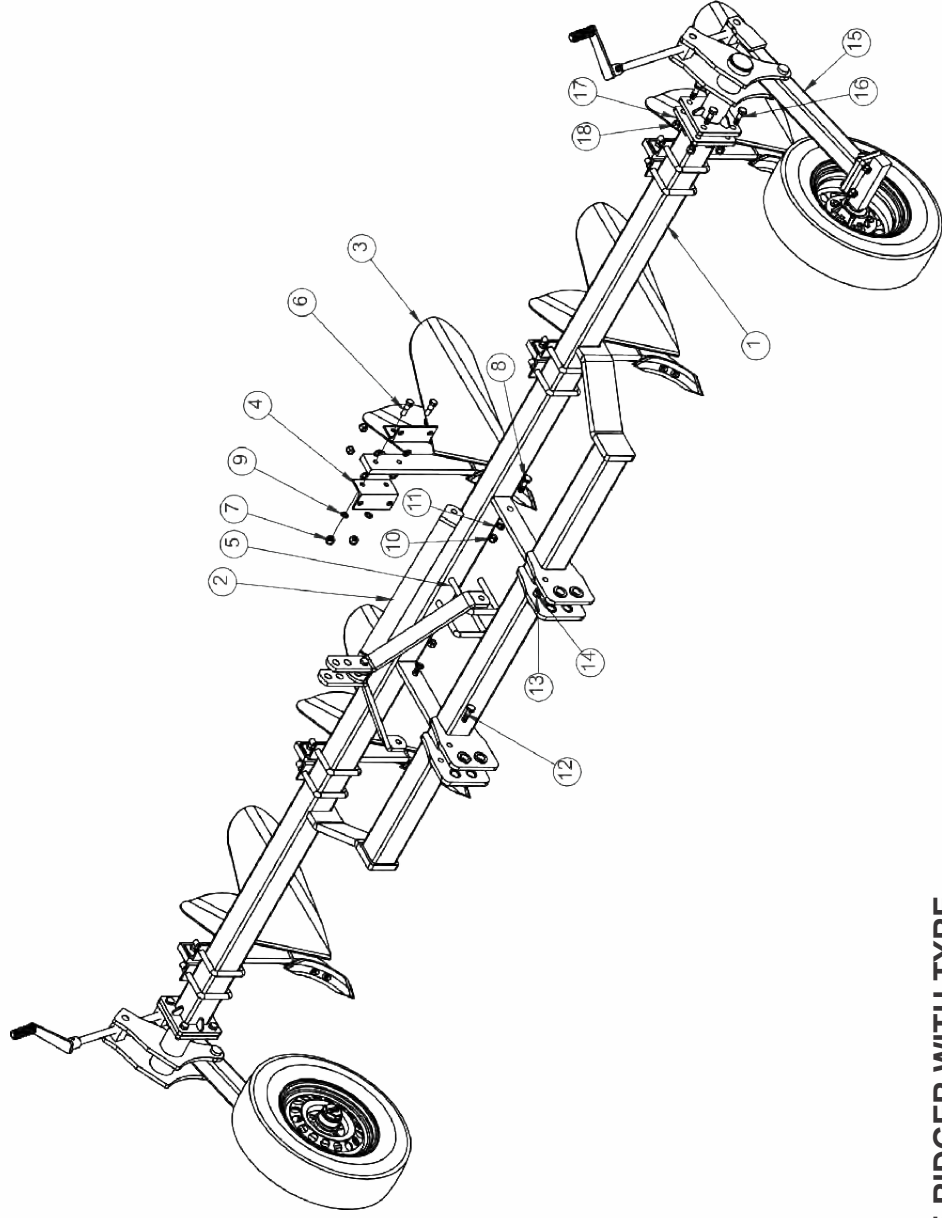
1. When tyne ridger is ready for use don't stand between tyne ridger & the tractor.
2. Properly fit the three point linkage as mentioned above & lock with Lynch pin.
3. In case of scrapper touching the tyne, loosen the scrapper bolt and readjust the scrapper.
4. Never turn the tractor to the right or left when the ridger is engaged in the soil.
5. Never reverse the tractor when the ridger is engaged in the soil.
6. To get good results from the ridger, shovel should be replaced when its length is reduced by 2" from its original size.

5. FIGURES AND CODE NO. FOR TRACTOR OPERATOR/DRIVER



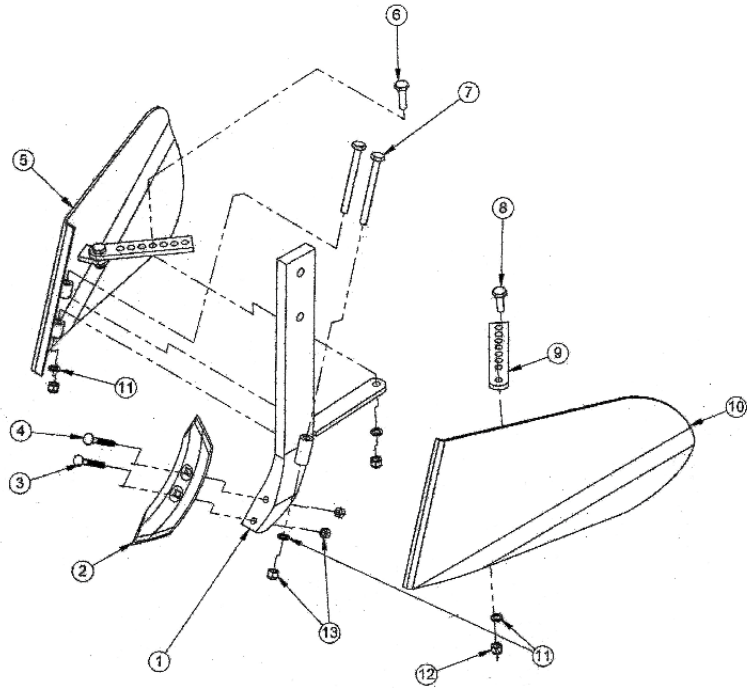
TYNE RIDGER

SR. NO.	DESCRIPTION	PART NO.				Quantity			
		2-BOTTOM	3-BOTTOM	4-BOTTOM	75020001	2-BOTTOM	3-BOTTOM	4-BOTTOM	4-BOTTOM
1	FRAME PIPE ASSY.	76230001	76130001	75020001	75020001				1
2	3 POINT LINKAGE ASSEMBLY (TYNE RIDGER)		75040004						1
3	FURROW & TYNE ASSEMBLY (TYNE RIDGER)		75030003			2		3	4
4	FRONT LINK ASSY.		76100001						2
5	REAR LINK ASSY. (TYNE RIDGER)		76110001						2
6	TYNE SUPPORT ANGLE (90X8X190 L)		75010008			4		6	8
7	U-CLAMP 19X175X120.5MM		10220009			4		6	8
8	HEX HEAD BOLT 16X65X2MM (8.8 GRADE) HALF THREAD		10260378			4		6	8
9	NYLOCK NUT M16X2MM		10280005			5		7	9
10	HITCH PIN 36X167MM		10020024						2
11	HEX HEAD BOLT M16X55X2MM (10.9 GRADE)		10260204						2
12	SPRING WASHER 16MM		10270005			5		7	9
13	HEX HEAD BOLT M18X160X2.5MM (8.8 GRADE)		10260402						8
14	NYLOCK NUT M18X2.5MM		10280020						8
15	SPRING WASHER 18MM		10270006						8

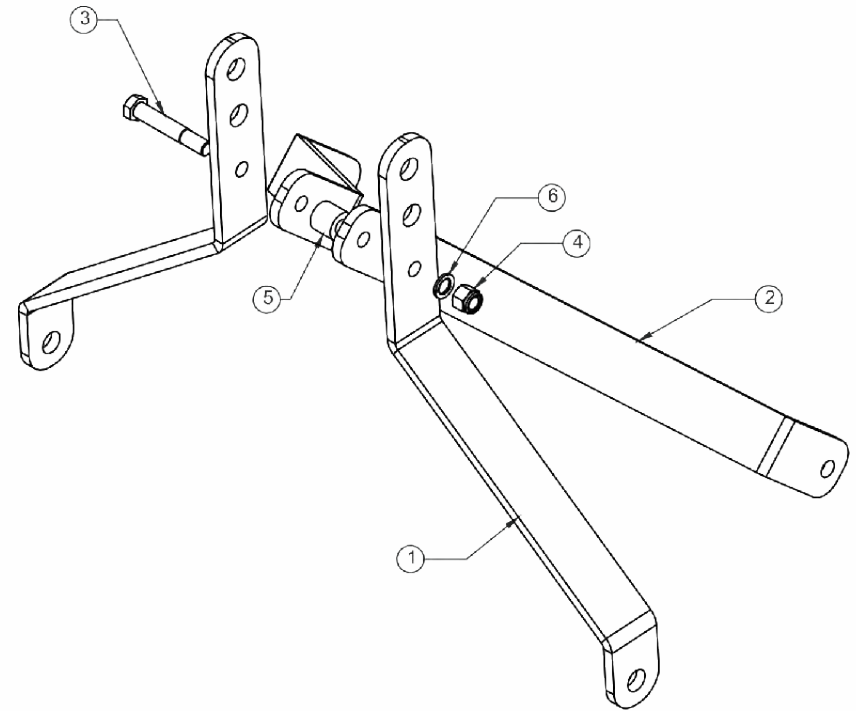


**TYNE RIDGER WITH TYRE**

5 BOTTOM TYNE RIDGER WITH TYRE			
SR.NO.	DESCRIPTION	PART NO.	Qty
1	FRAME ASSY. (5 BOTTOM TYNE RIDGER)	79390001	1
2	3 POINT LINKAGE ASSY. (5 BOTTOM TYNE RIDGER)	79400001	1
3	FURROW & TYNE ASSEMBLY (TYNE RIDGER)	75030003	5
4	TYNE SUPPORT ANGLE (90X8X190 L)	75010008	10
5	U-CLAMP 19X175X120.5MM	10220009	10
6	HEX HEAD BOLT 16X65X2MM (8.8 GRADE) HALF THREAD	10260378	10
7	HEX HEAD BOLT 16X65X2MM (10.9 GRADE)	10260017	10
8	HEX HEAD BOLT M20X60X2.5P	10260320	10
9	SPRING WASHER 16MM	10270005	2
10	NYLOCK NUT M20X2.5MM	10280021	10
11	SPRING WASHER 20MM	10270016	2
12	HEX HEAD BOLT M18X60X1.5 (P)	10260082	2
13	NYLOCK NUT M18X1.5MM	10280006	2
14	SPRING WASHER 18MM	10270006	2
15	COMPLETE TYRE ATTACHMENT ASSEMBLY (TYNE RIDGER WITH TYRE)	77000016	2
16	HEX HEAD BOLT M16X55X2MM (10.9 GRADE)	10260204	8
17	NYLOCK NUT M16X2MM	10280005	8
18	SPRING WASHER 16MM	10270005	8

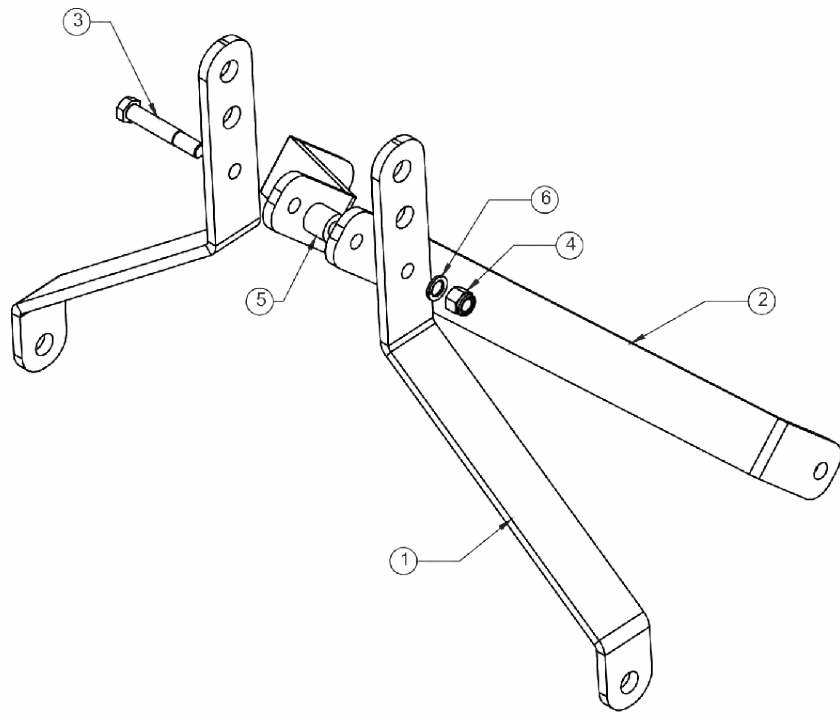


FURROW ASSEMBLY			
SR.NO.	PART NAME	PARTNO.	QTY
1	TYNE ASSY. (TYNE RIDGER)	76140001	1
2	SHOVEL 280MM (L), 10MM (T), 70MM (W) (2HOLE)	10320005	1
3	ROUND HEAD BOLT 7/16X3 INCH	10260123	1
4	ROUND HEAD BOLT 7/16X3.5 INCH	10260224	1
5	FURROW SHEET ASSEMBLY-L.H.S ( TYNE RIDGER)	75030004	1
6	HEX HEAD BOLT M12X45X1.75MM (10.9 GRADE)	10260129	1
7	HEX HEAD BOLT 7/16X120X1.25MM (10.9 GRADE)	10260299	2
8	HEX HEAD BOLT M12X40X1.75MM (10.9 GRADE) (HALF THREAD)	10260008	2
9	TYNE BUSH (25X12.5X50 L)	10070071	2
10	FURROW SHEET ASSEMBLY-R.H.S (TYNE RIDGER)	75030005	1
11	SPRING WASHER 12MM	10270003	5
12	NYLOCK NUT M12X1.5(P)	10280003	3
13	PLAIN NUT 7/16 UNF	10280022	4

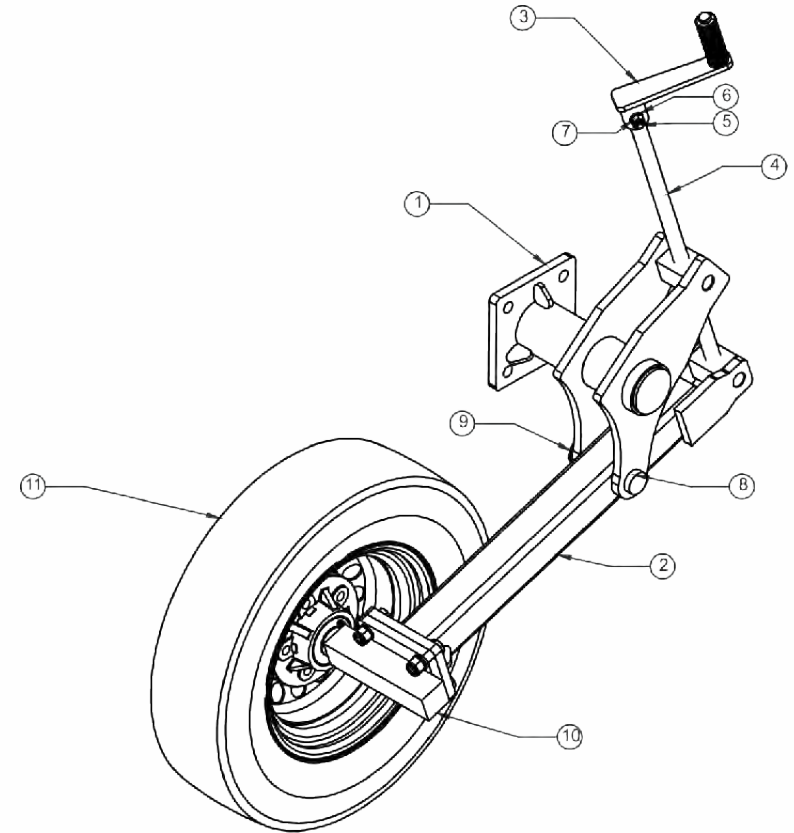


3 POINT LINKAGE ASSEMBLY (3 & 4 BOTTOM)			
SR. NO.	PART NAME	PART NO.	QTY
1	FRONT LEVER (TYNE RIDGER)	75040002	2
2	REAR LEVER (TYNE RIDGER)	75040003	2
3	HEX HEAD BOLT M16X110X2MM (8.8 GRADE) HALF THREAD	10260366	1
4	NYLOCK NUT M16X2MM	10280005	2
5	LEVER BUSH 17X32X29 MM (L)	10070005	1
6	SPRING WASHER 16MM	10270005	1



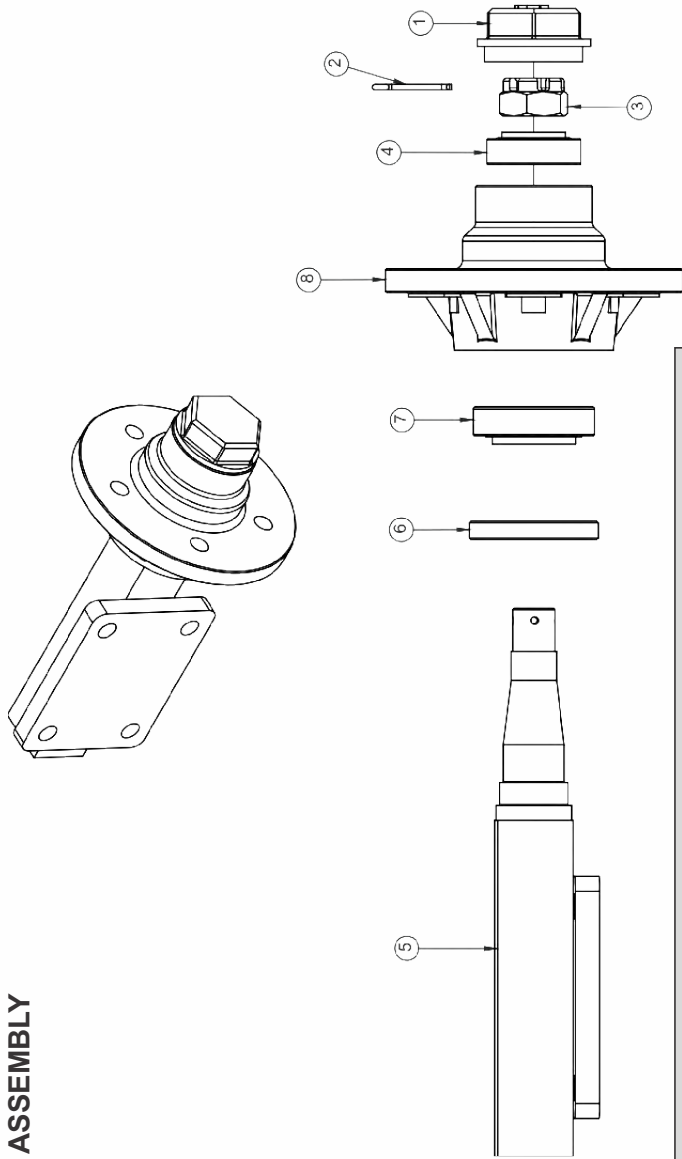


3 POINT LINKAGE ASSEMBLY (5 BOTTOM)			
SR. NO.	PART NAME	PART NO.	QTY
1	FRONT LEVER (5BOTTOM TYNE RIDGER)	79400002	2
2	REAR LEVER (5BOTTOM TYNE RIDGER)	79400003	2
3	HEX HEAD BOLT M18X110X2.5MM (10.9 GRADE)	10260318	1
4	NYLOCK NUT M18X2.5MM	10280020	1
5	LEVER BUSH 17X32X29 MM (L)	10070005	1
6	SPRING WASHER 18MM	10270006	1



COMPLETE TYRE ATTACHMENT ASSEMBLY			
SR. NO.	PART NAME	PART NO.	QTY
1	TYNE ASSY. (TYNE RIDGER)	76140001	1
2	LOWER MOUNTING PIPE ASSY. (TYNE RIDGER WITH TYRE)	77000005	1
3	ADJUSTING ROD HANDLE ASSY. (TYNE RIDGER WITH TYRE)	77000024	1
4	ADJUSTING ROD (TYNE RIDGER WITH TYRE)	77000020	1
5	HEX HEAD BOLT 12X60X1.75MM (8.8 GRADE) HALF THREAD	10260356	1
6	SPRING WASHER 12MM	10270003	1
7	NYLOCK NUT M12X1.75 (P)	10280025	1
8	PIN 25X130MM	10020036	1
9	LINCH PIN 10MM	10020022	1
10	COMPLETE HUB ASSEMBLY (TYNE RIDGER WITH TYRE)	77000002	1
11	TYRE ASSEMBLY (TYNE RIDGER WITH TYRE)	77000001	1

# HUB ASSEMBLY



HUB ASSEMBLY			
SR. NO.	PART NAME	PART NO.	QTY
1	TYRE HUB COVER 75MM OD, 35MM (W) (FKLLL)	10180008	1
2	SPLIT PIN 4MMX65MM (L)	10020055	1
3	CASTLE NUT 28X12G, 20MM (T) (BSW)	10280015	1
4	BEARING 32206	10050017	1
5	SHAFT & MOUNTING PLATE ASSEMBLY, (TYNE RIDGER WITH TYRE)	77000025	1
6	OIL SEAL 45X85X12	10010038	1
7	BEARING 32208	10050021	1
8	HUB (TYNE RIDGER WITH TYRE)	77000006	1

# DELIVERY CHECKLIST

Dealer Pre-Delivery (Please Tick)
<p><b>1. Dealer Pre-Delivery Checklist</b></p> <ol style="list-style-type: none"> <li>The customer or person responsible has been given the operator's manual.</li> <li>The customer undertakes to read the complete operator's manual and understands all aspects of the manual before operation of the machine.</li> <li>All safety, operational and maintenance information have been explained and demonstrated.</li> <li>All greasing and oil points, stickers, guarding and ID plate have been identified and physically pointed out.</li> <li>The customer agrees that it is his responsibility to read and carry out the safety, maintenance and operation as per this operator's manual.</li> </ol>
Customer Delivery (Please Tick)
<p><b>2. Customer Delivery Checklist</b></p> <ol style="list-style-type: none"> <li>The customer or person responsible has been given the operator's manual.</li> <li>The customer undertakes to read the complete operator's manual and understands all aspects of the manual before operation of the machine.</li> <li>All safety, operational and maintenance information have been explained and demonstrated.</li> <li>All greasing and oil points, stickers, guarding and ID plate have been identified and physically pointed out.</li> <li>The customer agrees that it is his responsibility to read and carry out the safety, maintenance and operation as per this operator's manual.</li> </ol>

Please Complete all Dealer information Below
<p><b>Dealer Information</b></p> <p>Dealer's Name.....</p> <p>Address.....</p> <p>State..... Postcode.....</p> <p>Phone..... Fax.....</p> <p>Email.....</p> <p>Service Person.....</p> <p>I confirm that the pre-delivery service was performed on this machine.</p> <p>Signature.....</p> <p>Date.....</p> <p>Comments.....</p>
Please Complete all Customer Information Below
<p><b>Customer Information</b></p> <p>Customer's Name.....</p> <p>Address.....</p> <p>State..... Postcode.....</p> <p>Phone..... Fax.....</p> <p>Email.....</p> <p>Delivery Person.....</p> <p>I confirm that all of the delivery checks were explained and performed.</p> <p>Signature.....</p> <p>Delivery Date.....</p> <p>Comments.....</p>

# FIELDKING

## WARRANTY CARD Customer Copy

CUSTOMER NAME Mr./ Mrs :

ADDRESS :

MOBILE NO. :

Email :

NAME OF IMPLEMENT :

MODEL NO. :

YEAR OF Mfg. :

SERIAL NO. :

REGISTRATION NO. :

DATE OF PURCHASING :

NAME OF DEALER :

Customer's Signature

Dealer's Signature



**Beri Udyog Pvt. Ltd.**

Corporate Office : Plot No. 235-236 & 238-240, Sec-3, HSIIDC,  
Karnal- 132001 (Haryana), India ☎ +91-184-2221571/ 72/ 73

✉ marketing@fieldking.com, exports@fieldking.com, 🌐 www.fieldking.com

# FIELDKING

## WARRANTY CARD Company Copy

CUSTOMER NAME Mr./ Mrs :

ADDRESS :

MOBILE NO. :

Email :

NAME OF IMPLEMENT :

MODEL NO. :

YEAR OF Mfg. :

SERIAL NO. :

REGISTRATION NO. :

DATE OF PURCHASING :

NAME OF DEALER :

Customer's Signature

Dealer's Signature



**Beri Udyog Pvt. Ltd.**

Corporate Office : Plot No. 235-236 & 238-240, Sec-3, HSIIDC,  
Karnal- 132001 (Haryana), India ☎ +91-184-2221571/ 72/ 73

✉ marketing@fieldking.com, exports@fieldking.com, 🌐 www.fieldking.com

# FIELDKING

## WARRANTY CARD

Dealer Copy

CUSTOMER NAME Mr./ Mrs :

ADDRESS :

MOBILE NO. :

Email :

NAME OF IMPLEMENT :

MODEL NO. :

YEAR OF Mfg. :

SERIAL NO. :

REGISTRATION NO. :

DATE OF PURCHASING :

NAME OF DEALER :

Customer's Signature

Dealer's Signature



**Beri Udyog Pvt. Ltd.**

Corporate Office : Plot No. 235-236 & 238-240, Sec-3, HSIIDC,  
Karnal- 132001 (Haryana), India

☎ +91-184-2221571/ 72/ 73  
✉ marketing@fieldking.com, exports@fieldking.com, 🌐 www.fieldking.com